

FREEPORT 3

Designed for Reliability, Efficiency and Performance

High Efficiency
Oil Fired, 3 Pass
Cast Iron, Water Boiler




- 87.0% AFUE
- 4 Physical Sizes with 5 firing rates (see back for details)
- 3 pass cast iron heat exchanger
- Beckett AFG burner standard, B20 Ready. Carlin burner optional.
- Burners packaged separately for easier handling
- Swing door for easy access through the front to all heating surfaces
- Return water mixing tube standard
- HydroLevel 3250 Control
 - Combination Aquastat & LWCO
 - Allows for additional circulator that can be used for second zone or indirect water heater like the Mega-Stor II
- Lifetime Limited Warranty

The Mega-Stor II indirect water heaters come in a variety of sizes from 30 to 119 gallons to meet a variety of residential and commercial needs.



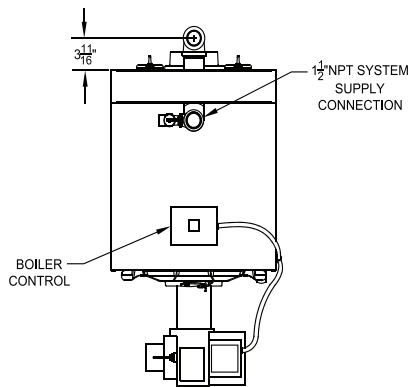
VelocityBoilerWorks.com | Philadelphia, PA

FWC SERIES – FREEPORT 3 TECHNICAL SPECIFICATIONS

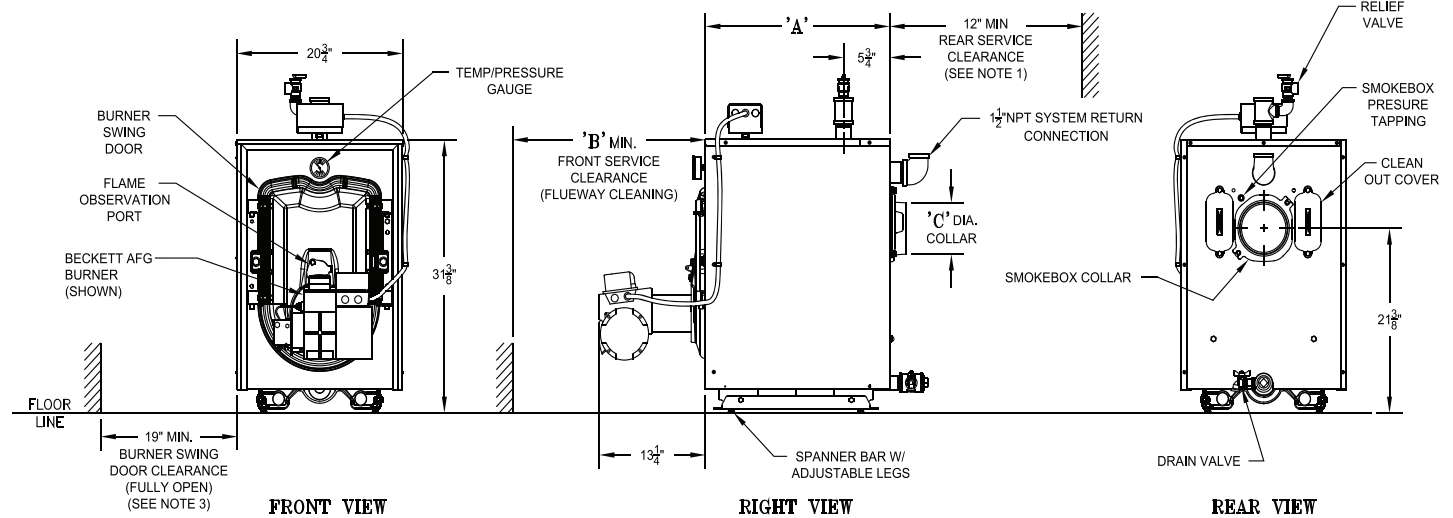
CROWN MODEL NUMBER	BURNER INPUT		HEATING CAPACITY (MBH)	AHRI NET RATING (MBH)	 AFUE %	DIMENSIONS (INCHES)			WATER CONTENT (GAL)	HEAT TRANSFER SURFACE AREA (SQ FT)	SHIPPING WEIGHT (LBS)
	GPH	MBH				"A"	"B"	"C"			
FWC-060	0.60	84	73	63	87.0	16-1/4	24	5	7.70	13.29	430
FWC-080	0.80	112	97	84	87.0	16-1/4	24	5	7.70	13.29	430
FWC-100	1.00	140	123	107	87.0*	22-1/4	24	6	11.08	20.29	545
FWC-130	1.30	182	160	139	87.0*	28-1/4	30	6	14.46	27.29	658
FWC-160	1.60	224	197	171	87.0*	34-1/4	36	7	17.84	34.29	771

***ENERGY STAR® certified product**

1. Burner capacity rating, GPH, is based on #2 fuel oil with a Gross Heating Value equal to 140,000 BTU/gal.
2. Net Ratings are based on piping and pick-up allowances of 1.15.
3. Maximum working pressure, water - 50 PSI.



TOP VIEW



FRONT VIEW

RIGHT VIEW

REAR VIEW

- NOTES:
1. THIS DIMENSION INCREASES AND IS CONTROLLED BY SMOKEPIPE ARRANGEMENT.
 2. DRAIN VALVE AND RELIEF VALVE/FITTINGS SHIPPED LOOSE.
 3. BOILER SHIPPED WITH STANDARD RIGHT HAND HINGE CONFIGURATION, BUT CAN BE CONVERTED TO LEFT HAND HINGE. APPLY CLEARANCE ACCORDINGLY.

