



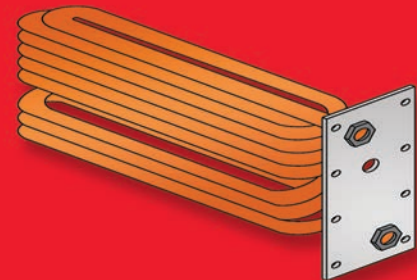
# KINGSTON

## Oil-Fired Steam Boiler

Designed for reliability, high efficiency and performance for residences with chimneys

### DOMESTIC HOT WATER OPTION

The Kingston's optional tankless coil feature eliminates the need for a separate water heater, making it ideal for installation in small spaces.

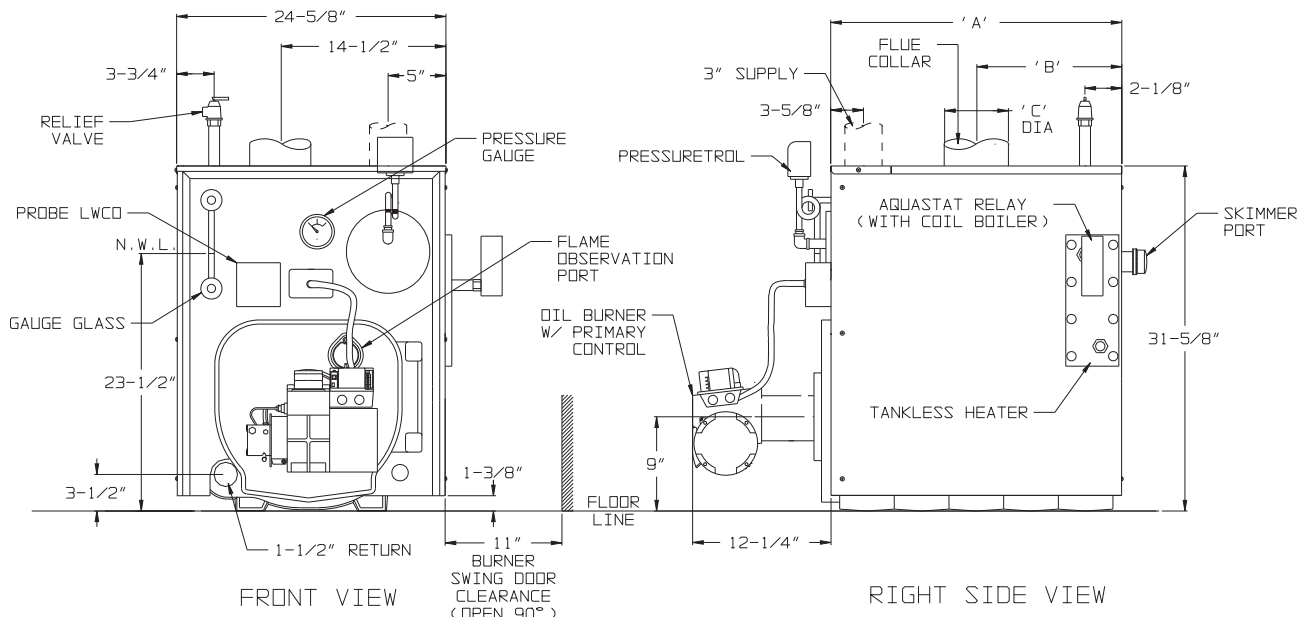


- Efficiencies up to 86.4%
- Rugged wet base, cast iron heat exchanger
- Cast iron swing door with burner disconnect for easy service
- Optional side-mounted tankless coil for domestic hot water production
- Beckett AFG burner standard: Carlin and Riello burners optional on most sizes
- Near boiler piping kit available separately for ease of installation

See backside for technical specifications

Quality  
Value &  
Service

# KSB SERIES - KINGSTON TECHNICAL SPECIFICATIONS



- Notes:
1. Dashed piping shown not furnished with boiler.
  2. Tankless heater opening not present on less tankless heater boilers.

KSB SPACE HEATING RATINGS						AHRI CERTIFIED® www.ahridirectory.org		DIMENSIONS			SHIPPING WEIGHT (LBS)
CROWN MODEL NUMBER	BURNER INPUT (GAL/HR)	HEATING CAPACITY (MBH)	AHRI NET RATING STEAM		AFUE (%)	NO. OF SECS.	TANKLESS HEATER (GPM)	"A"	"B"	"C"	
			(Sq. Ft.)	(MBH)				(in.)	(in.)	(in.)	
KSB065	0.65	79	246	59	85.1	3	2.25	17-3/8	8-15/16	6	570
KSB075	0.75	91	283	68	85.7	3	2.25	17-3/8	8-15/16	6	570
KSB100	1.00	121	379	91	85.0	3	2.50	17-3/8	8-15/16	6	570
KSB125	1.20	147	458	110	86.4	4	2.75	22-3/8	10-13/16	7	690
KSB150	1.50	181	567	136	85.1	4	3.00	22-3/8	10-13/16	7	690
KSB175	1.75	212	663	159	85.6	5	3.25	27-3/8	13-5/16	8	810
KSB200	1.90	230	721	173	85.3	5	3.50	27-3/8	13-5/16	8	810

- Notes:
1. Net Ratings are based on piping and pick-up allowances of 1.333. The manufacturer should be consulted before selecting a boiler for installations having unusual piping and pickup requirements, such as intermittent system operation, extensive piping systems, etc.
  2. Burner Capacity Rating, GPH is based on #2 oil with a Gross Heating Value equal to 140000 BTU/Gal.
  3. Tankless heater ratings based on 40F inlet water, 140F outlet water, and 190F boiler water. Ratings are also based on 5 minute intermittent draws with 10 minutes between draws.

All residential cast iron steam boilers include a full one year warranty. A limited, 12-year warranty is provided for the cast iron heat exchanger. 5-year and 10-year extended warranties covering parts and labor are also available. Visit [VelocityBoilerWorks.com](http://VelocityBoilerWorks.com) for complete details.

### OPTIONAL EQUIPMENT:



The Kingston KSB Series boiler is compatible with our Steam Boiler Piping Kit, a more convenient way to pipe steam boilers. For more information on the Steam Boiler Piping Kit, visit [VelocityBoilerWorks.com](http://VelocityBoilerWorks.com).

### ADDITIONAL FEATURES/BENEFITS

- Hydrolevel CG450 probe low water cut off
- Attractive split jacket easily removed for servicing
- Three physical sizes with seven firing rates
- Burners packaged separately for easier handling



Specifications are subject to change without notice.