

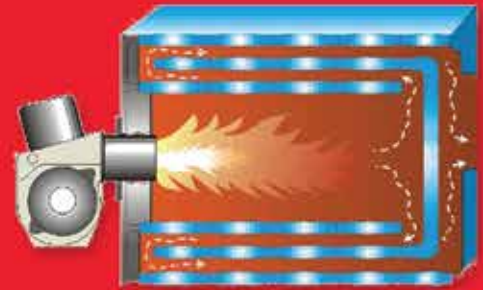


## FW SERIES

Cast Iron 3-Pass Scotch Marine Boiler designed for use with light oil, gas, or a light oil-gas combination.



The FW boiler uses a 3-pass heat exchanger, designed to maximize heat transfer from flue gases to the boiler water, and to minimize the amount of cast iron and water that must be heated. This is achieved by circulating the hot flue gases through the heat exchanger three times, resulting in a more efficient boiler.



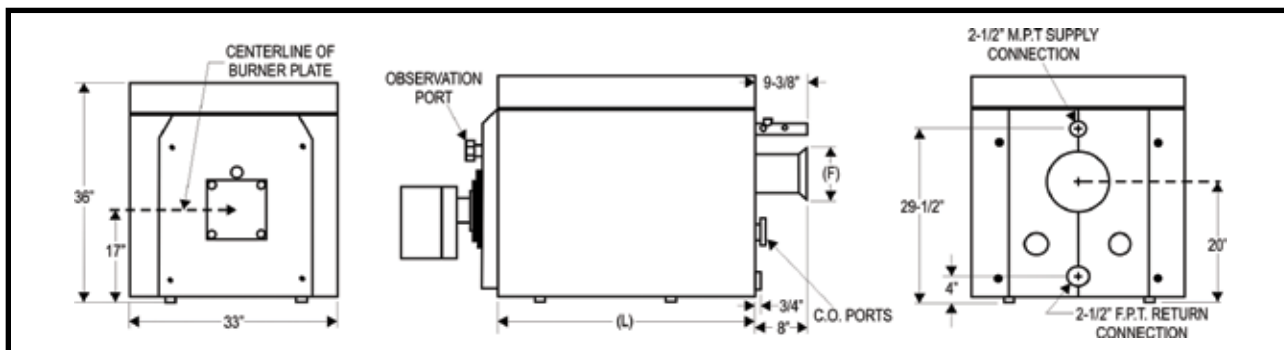
- AHRI burner input 433 to 1,299 MBH
- 3-Pass scotch marine design
- Cast iron push nipples and boiler sections
- Woven glass ropes between sections
- Swing open burner door
- Pressurized for forced draft venting or chimney draft
- Stainless steel baffles easily removed via front door
- Rear flue outlet with quadrant locking damper
- Exclusively designed for forced hot air circulation
- Powder coated, textured, insulated jacket
- 10-year limited warranty

See back side for piping configurations

Quality  
Value &  
Service

# FW SERIES

## TECHNICAL SPECIFICATIONS



CROWN MODEL NUMBER	BURNER INPUT		GROSS OUTPUT		AHRI NET WATER RATING (MBH)	WATER CONTENT (GAL)	DRAFT LOSS (IN. W.C.)	DIMENSIONS (IN.)			DRY WEIGHT (LBS)
	OIL (GPH)	GAS (MBH)	MBH	BHP				[F] VENT DIA.	AHRI VENT DIA.*	[L]	
FW-4	3.0	433	355	10.6	309	15.8	0.16	8	7	26	1126
FW-5	4.0	577	478	14.2	416	19	0.27	8	7	37	1313
FW-6	5.0	722	600	17.9	522	22.2	0.39	10	8	42	1524
FW-7	6.0	866	723	21.6	629	25.4	0.51	10	9	47	1743
FW-8	7.5	1082	907	27.1	789	28.5	0.62	10	10	52	1947
FW-9	9.0	1299	1091	32.6	949	31.7	0.75	10	10	57	2143

\*AHRI Vent Diameter size is the pipe size used from boiler vent connector [F] to termination of stub stack; max. height 15' (for forced draft firing only). For chimney venting consult National Fuel Gas Code.

1. Altitudes above 2,000 ft. - ratings should be reduced at a rate of 4% for each 1,000 ft. above sea level (US only).

2. The AHRI Net Water Ratings are based on a piping and pickup allowance of 1.15.

3. The manufacturer should be consulted before selecting a boiler for installations having unusual piping and pickup requirements, such as intermittent system operation, extensive piping systems, etc.

CROWN MODEL NUMBER	BURNER MOTOR			BURNER MODEL LIGHT OIL	BURNER MODEL GAS	BURNER MODEL GAS/OIL COMB.	GAS TRAIN SIZE	MIN. GAS PRESS REQ. @ BURNER (IN. W.C.)
	MFG.	HP	VOLTAGE					
FW-4	BECKETT	1/3	120-1	CF-500	CG-10	----	----	----
	POWER FLAME	1/3	120-1	C1-0	C1-G-10	C1-GO-10	1-1/4	5.5
FW-5	BECKETT	1/3	120-1	CF-800	CG-10B	----	----	----
	POWER FLAME	1/3	120-1	C1-0	C1-G-10	C1-GO-10	1-1/4	5.5
FW-6	BECKETT	1/3	120-1	CF-800	CG-10B	----	----	----
	POWER FLAME	1/3	120-1	C1-0	C1-G-10	C1-GO-10	1-1/4	5.5
FW-7	BECKETT	1/2	120-1	CF-1400	----	----	----	----
	POWER FLAME	1/3	120-1	C1-0	C1-G-10	C1-GO-10	1-1/4	5.5
FW-8	BECKETT	1/2	120-1	CF-1400	----	----	----	----
	POWER FLAME	3/4	230-1	C2-OA	C2-G-15	C2-GO-15	1-1/2	7.0
FW-9	BECKETT	1/2	120-1	CF-2300	----	----	----	----
	POWER FLAME	3/4	230-1	C2-OA	C2-G-15	C2-GO-15	1-1/2	7.0

All cast iron boiler models include a full one-year warranty. A 10-year limited warranty is provided for the heat exchanger. A 5-year and a 10-year extended warranty covering parts and labor are also available. Visit [VelocityBoilerWorks.com](http://VelocityBoilerWorks.com) or see your warranty for complete details.



The Mega-Stor II® indirect water heater utilizes the energy created by your boiler to produce abundant hot water for your home. Mega-Stor II water heaters come in a variety of sizes from 26 to 119 gallons to meet a variety of residential and commercial needs. A Horizontal model is also available in 40 and 53 gallon sizes, as well as a Solar model in 79 and 119 gallon sizes.



Specifications are subject to change without notice.

[VelocityBoilerWorks.com](http://VelocityBoilerWorks.com) | Philadelphia PA

FW - 10/16  
PN 980520