



**D E S I G N E D T O L E A D**

# FSZ Series

**Oil-Fired Steam Boilers**

## INSTALLATION INSTRUCTIONS

These instructions must be affixed on or adjacent to the boiler



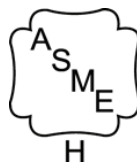
### WARNING

Improper installation, adjustment, alteration, service or maintenance can cause property damage, injury, or loss of life. For assistance or additional information, consult a qualified installer, service agency or the gas supplier. This boiler requires a special venting system. Read these instructions carefully before installing.

### Models:

- FSZ080
- FSZ100
- FSZ130
- FSZ160

**Quality  
Value &  
Service**



## IMPORTANT INFORMATION - READ CAREFULLY

All boilers must be installed in accordance with National, State and Local Plumbing, Heating and Electrical Codes and the regulations of the serving utilities. These Codes and Regulations may differ from this instruction manual. Authorities having jurisdiction should be consulted before installations are made.

In all cases, reference should be made to the following Standards:

### USA BOILERS

- A. Current Edition of American National Standard *ANSI/NFPA 31, "Installation of Oil Burning Equipment"*, for recommended installation practices.
- B. Current Edition of American National Standard *ANSI/NFPA 211, "Chimneys, Fireplaces, Vents, and Solid Fuel Burning Appliances"*, For Venting requirements.
- C. Current Edition of American Society of Mechanical Engineers *ASME CSD-1, "Controls and Safety Devices for Automatically Fired Boilers"*, for assembly and operations of controls and safety devices.
- D. All wiring on boilers installed in the USA shall be made in accordance with the National Electrical Code and/or Local Regulations.

### CANADIAN BOILERS

- A. Current Edition of Canadian Standards Association CSA B139, *"Installation Code for Oil Burning Equipment"*, for recommended Installation Practices.
- B. All wiring on boilers installed in Canada shall be made in accordance with the Canadian Electrical Code and/or Local Regulations.

The following terms are used throughout this manual to bring attention to the presence of hazards of various risk levels, or to important information concerning product life.



### DANGER

Indicates an imminently hazardous situation which, if not avoided, will result in death, serious injury or substantial property damage.

### CAUTION

Indicates a potentially hazardous situation which, if not avoided, may result in moderate or minor injury or property damage.



### WARNING

Indicates a potentially hazardous situation which, if not avoided, could result in death, serious injury or substantial property damage.

### NOTICE

Indicates special instructions on installation, operation, or maintenance which are important but not related to personal injury hazards.

## NOTICE

This boiler has a limited warranty, a copy of which is included with this boiler.

The warranty for this boiler is valid only if the boiler has been installed, maintained and operated in accordance with these instructions.

Surface rust on cast iron sections may be attributed to the manufacturing process as well as condensation during storage. Surface rust is normal and does not affect the performance or longevity of a boiler.



## **DANGER**

**DO NOT store or use gasoline or other flammable vapors or liquids in the vicinity of this or any other appliance.**



## **WARNING**

Improper installation, adjustment, alteration, service or maintenance can cause property damage, personal injury or loss of life. Failure to follow all instructions in the proper order can cause personal injury or death. Read and understand all instructions, including all those contained in component manufacturers manuals which are provided with the boiler before installing, starting-up, operating, maintaining or servicing this boiler. Keep this manual and literature in legible condition and posted near boiler for reference by owner and service technician.

This boiler requires regular maintenance and service to operate safely. Follow the instructions contained in this manual.

Installation, maintenance, and service must be performed only by an experienced, skilled and knowledgeable installer or service agency.

All heating systems should be designed by competent contractors and only persons knowledgeable in the layout and installation of hydronic heating systems should attempt installation of any boiler.

Installation is not complete unless a safety valve is installed into rear section boss, at the back of rear section per Figure 8.1 located in Section VIII, "System Piping" of this manual.

It is the responsibility of the installing contractor to see that all controls are correctly installed and are operating properly when the installation is completed.

This boiler is suitable for installation on combustible flooring. Do not install boiler on carpeting.

Do not tamper with or alter the boiler or controls.

Inspect flueways at least once a year - preferably at the start of the heating season. The inside of the combustion chamber, the vent system and boiler flueways should be cleaned if soot or scale has accumulated.

When cleaning this boiler, take precaution to avoid damage to burner swing door insulation. If damaged, or if there is evidence of previous damage, burner swing door insulation must be replaced immediately.

Oil Burner and Controls must be checked at least once a year or as may be necessitated.

Do not operate boiler with jumpered or absent controls or safety devices.

Do not operate boiler if any control, switch, component, or device has been subject to water.

Appliance materials of construction, products of combustion and the fuel contain alumina, silica, heavy metals, carbon monoxide, nitrogen oxides, aldehydes and/or other toxic or harmful substances which can cause death or serious injury and which are known to the state of California to cause cancer, birth defects and other reproductive harm. Always use proper safety clothing, respirators and equipment when servicing or working nearby the appliance.



## WARNINGS FOR THE HOMEOWNER

**FOLLOW ALL INSTRUCTIONS** and warnings printed in this manual and posted on the boiler.

**INSPECT THE BOILER, BURNER AND CONTROLS ANNUALLY.** To keep your boiler safe and efficient, have a service technician follow the Service checklist near the end of this manual.

**IF YOU ARE NOT QUALIFIED** to install or service boilers, do not install or service this one.

**THE BOILER MAY LEAK WATER** at the end of its useful life. Be sure to protect walls, carpets, and valuables from water that could leak from the boiler.

**PROTECT YOUR HOME IN FREEZING WEATHER.** A power outage, safety lockout, or component failure will prevent your boiler from lighting. In winter, your pipes may freeze and cause extensive property damage. Do not leave the heating system unattended during cold weather unless alarms

or other safeguards are in place to prevent such damage

**DO NOT BLOCK AIR FLOW** into or around the boiler. Insufficient air may cause the boiler to produce carbon monoxide or start a fire.

**KEEP FLAMMABLE LIQUIDS AWAY** from the boiler, including paint, solvents, and gasoline. The boiler may ignite the vapors from the liquids causing explosion or fire.

**KEEP CHILDREN AND PETS** away from hot surfaces of the boiler, boiler piping, and vent pipe.

**CARBON MONOXIDE (CO)** is an odorless, deadly gas that may be introduced into your home by any malfunctioning fuel-burning product or vent system failure. Consider installing CO alarms near bedrooms in all levels of the building to warn you and your family of potential CO exposure.



## WARNINGS FOR THE INSTALLER

**READ THIS ENTIRE MANUAL** before attempting installation, start-up, or service. Improper installation, adjustment, alteration, service, or maintenance may cause serious property damage, personal injury, or death.

**DO NOT DISCONNECT PIPE FITTINGS** on the boiler or in the heating system without first verifying that the system is cool and free of pressure and that your clothing will protect you from a release of hot water or steam. Do not rely solely on the boiler's temperature and pressure gauge when making this judgment.

**USE PROPER PERSONAL PROTECTION EQUIPMENT** when servicing or working near the boiler. Materials of construction, flue products, and fuel contain alumina, silica, heavy metals, carbon monoxide, nitrogen oxides, and/or other toxic or harmful substances that can be hazardous to health and life and that are known to the State of California to cause cancer, birth defects, and other reproductive harm.

**INSTALL ALL GUARDS,** cover plates, and enclosures before operating the boiler.

**SIZE THE BOILER PROPERLY** relative to the design heat load or, if using domestic hot water priority, the peak hot water load, whichever is larger. A grossly oversized boiler will cycle excessively and this will lead to premature failure of the boiler and its components. Our warranty does not apply to damage from excessive cycling.

**ADHERE TO ALL LOCAL CODE REQUIREMENTS.** Contact your local code inspector prior to installation. In the absence of a local code, adhere to the latest editions of the *Installation of Oil Burning Equipment ANSI/NFPA 31* in the USA or *CAN/CSA B139, Installation Code for Oil Burning Equipment* in Canada.

**ALL WIRING** must comply with the *National Electrical Code ANSI/NFPA 70* (in the USA) or the *Canadian Electrical Code CSA C22.1* (in Canada) and any local regulations.



## WARNING

This boiler contains very hot water under high pressure. Do not unscrew any pipe fittings nor attempt to disconnect any components of this boiler without positively assuring the water is cool and has no pressure. Always wear protective clothing and equipment when installing, starting up or servicing this boiler to prevent scald injuries. Do not rely on the pressure and temperature gauges to determine the temperature and pressure of the boiler. This boiler contains components which become very hot when the boiler is operating. Do not touch any components unless they are cool.

This boiler must be properly vented. The chimney must be inspected for any obstructions and cleaned prior to each heating season. A clean and unobstructed chimney flue is necessary to produce the minimum draft required to safely evacuate noxious fumes that could cause personal injury or loss of life. Evidence of loose debris and or condensate induced stains at the base of the chimney flue, connector or smokepipe joints may be signs of condensing flue gases. Flue gas condensate is corrosive, which requires special consideration and must be addressed immediately. Refer to Section VII, "Venting" for more details.

This boiler needs fresh air for safe operation and must be installed so there are provisions for adequate combustion and ventilation air.

This boiler is supplied with controls which may cause the boiler to shut down and not re-start without service. If damage due to frozen pipes is a possibility, the heating system should not be left unattended in cold weather; or appropriate safeguards and alarms should be installed on the heating system to prevent damage if the boiler is inoperative.

This boiler is designed to burn No. 2 fuel oil only. Do not use gasoline, crankcase drainings, or any oil containing gasoline. Never burn garbage or paper in this boiler. Do not convert to any solid fuel (i.e. wood, coal). Do not convert to any gaseous fuel (i.e. natural gas, LP). All flammable debris, rags, paper, wood scraps, etc., should be kept clear of the boiler at all times. Keep the boiler area clean and free of fire hazards.

All boilers equipped with burner swing door have a potential hazard which, if ignored, can cause severe property damage, personal injury or loss of life. Before opening swing door, unplug burner power cord from receptacle located in lower right corner of jacket front panel and turn off service switch to boiler to prevent accidental firing of burner outside the combustion chamber. Be sure to tighten swing door fasteners completely when service is completed.

## Table of Contents

I.	Product Description .....	6
II.	Specifications .....	6
III.	Before Installing .....	8
IV.	Field Assembly .....	9
V.	Locating the Boiler .....	11
VI.	Air for Combustion & Ventilation .....	12
VII.	Venting .....	17
VIII.	System Piping .....	19
IX.	Indirect & Tankless Water Heater Piping .....	23
X.	Fuel Line Piping .....	26
XI.	Wiring .....	29
XII.	Start-Up & Checkout .....	34
XIII.	Service & Maintenance .....	39
XIV.	Troubleshooting .....	43
XV.	Parts .....	44
	Appendix A. Installation of Optional Gravity Return Piping Kit .....	50

## I Product Description

The FSZ series boiler is a cast iron oil-fired steam boiler designed for use in closed heating systems. This boiler must be vented by natural draft into a lined masonry or metal chimney, or Type L vent. An adequate supply of air for combustion, ventilation and dilution of flue gases must be available in the boiler room. This boiler has connections for use with an indirect domestic water heater.


The FSZ series boilers are not designed for use in process or other “open” steam systems.

## II Specifications

**TABLE 2.1: GENERAL SPECIFICATIONS**

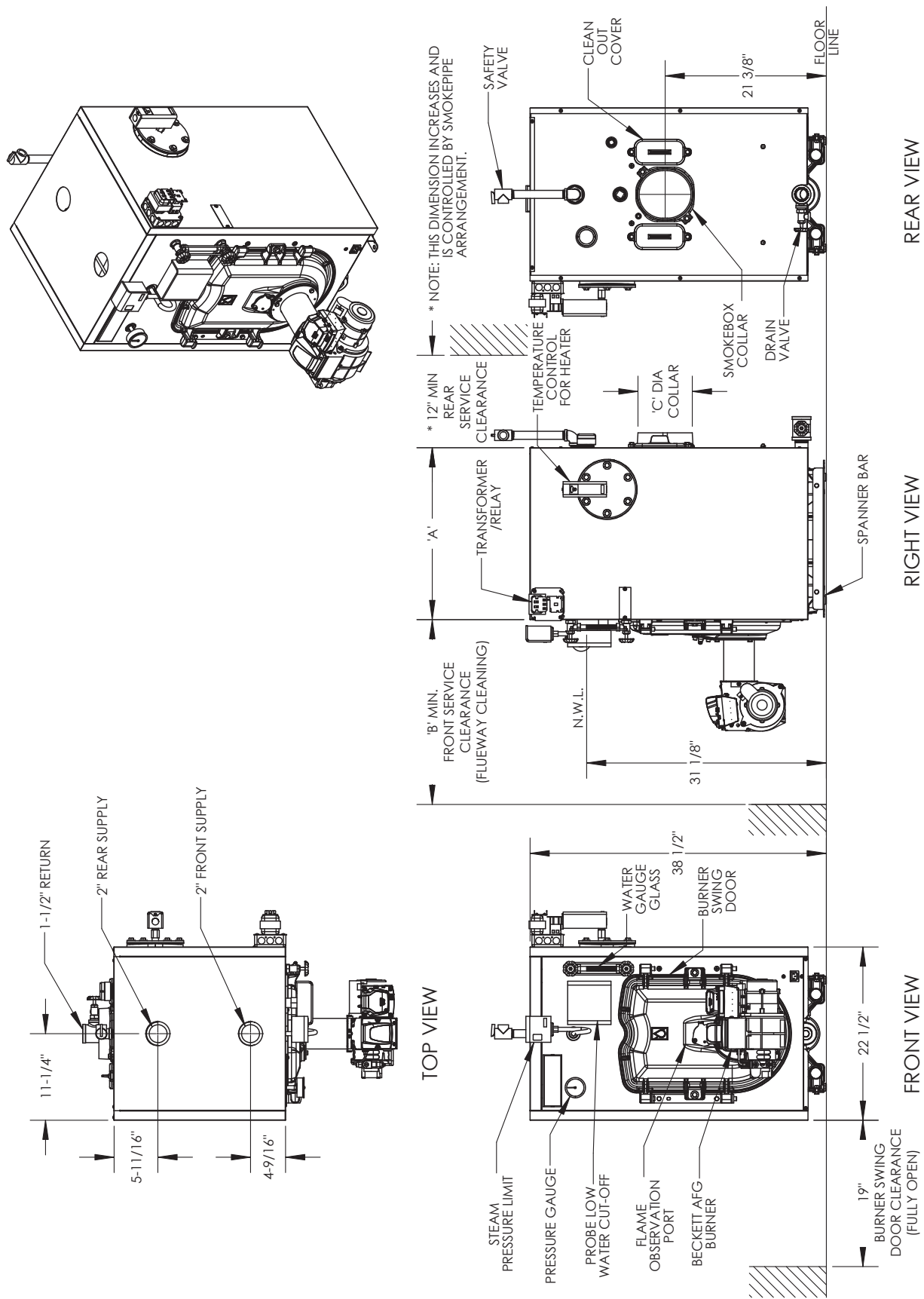
BOILER MODEL	DIMENSIONS			WATER CONTENT (TO NORMAL WATER LINE) (GALLONS)		HEAT TRANSFER SURFACE AREA (SQ FT)	SHIPPING WEIGHT (LBS)
	‘A’	‘B’	‘C’	WITH TANKLESS HEATER	NON-HEATER		
FSZ080	22-1/4”	24”	6”	15.3	14.9	20.29	607
FSZ100	22-1/4”	24”	6”	15.3	14.9	20.29	607
FSZ130	28-1/4”	30”	6”	19.7	19.3	27.29	744
FSZ160	34-1/4”	36”	7”	24.1	23.8	34.29	881
Maximum working pressure, Steam - 15psi							

**TABLE 2.2: RATING DATA**

 <b>FSZ Series AHRI Ratings</b>							<b>Other Specifications</b>		
BOILER MODEL	BURNER INPUT		HEATING CAPACITY MBH	NET AHRI RATINGS*		AFUE (%)	MINIMUM CHIMNEY REQUIREMENTS		
	GPH	MBH		STEAM MBH	STEAM SQ. FT.		ROUND IN. DIA.	RECTANGLE IN. X IN.	HEIGHT FT.
FSZ080	0.80	112	97	73	303	85.7	6	8 X 8	15
FSZ100	1.00	140	122	92	381	86.0	6	8 X 8	15
FSZ130	1.30	182	158	119	494	86.0	7	8 X 8	15
FSZ160	1.60	224	195	146	610	85.9	7	8 X 8	15
Burner Capacity Rating, GPH is based on #2 fuel oil with a Gross Heating Value equal to 140,000 BTU/Gal.									
*AHRI Net Ratings are based on piping and pick-up allowances of 1.333.									

**TABLE 2.3: TANKLESS HEATER RATINGS**

BOILER MODEL	HEATER RATING (GPM)	PRESSURE DROP THRU HEATER (PSI)
FSZ080	3.00	22.0
FSZ100	3.25	24.3
FSZ130	3.50	26.5
FSZ160	4.00	31.0
Ratings based on 40F inlet water, 140F outlet water, and 190F boiler water. Ratings are also based on 5 minute intermittent draws with 10 minutes between draws.		



**FIGURE 2.3: GENERAL CONFIGURATION**



### III Before Installing

- 1) Safe, reliable operation of this boiler depends upon installation by a professional heating contractor in strict accordance with this manual and the requirements of the authority having jurisdiction.
  - In the absence of an authority having jurisdiction, installation must be in accordance with this manual and the latest edition of *Installation of Oil Burning Equipment* (ANSI/NFPA31). Installations in Canada comply with the requirements of CSA B139-04 – *Installation Code for Oil-burning Equipment*.
  - Where required by the authority having jurisdiction, this installation must conform to the latest edition of *Standard for Controls and Safety Devices for Automatically Fired Boilers* (ANSI/ASME CSD-1).
- 2) Make sure that a properly sized chimney is available which is in good condition. Consult the authority having jurisdiction, Part VII of this manual, and ANSI/NFPA31 for additional information on venting requirements.
- 3) Make sure that the boiler is correctly sized. Do this by totalling the surface area of all radiators in the system (in sq. feet). To this, add any other space heating (not DHW) loads. Select a boiler having a net rating just larger than this total heating load. Note: 1 sq. ft of radiation is equal to 240 BTU/hr.
- 4) In some cases, boilers installed at altitudes above 2000ft may require a different burner configuration from that at sea level. Consult the local Crown representative for more information.



#### CAUTION

**As with all oil-fired appliances, “Power Venting” this boiler creates a number of potential problems, especially when this is done through a side wall. These include, but are not necessarily limited to:**

- **Accelerated rate of soot buildup on the oil burner cad-cell, burner head, and/or in the boiler itself.**
- **Odor complaints**
- **Severe damage to the side of the structure in the event that the boiler operates at a high smoke level.**

**These problems can occur for many reasons, some of which are out of the control of both the installer and the appliance manufacturer. The use of a chimney to vent this boiler is therefore recommended. If a power venter must be used, it is the responsibility of the installer and power venter manufacturer to “engineer” the power vent system. CROWN BOILER COMPANY WILL ASSUME NO RESPONSIBILITY FOR DAMAGE TO SIDING, ETC. FROM A POWER VENTED OIL-FIRED BOILER. THIS APPLIES REGARDLESS OF THE CAUSE OF THE SOOTING.**



#### CAUTION

**Fuel oil used with this boiler must conform to ASTM D396. The ASTM D396 standard sets a 5% limit on biodiesel concentration, requires that the biodiesel feedstock comply with ASTM D6751, and also specifies the procedure that must be used to blend the biodiesel feedstock with the #2 fuel oil. Attempts to use biodiesel blends not meeting all ASTM D396 requirements may result in unreliable operation or severe property damage.**



## IV Field Assembly

This boiler is shipped in two pieces:

- a) The crated boiler itself with the following loose parts either packed in the combustion chamber or glued to the skid:
  - Barometric Draft Regulator (if supplied)
  - Pop Safety valve
  - Pipe Fittings
- b) The burner carton consisting of the following items:
  - Oil Burner assembly
  - Baffles in some cases (see Table 4.1)
  - Refractory blanket in some cases (see Table 4.1)



### WARNING

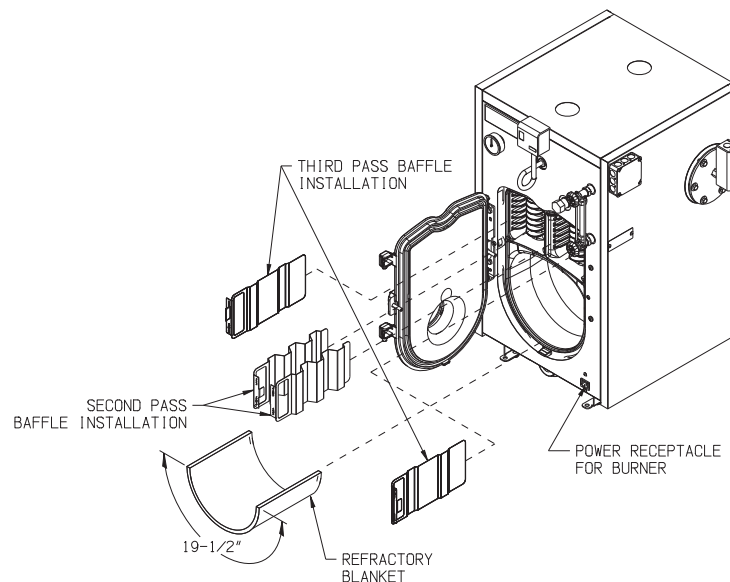
**Installation of burners on the FSZ other than those provided by Crown, and marked for use with this boiler, may result in unreliable operation, property damage, personal injury, or loss of life.**

It is recommended that the boiler be moved to its final location before the items in the burner carton are installed. To complete field assembly:

- 1) Make sure that the burner carton supplied is the correct one for the boiler. The crate tag on the boiler lists the Crown part numbers for the Beckett and Riello burner cartons that may be used with it.
- 2) Remove the burner mounting bolts and washers from the front door. Make sure that the burner gasket is in place and undamaged and mount the burner to the door.
- 3) Plug the burner cord into the receptacle on the lower right front corner of the boiler as shown in Figure 4.0
- 4) Install the barometric draft regulator, and other piping/trim, as described in the Venting and Piping sections of this manual.
- 5) Different baffle arrangements are used based on the boiler size and choice of burner. In some cases these baffles are included in the boiler and in other cases they are provided in the burner carton. In addition, some models use a refractory blanket which is shipped in the burner carton and which must be installed in the combustion chamber. Finally, in some cases burners are supplied with insulation wrapped around the inserted burner tube.

Table 4.1 summarizes the use of baffles, blankets, and burner tube insulation.

- 6) Attach the model-specific rating plate for the specific boiler model that is provided in the burner box to the left of the permanent rating plate already on the boiler (Figure 4.2). Note that some burner boxes may contain rating plates for both water and steam models; be sure to select the appropriate FSZ series rating plate. Before applying the rating plate clean the area where it is to be applied with a clean, dry lint free cloth.



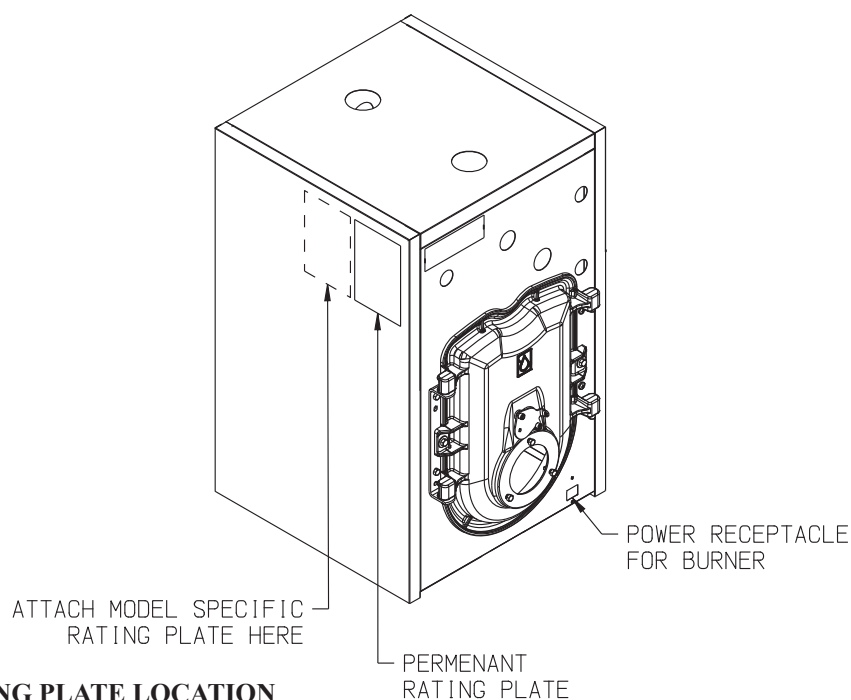
**FIGURE 4.0: BOILER FIELD ASSEMBLY**

**TABLE 4.1: BASIC BOILER CONFIGURATIONS**

Model	Boiler Part #	Burner	Burner Carton Part #	Blanket	Burner Tube Insulation	2 <sup>nd</sup> Pass Baffle (410008)	3 <sup>rd</sup> Pass Baffle (410007)
FSZ080	FSZ003 <sup>1</sup>	Beckett	42080B	No	No	No	No
FSZ080	FSZ003 <sup>1</sup>	Riello	41081R	Yes <sup>2</sup>	Yes	No	Yes <sup>2</sup>
FSZ080	FSZ003 <sup>1</sup>	Carlin	41081C	Yes <sup>2</sup>	Yes	No	Yes <sup>2</sup>
FSZ100	FSZ003 <sup>1</sup>	Beckett	41100B	No	No	Yes <sup>2</sup>	No
FSZ100	FSZ003 <sup>1</sup>	Riello	41100R	No	No	Yes <sup>2</sup>	No
FSZ100	FSZ003 <sup>1</sup>	Carlin	41100C	Yes <sup>2</sup>	Yes	Yes <sup>2</sup>	Yes <sup>2</sup>
FSZ130	FSZ004 <sup>1</sup>	Beckett	41130B	No	No	Yes	No
FSZ130	FSZ004 <sup>1</sup>	Riello	41130R	No	No	Yes	No
FSZ130	FSZ004 <sup>1</sup>	Carlin	41130C	Yes <sup>2</sup>	Yes	Yes	Yes <sup>2</sup>
FSZ160	FSZ005 <sup>1</sup>	Beckett	41160B	No	No	Yes	No
FSZ160	FSZ005 <sup>1</sup>	Riello	41160R	No	No	Yes	No
FSZ160	FSZ005 <sup>1</sup>	Carlin	41160C	Yes <sup>2</sup>	Yes	Yes	Yes <sup>2</sup>

<sup>1</sup> Boiler PN may contain additional characters after those shown to designate other options

<sup>2</sup> Included in burner box.



**FIGURE 4.2: RATING PLATE LOCATION**

## V Locating the Boiler



### WARNING

Failure to observe the following location requirements could result in property damage, a fire, explosion or carbon monoxide (CO) hazard.

#### 1) Clearances:

- Observe the minimum clearances shown below. Except as noted, these clearances apply to all combustible construction, as well as noncombustible walls, ceilings and doors. Also see Figure 5.0.

Front - 24" (from front jacket surface)

Left Side - 6"

Right Side - 6" (18" is required for tankless heater service)

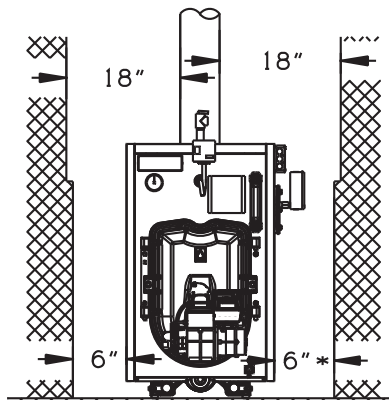
Rear - 12"

Top - 6"

Single Wall Chimney Connector (to combustible construction) - 18"

- A 24" service clearance is recommended above the top of the boiler, as well as on the side to which the burner swing door opens (the left side as the boiler is shipped). See also dimension 'B' in Table 2.0 for recommended service clearances to the front of the boiler. These clearances may be reduced to those shown above; however, servicing the boiler will become increasingly difficult as these clearances are reduced.

FRONT VIEW



\*18" CLEARANCE REQUIRED WHEN  
BOILER IS EQUIPPED WITH  
TANKLESS HEATER

RIGHT SIDE VIEW

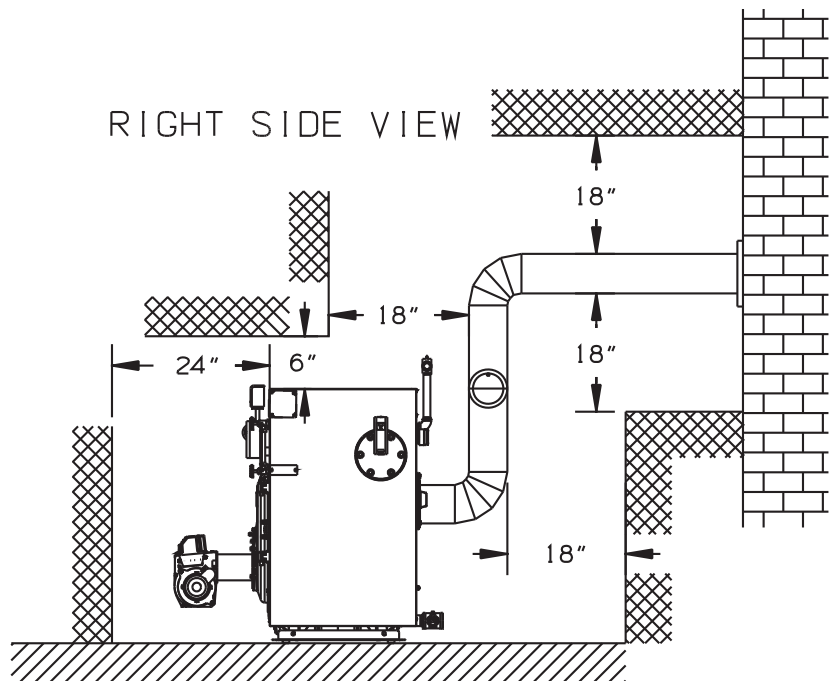
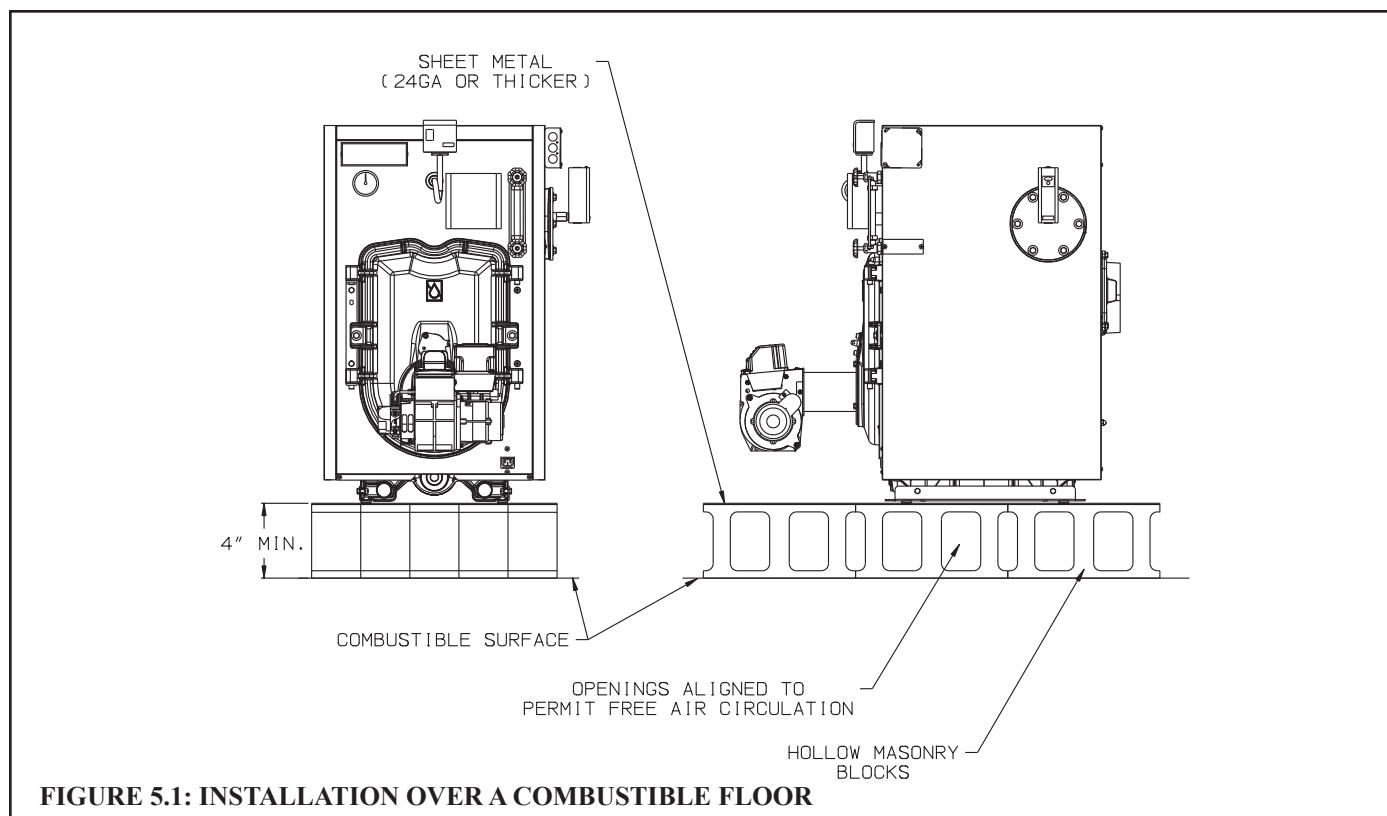


FIGURE 5.0: CLEARANCES

- 1) Do not install this boiler directly on a combustible floor. Where it is desired to install an FSZ on a non-carpeted combustible floor, install the boiler on a base constructed as shown in Figure 5.1
- 2) If listed Type L vent is used, follow vent pipe manufacturer recommendations for minimum clearances.
- 3) Do not install this boiler in a location where gasoline or other flammable vapors or liquids will be stored or used. Do not install this boiler in an area where large amounts of airborne dust will be present, such as a workshop.



## VI Air for Combustion and Ventilation

Sufficient fresh air must be supplied for combustion and ventilation. Provisions for combustion and ventilation air for oil burning equipment must be made in accordance with the *Standard for the Installation of Oil Burning Equipment* (ANSI/NFPA 31).

To ensure an adequate supply of air for combustion, ventilation and flue gas dilution, start by determining whether adequate combustion and ventilation air can be obtained through natural infiltration (air leaking into the building through cracks around windows, doors, etc). Examples of construction features which could prevent adequate natural infiltration include:

- Walls and ceilings exposed to outside atmosphere having a continuous water vapor retarder with a rating of 1 perm or less with openings gasketed and sealed
- Weather stripping added on openable windows and doors
- Caulking and sealants are applied to areas such as joints around window and door frames, between sole plates and floors, between wall-ceiling joints, between wall panels, at penetrations for plumbing, electrical, and gas lines, and at other openings.
- Large exhaust fans

In this manual, buildings where natural infiltration will not provide adequate air for combustion, and ventilation are referred to as “buildings of unusually tight construction”. If in doubt, assume that the building in which the boiler is installed is of unusually tight construction.

## A. For Buildings of Other than Unusually Tight Construction

- 1) Determine whether the boiler is to be installed in a confined space - A confined space is defined as having a volume less than 50 cubic feet per 1000 BTU/hr input of all appliances installed in that space. To determine whether the boiler room is a confined space:
  - a) Total the input of all appliances in the boiler room in thousands of BTU/hr. Round the result to the next highest 1000 BTU/hr.
  - b) Find the volume of the room in cubic feet. The volume of the room in cubic feet is:  
Length (ft) x width (ft) x ceiling height (ft)  
In calculating the volume of the boiler room, consider the volume of adjoining spaces only if no doors are installed between them. If doors are installed between the boiler room and an adjoining space, do not consider the volume of the adjoining space, even if the door is normally left open.
  - c) Divide the volume of the boiler room by the input in thousands of BTU/hr. If the result is less than 50, the boiler room is a confined space.

*Example:*

*An FSZ080 and a water heater are to be installed in a room measuring 6 ft - 3 in x 7 ft with an 8 ft ceiling. The water heater has an input of 30000 BTU/hr:*

*Input of FSZ080 = 0.80 Gal/hr x 140000 BTU/Gal = 112000 BTU/hr*

*Total input in thousands of BTU/hr = (112000 BTU/hr + 30000 BTU/hr)/1000 = 142*

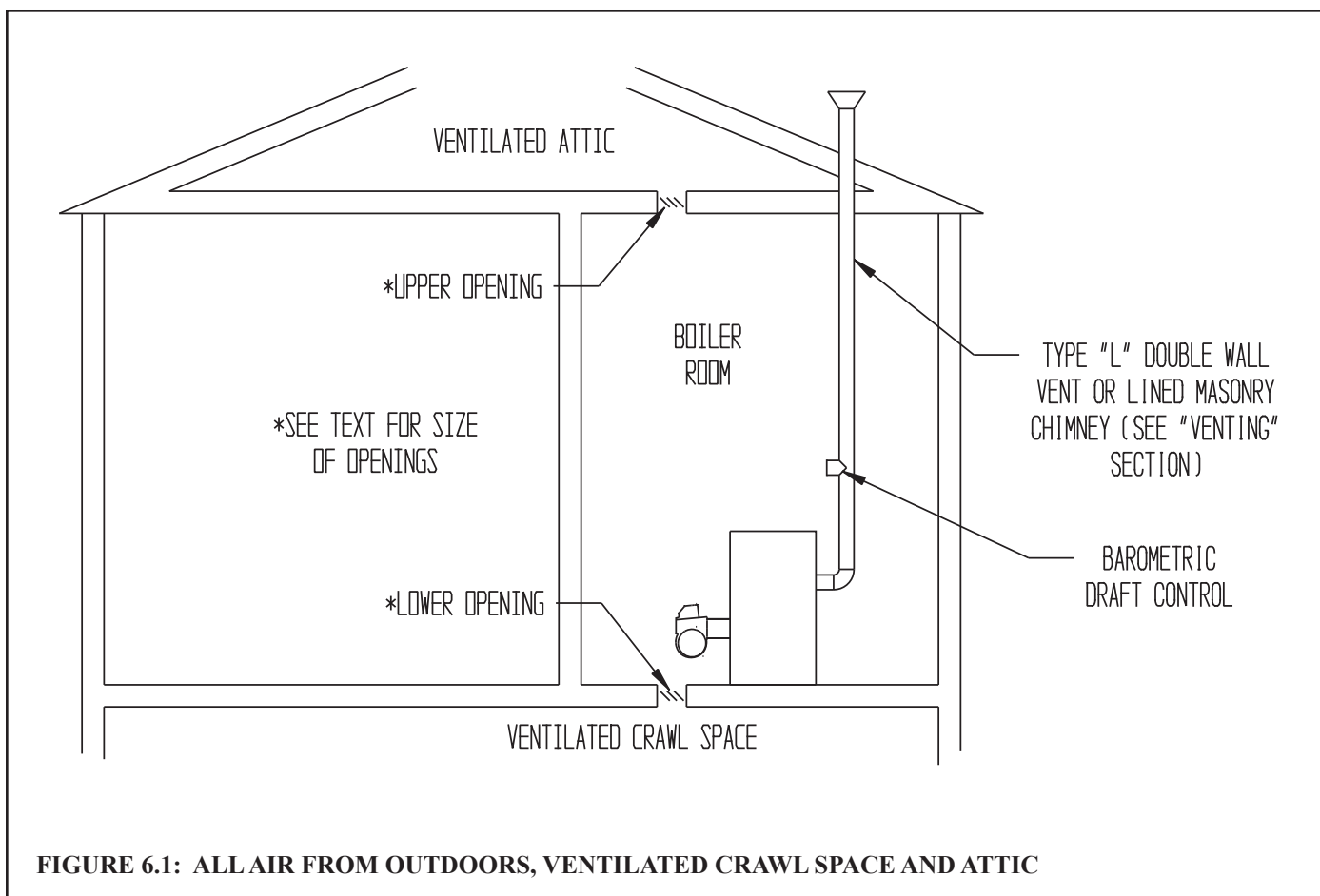
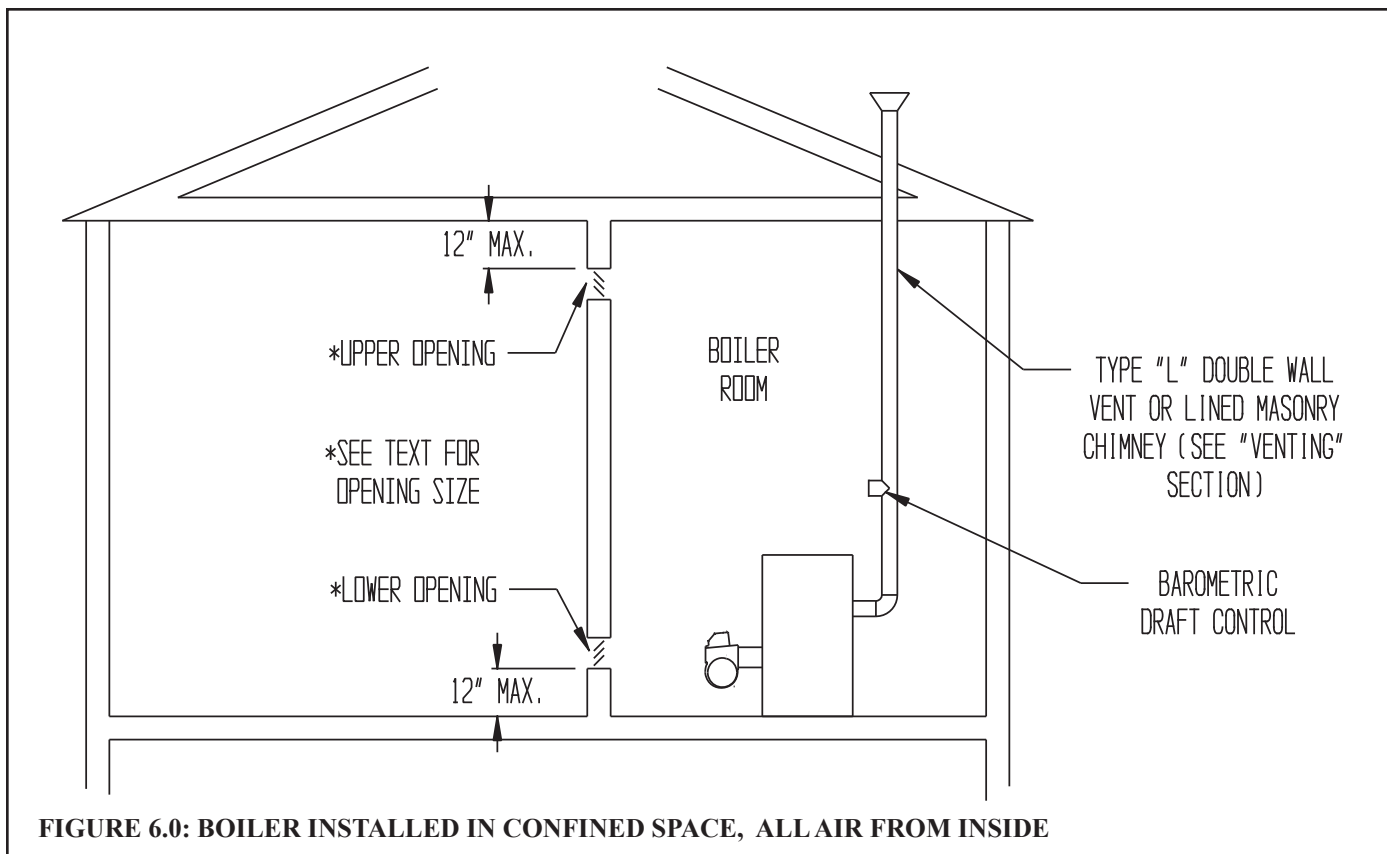
*Volume of room = 6.25 ft x 7 ft x 8 ft = 350 ft<sup>3</sup>*

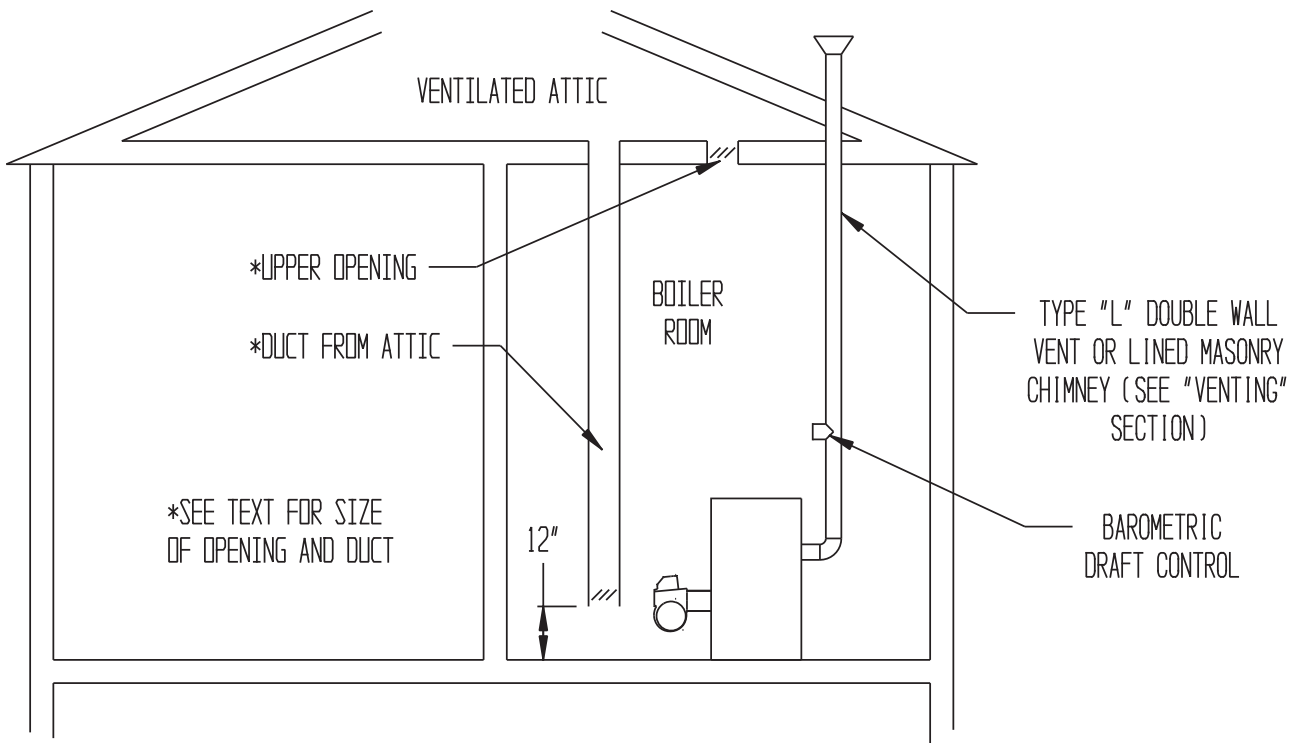
*350/142 = 2.46. Since 2.46 is less than 50, the boiler room is a confined space.*

- 2) Unconfined Space - Natural infiltration into the boiler room will normally provide adequate air for combustion and ventilation without additional louvers or openings into boiler room.
- 3) Confined Space - Provide two openings into the boiler room, one near the floor and one near the ceiling. The top edge of the upper opening must be within 12" of the ceiling and the bottom edge of the lower opening must be within 12" of the floor (Figure 6.0).
  - Each opening must have a free area of 1 square inch per 1000 BTU/hr input of all fuel burning appliances in the boiler room. The minimum opening dimension is 3 inches. Minimum opening free area is 100 square inches per opening.
  - If the total volume of both the boiler room and the room to which the openings connect is less than 50 cubic feet per 1000 BTU/hr of total appliance input, install a pair of identical openings into a third room. Connect additional rooms with openings until the total volume of all rooms is at least 50 cubic feet per 1000 BTU/hr of input.
  - The "free area" of an opening takes into account the blocking effect of mesh, grills, and louvers. Where screens are used, they must be no finer than 1/4" (4 x 4) mesh.

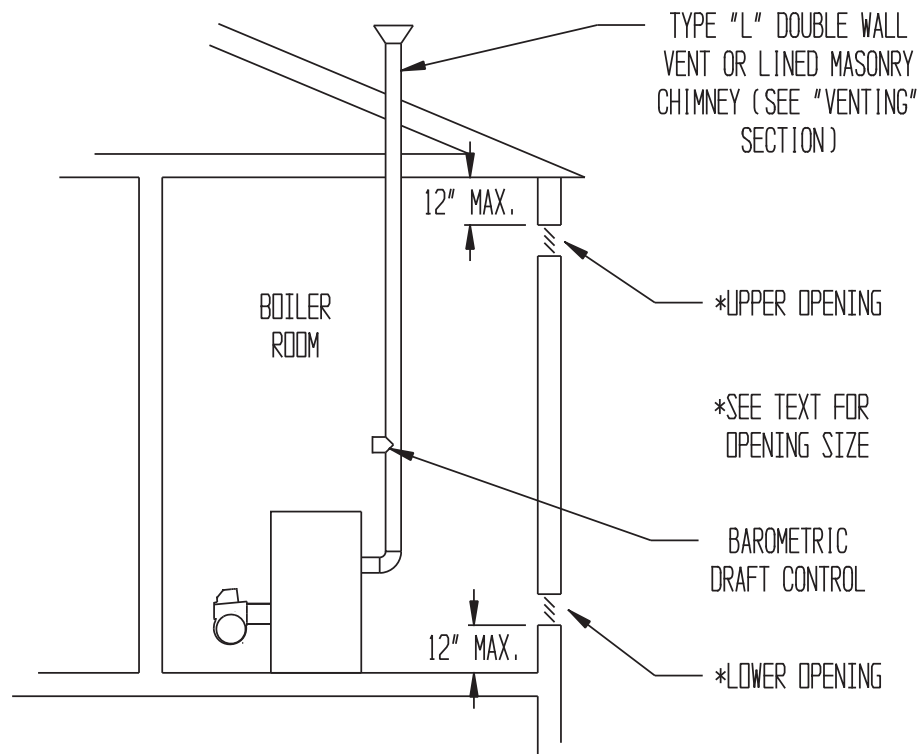
## B. For Buildings of Unusually Tight Construction

- 1) Openings must be installed between the boiler room and the outdoors or a ventilated space, such as an attic or crawl space, which communicates directly with the outdoors.
- 2) Two openings are required. The top edge of the upper opening must be within 12 inches of the ceiling. The bottom edge of the lower opening must be within 12 inches of the floor.
- 3) Size openings and ducts as follows:
  - Vertical ducts or openings directly outdoors (Figure 6.1, Figure 6.2, and Figure 6.3) - Each opening must have a free cross sectional area of 1 square inch per 4000 BTU/hr of the total input of all fuel fired appliances in the boiler room but not less than 100 square inches. Minimum opening size is 3 inches.
  - Openings to outdoors via horizontal ducts (Figure 6.4) - Each opening must have a free cross sectional area of 1 square inch per 2000 BTU/hr of the total input of all fuel fired appliances in the boiler room but not less than 100 square inches. Minimum opening size is 3 inches.
  - The "free area" of an opening takes into account the blocking effect of mesh, grills, and louvers. Where screens are used, they must be no finer than 1/4" (4 x 4) mesh.



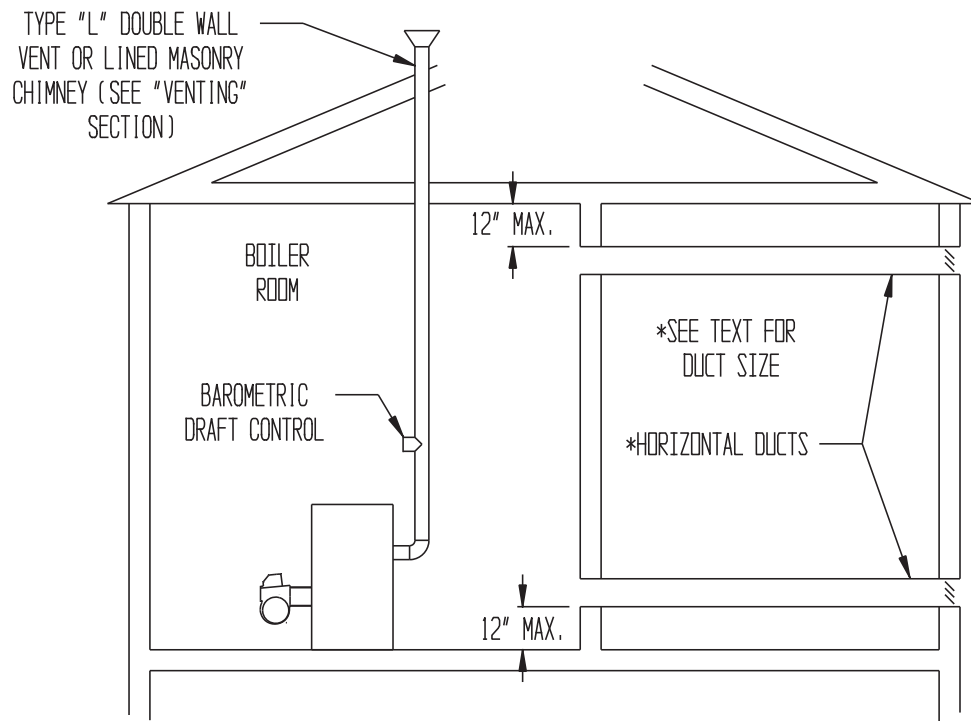


**FIGURE 6.2: ALL AIR FROM OUTDOORS, VIA VENTILATED ATTIC**



**FIGURE 6.3: ALL AIR FROM OUTDOORS, USING OPENINGS INTO BOILER ROOM**





**FIGURE 6.4: ALL AIR FROM OUTDOORS, USING HORIZONTAL DUCTS INTO BOILER ROOM**

## VII Venting



### WARNING

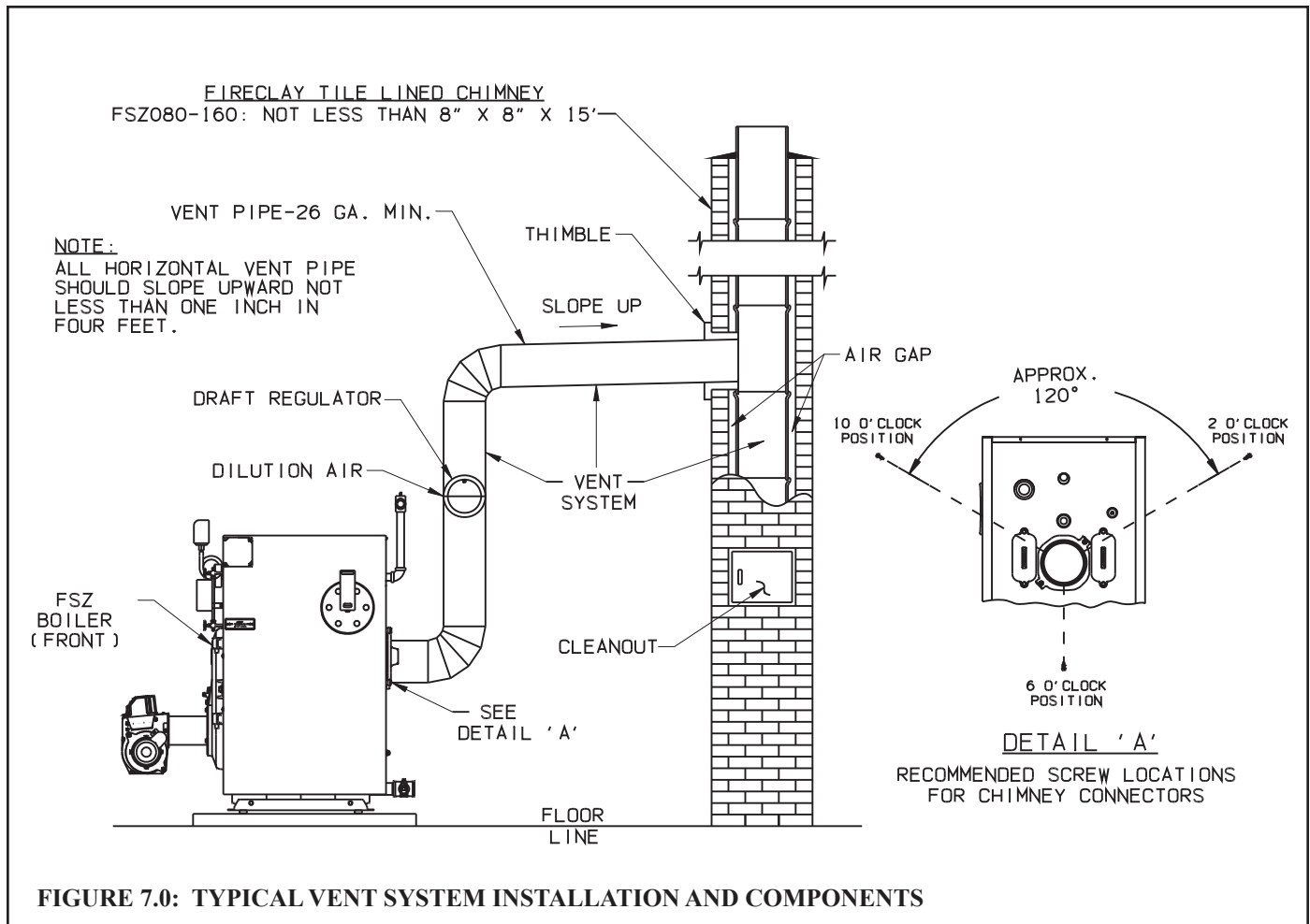
- Improper venting may result in property damage and/or the release of flue gases, which contain deadly carbon monoxide (CO), into the home, which can cause severe personal injury or death.
- Inspect existing chimney before installing boiler. Failure to clean or replace damaged pipe or tile lining will cause property damage, severe personal injury or death.
- Do not de-rate the appliance. Failure to fire the unit at its designed input may cause excessive condensation upon the interior walls of the chimney. In addition, the lower input may not create enough draft to adequately evacuate the products of combustion.

The vent installation must be in accordance with local building codes, or the local authority having jurisdiction. Contact your local fire and building officials on specific requirements for restrictions and the installation of fuel oil burning equipment. In the absence of other applicable codes, the vent system installation must meet the requirements of NFPA 31 – *Standard for the Installation of Oil-Burning Equipment* and NFPA 211 – *Standard for Chimneys, Fireplaces, Vents, and Solid Fuel-Burning Appliances*. Vent systems in Canada must comply with CSA B139-04 – *Installation Code for Oil-burning Equipment*.

A typical vent system is illustrated in Figure 7.0. The components of the vent installation are the vent connector (breeching), barometric draft regulator, and chimney.

- 1) Acceptable Chimneys - The following chimneys may be used to vent a FSZ series boiler:
  - Listed Type L vent - Install in accordance with the manufacturer's instructions, the terms of its listing, and applicable codes.
  - Masonry Chimney - The masonry chimney must be constructed in accordance with the latest edition of *Standard for Chimneys, Fireplaces, Vents, and Solid Fuel Burning Appliances* (NFPA 211) and lined with a clay liner or other listed lining system. Do not vent a FSZ series boiler into an unlined chimney.
- 2) Acceptable Vent Connectors - The following may be used for vent connectors:
  - Listed Type L vent.
  - Single Wall Galvanized Pipe - Use 0.018" (26 gauge) or heavier.
- 3) Chimney and Vent Connector Sizing - See Table 7.1 for minimum vent connector and chimney sizing. The vent connector size must not be smaller than boiler flue collar diameter.
- 4) Do not vent this appliance into any portion of a mechanical vent system operating under positive pressure.
- 5) Do not connect the boiler into a chimney flue serving an open fireplace or other solid fuel appliance.
- 6) Prior to boiler installation, an existing chimney must be inspected by a qualified person in accordance with the requirements of Chapter 11 of NFPA 211, *Standard for Chimneys, Fireplaces, Vents, and Solid Fuel-Burning Appliances*. This inspection is intended to identify safety problems with the chimney such as obstructions, a missing or damaged liner, or leak points. Clean chimney as necessary and correct any other chimney defects before installing the boiler.
- 7) Vent connector must slope upward from boiler not less than one inch in four feet. No portion of vent pipe should run downward or have sags. Vent connector must be securely supported.
- 8) The vertical section of vent connector coming off the boiler should be as tall as possible, while still maintaining the proper clearance from the horizontal vent connector to combustibles and the proper pitch called for in (7) above.
- 9) Vent connector must be installed above the bottom of the chimney to minimize risk of blockage.

- 10) Vent connector must be inserted flush with inside face of the chimney liner and the space between vent connector and chimney sealed tight. A thimble permanently cemented in place can be used to facilitate removal of vent connector for cleaning.
- 11) Install the barometric draft regulator supplied with this boiler in accordance with the regulator manufacturer's instructions. No other draft regulator shall be used.
- 12) Secure all joints in the vent connector system with sheet metal screws. This includes the joint between the vent connector and the boiler collar (see Figure 7.0, Detail 'A'), as well as the barometric draft regulator. Use at least three screws at each joint.



**TABLE 7.1: MINIMUM RECOMMENDED BREECHING AND CHIMNEY SIZE**

BOILER MODEL	MINIMUM BREECHING DIA. (INCHES)	MINIMUM CHIMNEY REQUIREMENTS		
		ROUND I.D. (IN.)	SQUARE. TILE SIZE (NOMINAL)	HEIGHT (FT.)
FSZ080	6	6	8 X 8	15
FSZ100	6	6	8 X 8	15
FSZ130	6	7	8 X 8	15
FSZ160	7	7	8 X 8	15

## VIII System Piping



### WARNING

- Install boiler so that the electrical components are protected from water (dripping, spraying, rain, etc.) During appliance operation and service (circulator replacement, etc.).
- Operation of this boiler in a system having significant amounts of dissolved oxygen can cause severe heat exchanger corrosion damage.
- Do not use toxic additives, such as automotive antifreeze, in a hydronic system.
- Pipe safety valve discharge to a safe location. The safety valve may discharge steam or scalding hot water.
- Do not install a valve in the safety valve discharge line.
- Do not move safety valve from factory location.
- Do not plug safety valve discharge. Blocking the safety valve may result in boiler explosion.

Figure 8.1 shows recommended near boiler piping for most common types of gravity return steam systems. Additional information on steam system design may be found in the *I=B=R Guide RHH* published by the Air-Conditioning, Heating and Refrigeration Institute (AHRI).

One of the primary purposes of this near boiler piping is to separate tiny water droplets from the steam exiting the boiler so that “dry” steam is sent to the system. If the near boiler piping is not correct, wet steam will enter the system and the following problems may occur:

- Short cycling on low water
- Boiler or system Flooding
- Hammering
- Failure to heat one or more radiators

Avoid the common piping mistakes shown in Figure 8.2. This applies even if the existing boiler has one of the piping mistakes shown in Figure 8.2 and appears to be working. If two or more steam mains must be connected to the boiler, connect a separate take-off for each main into the header between the riser(s) and equalizer. Also note the following points:

- 1) A size reduction must be made to connect the header to the equalizer. This reduction must be made in the vertical equalizer line. Do not make this size reduction in the horizontal header.
- 2) One-pipe steam systems require air vents on each radiator, as well as at the end of each main. For the system to work properly, these vents must be properly installed, sized, and be in good condition. Inspect and replace any defective vents. If there are no vents at the ends of the mains, install them.
- 3) Do not attempt to manifold multiple FSZ boilers with gravity returns.
- 4) For installations with condensate or boiler feed pumps, follow the pump manufacturer’s piping instructions. Such systems generally do not require Hartford loops.
- 5) Do not use a check valve in place of, or in addition to, a Hartford loop on a gravity return system.
- 6) Pipe the fill connection from a clean source of cold water. When the water supply is from a well, make sure that a strainer is installed in the well system.
- 7) The “drop header” arrangement shown as “Alternate Piping Method” in Fig 8.1 is useful when there is limited vertical clearance above the boiler.

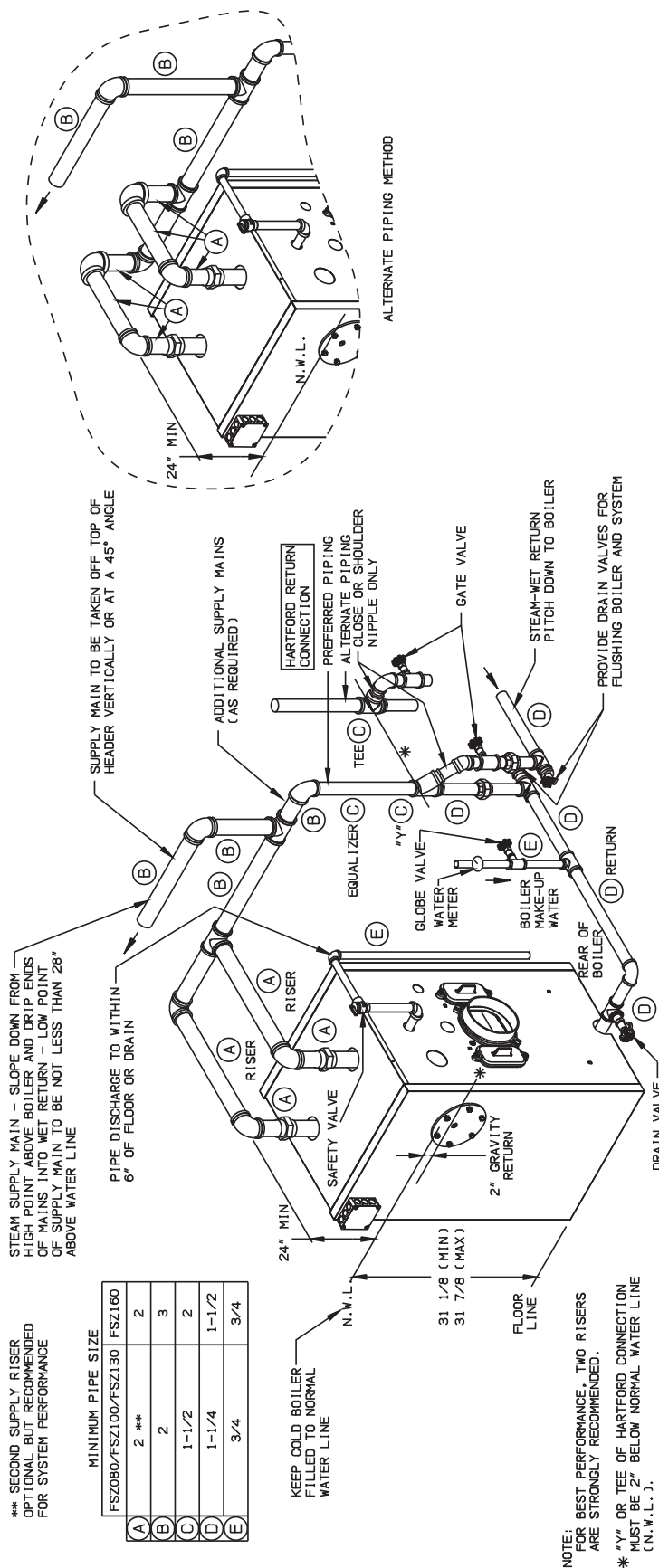
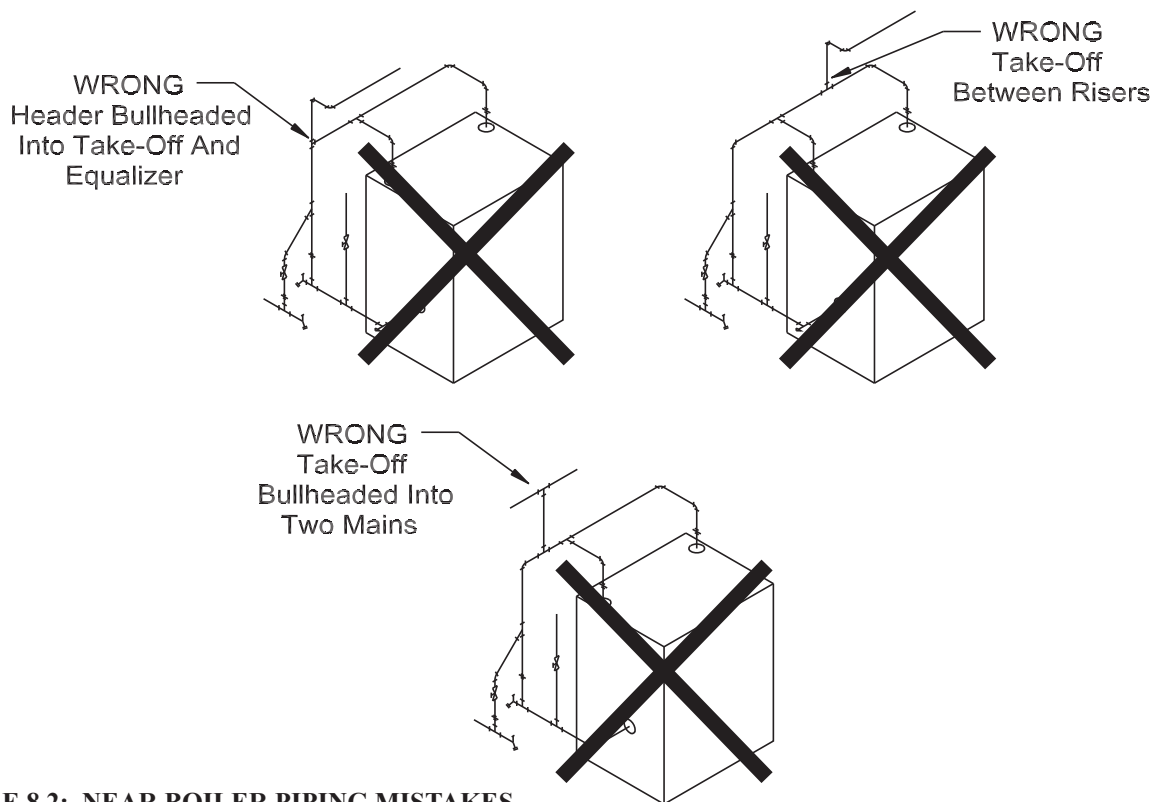


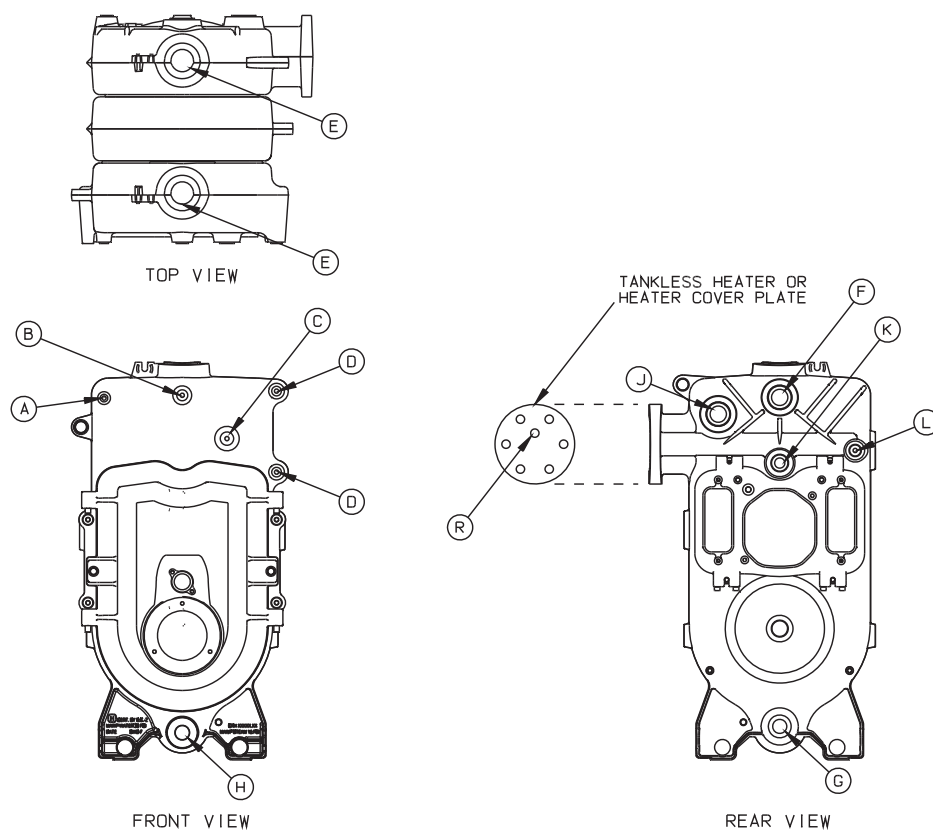
FIGURE 8.1: STEAM BOILER PIPING FOR GRAVITY RETURN



**FIGURE 8.2: NEAR BOILER PIPING MISTAKES**

### Piping Installation

- 1) Remove parts bag from boiler crate.
- 2) Install safety valve as shown in Figure 8.1 into the 3/4" tapping "F" on rear of the boiler (spindle must be in vertical position).
- 3) Pipe the discharge of the safety relief valve to a location where water or steam will not create a hazard or cause property damage if the valve opens. The end of the discharge pipe must terminate in an unthreaded pipe. If the safety valve discharge is not piped to a drain, it must terminate at least 6 inches above the floor. The termination of the safety valve discharge piping must be in an area where it is not likely to become plugged by debris or subjected to freezing.
- 4) Install drain valve provided into the return piping. See Figure 8.1.
- 5) Connect system supply and return to boiler. See Figure 8.1.



**FIGURE 8.3: PURPOSE OF TAPPINGS AND BOSSES**

**TABLE 8.4 PURPOSE OF TAPPINGS**

Tapping Location	Size (NPT)	Steam Boiler	
		Less Heater	With Heater
A	1/4"	Pressure Gauge	
B	1/4"	Pressure Limit	
C	3/4"	Probe LWCO	
D	1/2"	Water Gauge Glass	
E	2"	Supply (Front & Rear Tappings)	
F	3/4"	Safety Valve	
G	1-1/2"	Condensate Return (Reduced to 1-1/4" on FSZ080,100 & 130)	
H	1-1/4"	Optional Front Return (Plugged)	
J	1-1/2"	Surface Blowoff (Plugged)	
K	1"	Indirect Water Heater Supply (Plugged)	
L	1/2"	Indirect Water Heater Limit (Plugged)	
R	1/2"	L4006 Operating Control	Plugged

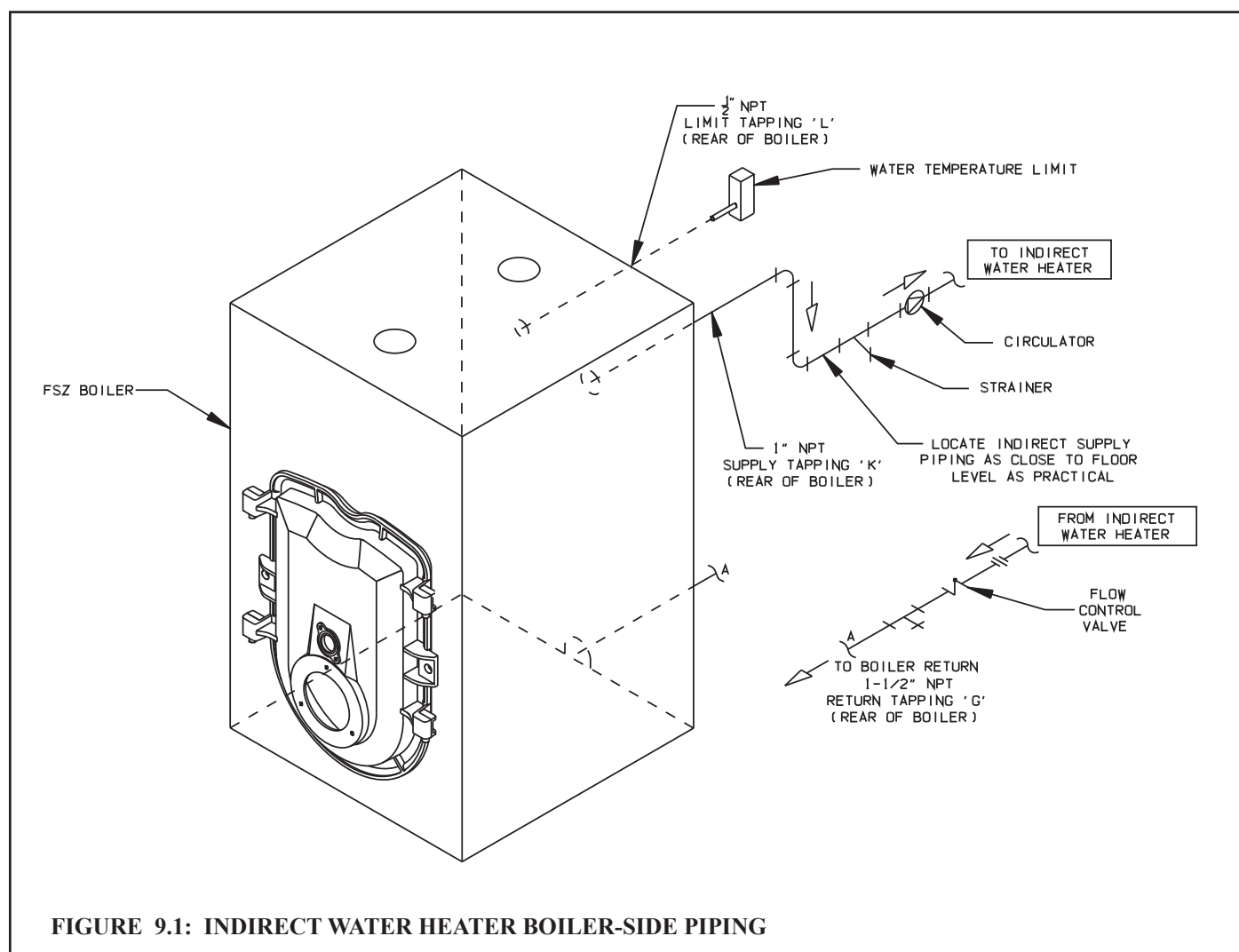


# IX INDIRECT & TANKLESS WATER HEATER PIPING

## INDIRECT WATER HEATER PIPING

All FSZ series boilers are equipped with tapings to permit the connection of a Crown Mega-Stor, or other indirect water heater. In this type of system, hot boiler water is drawn from below the water line and passed through the heat exchanger in the indirect water heater. This section describes boiler-side piping only. Refer to the indirect water heater instruction manual for domestic water piping. The components in this system and their functions are as follows:

- 1) Circulator - Mount the circulator as shown in Figure 9.1. The circulator should be located as low and as close to the boiler as practical. Do not install valves, or other devices having a significant pressure drop between the boiler and the circulator inlet. All piping between the boiler and the circulator inlet should be 1", regardless of the size of the piping required in the rest of the system. See Figure 11.2 in Part XI for wiring information.
- 2) "Y" Strainer - Install a "Y" strainer to prevent sediment from accumulating inside the indirect water heater.
- 3) Check Valve - Prevents gravity circulation through the indirect water heater when the boiler is responding to a call for heat.
- 4) Boiler Limit Control - Use a SPST break-on-rise temperature limit control such as the Honeywell L4006A. Do not set the limit above 180F as doing so may cause the boiler to steam when there is no call for heat. See Figure 11.2 for wiring information.
- 5) Valves and Unions - Install shut-off valves, drain valves, and unions in locations that will facilitate maintenance of the system. Do not install any valves between the boiler and circulator inlet.



## NOTICE

- Some indirect water heaters may not be suitable for use with a steam boiler. Consult the water heater manufacturer's guidelines before installing it in this type of system.
- Boiler water temperatures and flow rates in this type of system may be considerably lower than those upon which the water heater manufacturer's ratings are based. This may result in substantially longer water heater recovery times.

## TANKLESS HEATER PIPING

FSZ Series boilers equipped with tankless heaters are supplied with a Honeywell L4006A limit control and a 1/2" NPT well. These components are shipped unmounted. This control is mounted in the 1/2" tapping "R" in the center of the tankless coil.

Make the piping connections to the coil before installing the L4006A, making sure that these connections are routed so that they will not interfere with the L4006A.

Pipe the heater as shown in Figure 9.2. The components in this system and their functions are as follows:

- 1) Tempering Valve (Required) - During the heating season, the water exiting the tankless heater may be 180 degrees or more. The mixing valve blends hot water leaving the tankless heater with cold water so as to maintain the hot water supplied to the fixtures at a fixed temperature. This saves energy, increases the amount of usable hot water available to the homeowner, and reduces the risk of scalding.

Install a mixing valve with a setting range of approximately 110 to 130F. Follow the manufacturer's instructions for installing this valve. Usually a "heat trap" will be required between the coil and the "hot" connection on the mixing valve.



## DANGER-SCALD HAZARD

**The control supplied with this boiler is not intended to provide accurate control of the domestic water temperature leaving the tankless heater. An installer supplied, ASSE 1017 or ASSE 1070 certified tempering valve is therefore REQUIRED as part of this boiler's installation.**

- **Select, and install tempering valve in accordance with the valve manufacturer's instructions and applicable local codes. In the absence of such codes follow the Uniform Plumbing Code (IAPMO/UPC-1). Also note that additional tempering valves may be required at the fixtures themselves.**
- **Adjust low limit and tempering valve to the lowest practical setting.**
- **Feel water before showering or bathing.**

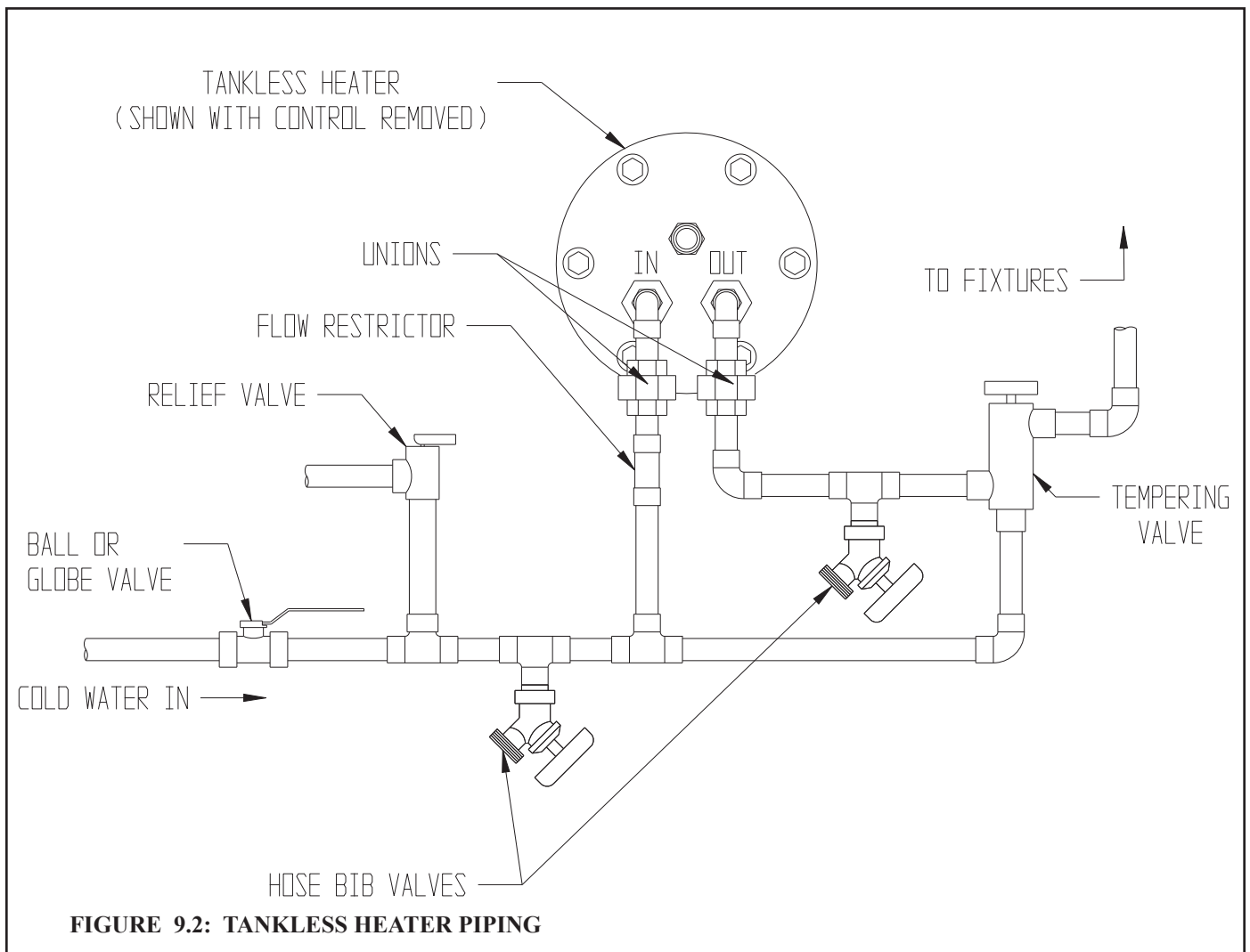
- 2) Flow Restrictor (Recommended) - If water is drawn from the tankless coil at a rate in excess of the rating in Table 2.3, the temperature of the hot water may be too low to be of use. The use of a flow restrictor will prevent this problem by limiting the rate at which water can pass through the tankless heater. If a restrictor is used, select one having a rating in GPM approximately equal to the rating shown in Table 2.3. If possible, locate this restrictor at least 3 feet from the tankless heater inlet so that it is not subjected to excessive temperatures when no water is flowing through the coil.

- 3) Pressure Relief Valve (Required) - Limits the pressure in the tankless heater and piping. Use an ASME constructed valve designed for domestic water service, such as the Watts #3L. Note that this is a pressure relief valve, not a T&P valve. Select a valve with a pressure setting less than or equal to the working pressure marked on the tankless coil. Pipe the discharge to a safe location using piping the same size as the discharge connection on the valve.

- 4) Hose Bib Valves (Recommended) - These valves permit the coil to be periodically "backflushed" to remove sediment.

- 5) Globe or Ball Valve (Recommended) - Used to adjust the flow through the entire tankless heater system if needed.

- 6) Unions (Required) - Tankless heaters may require periodic gasket replacement or other maintenance which requires removal of the heater from the boiler. Install unions anywhere in the tankless heater piping that will facilitate removal of the heater.



## X Fuel Line Piping



### WARNING

- Under no circumstances can copper with sweat style connectors be used.
- Do not use compression fittings.
- Oil piping must be absolutely airtight or leaks or loss of prime may result.
- Some jurisdictions require the use of a fusible shutoff valve at the tank and/or the burner. In addition, some jurisdictions require the use of a fusible electrical interlock with the burner circuit. Check your local codes for special requirements.

Fuel line piping design, materials and construction must be in accordance with local building codes, requirements of the local authority having jurisdiction, and, the latest edition of the Standard for the Installation of Oil-Burning Equipment (ANSI/NFPA 31) in the United States and CSA B139-04 for installation in Canada. Refer also to the instruction manuals provided with the burner and oil pump.

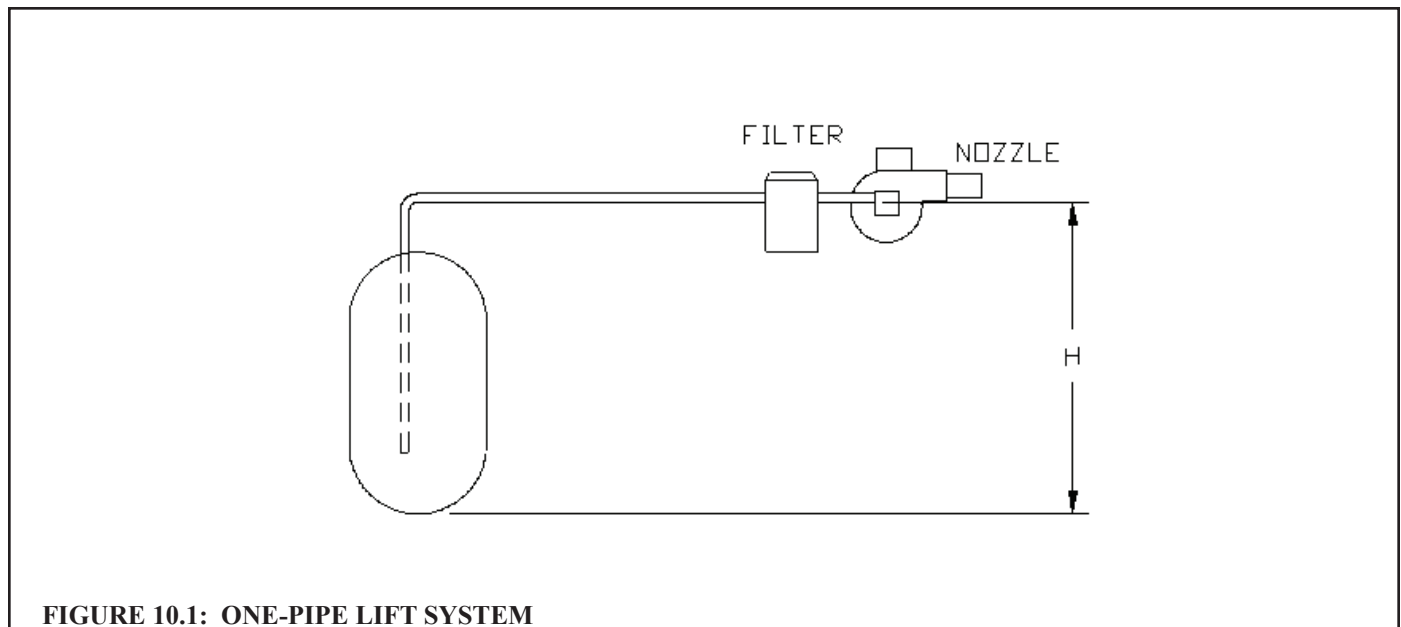
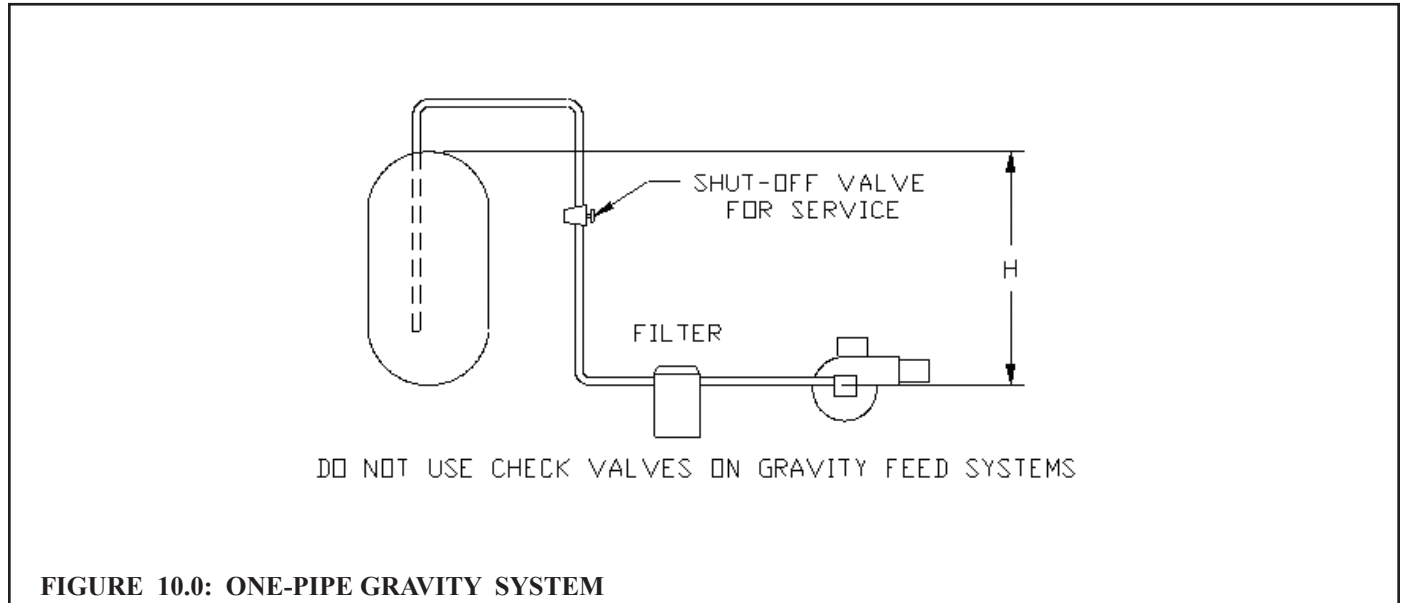
Depending on the location of the fuel oil storage tank in relation to an oil burner, there are four types of oil piping systems that may be encountered:

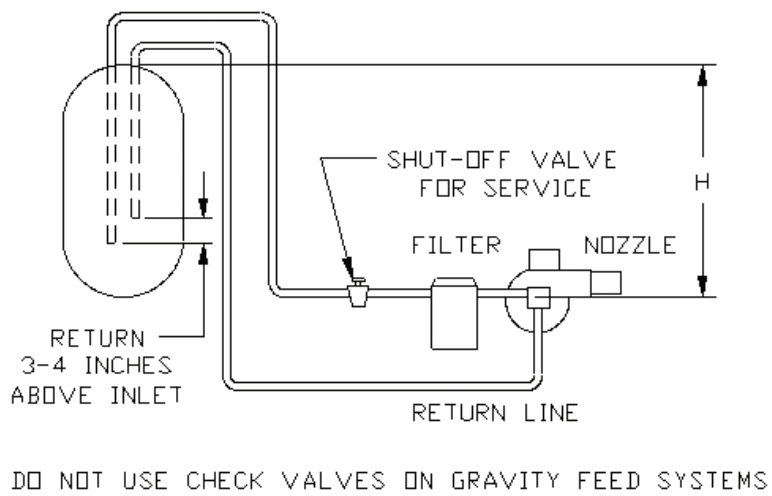
- a) ONE-PIPE GRAVITY SYSTEM - Used when a fuel oil storage tank is positioned above an oil burner fuel pump. See Figure 10.0. A vertical distance from top of the tank to center line of the pump (Dimension 'H') over 8 feet will result in a pump inlet pressure in excess of the 3-psi limit in NFPA-31.
- b) ONE-PIPE LIFT SYSTEM (not recommended) - Used when a fuel oil storage tank is located below an oil burner fuel pump. See Figure 10.1. The vertical distance from bottom of the tank to center line of the pump (Dimension 'H') must not exceed that shown in the pump manufacturer's instructions. Although all oil piping systems must be airtight, one-pipe lift systems are particularly susceptible to nuisance lockout problems if the suction line is not completely airtight. A two-pipe lift system is therefore preferred to a one-pipe lift system.
- c) TWO-PIPE GRAVITY SYSTEM (not recommended) - A vertical distance from top of the tank to center line of the pump (Dimension 'H') over 8 feet will result in a pump inlet pressure in excess of the 3-psi limit in NFPA-31. This type of system should be converted to a one-pipe gravity system, as doing so will result in lower inlet line flow and longer filter life. See Figure 10.2
- d) TWO-PIPE LIFT SYSTEM - Used when a fuel oil storage tank is located below an oil burner fuel pump suction port. See Figure 10.3. The vertical distance from bottom of the tank to center line of the pump (Dimension 'H') must not exceed that shown in the pump manufacturer's instructions. The maximum permissible distance 'H' allowed is reduced by the number of fittings, filters and valves installed in the line.

Once the type of system has been selected, observe the following:

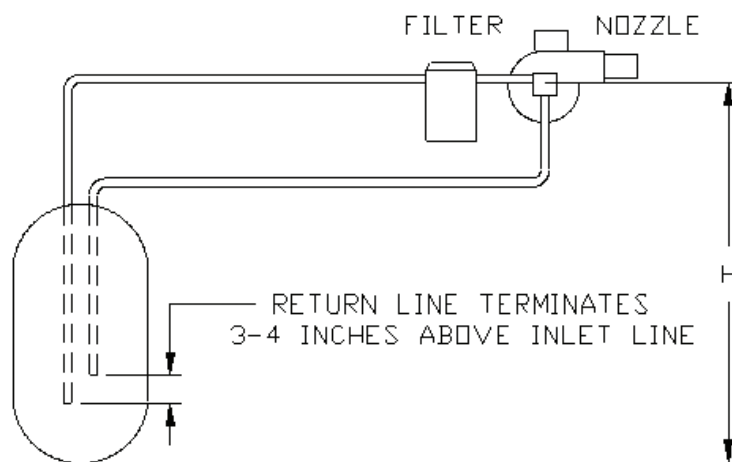
- 1) Fuel line piping must be airtight. Do not use compression type fittings for tubing connections in fuel line piping. Use only listed flare type fittings. Cast iron threaded fittings shall not be used.
- 2) Piping shall be substantially supported and protected against physical damage and corrosion.
- 3) Refer to supplied oil pump instruction manual for proper connections. On one-pipe systems, ensure that the fuel pump return port plug is tightened securely.
- 4) Some fuel pumps, such as the Suntec A and B series, are supplied with a loose bypass plug which must be installed on two-pipe systems. If such a plug is supplied, install it as shown in the pump manufacturer's instructions. Do not install this bypass plug on one-pipe systems as pump seal damage will result.
- 5) Do not use check valves, especially on gravity feed systems.
- 6) Do not use Teflon tape for threaded connections. Use a non-hardening thread sealant listed for use with #2 fuel oil .

- 7) Attach required piping between burner fuel pump and fuel oil storage tank. Install one fuel shut-off valve near the storage tank and second fuel shut-off valve near the oil burner fuel pump. Use a continuous run of copper tubing having a minimum wall thickness of 0.032". On two-pipe systems, the return line should terminate 3" - 4" above suction line depth within the storage tank. Refer to the pump manufacturer's instructions for tube sizing information.
- 8) Never install manual shut-off valves in the return piping of a two-pipe system.
- 9) Install a listed flexible oil line/s at the burner to facilitate opening of the boiler's swing door.
- 10) All systems require an oil filter. Use of a high efficiency micron filter (Garber or equivalent) in addition to a conventional filter is highly recommended, particularly on the FSZ080.
- 11) Use only #2 Fuel Oil with physical and chemical characteristics meeting the requirements of ASTM D-396.





**FIGURE 10.2: TWO-PIPE GRAVITY FEED SYSTEM (NOT RECOMMENDED)**



**FIGURE 10.3: TWO-PIPE LIFT SYSTEM**

## XI Wiring



### WARNING

- All wiring and grounding must be done in accordance with the authority having jurisdiction or, in the absence of such requirements, with the *National Electrical Code (ANSI/NFPA 70)*.
- Disconnect electrical power to the boiler and heating system before servicing. Positively assure that no voltage is present. Lock electrical boxes to prevent someone from inadvertently restoring power before the heating system is safe to operate.
- Never defeat or jump out safety devices.
- Protect each boiler circuit with a properly sized over-current protection device.
- Make electrical connections carefully according to the boiler's wiring diagram and instructions.
- Wire additional field supplied safety limits, such as low water cutoffs and temperature limit devices, in series with the 120V circuit used to power the boiler. Do not alter the boiler's factory wiring when adding an additional limit device.

- 1) 120 Volt Wiring - The boiler should be provided with its own 15A branch circuit with fused disconnect. 120VAC power connections are made inside the junction box on the right side of the boiler as follows (also see Figures. 11.0 and 11.1):
  - Connect Hot ("black") to black pigtail in junction box.
  - Connect Neutral ("white") to white pigtail in junction box.
  - Connect Ground ("green" or bare) to green pigtail in junction box.
- 2) Install R8285D Control – The R8285D ("transformer/relay") control is shipped loose inside the accessory carton. Connect the plug on the back of this control into the receptical inside the junction box and mount the R8285D on the junction box as shown in Figure 2.3.
- 3) 24 Volt Thermostat Wiring - Connect to a 24 volt heating thermostat to Terminals R and G on the R8285 (Figure 11.1). Follow thermostat manufacturer's instructions. To insure proper thermostat operation, avoid installation in areas of poor air circulation, hot spots (near any heat source or in direct sunlight), cold spots (outside walls, walls adjacent to unheated areas, locations subject to drafts). Provide Class II circuit between thermostat (or zone controls) and boiler.
- 3) Optional Tankless Heater Wiring - Route the wire harness from this control to the "R" and "G" (thermostat) terminals on the R8285D control so that they are in parallel with the space heating thermostat (Figure 11.1).



## Indirect Water Heater Wiring

Figure 11.2 shows field wiring for an indirect water heater. A Honeywell R845A or equivalent DPST relay and transformer is required. The high limit described in Part VIII must also be supplied by the installer. A call for heat from the indirect water heater thermostat will energize the relay making both sets of contacts. One set of these contacts then energizes the circulator. The other set of contacts will make the “R” and “G” contacts on the R8285D control, firing the burner. If the boiler water temperature exceeds the high limit setting of 180F, the high limit will open the “R” - “G” circuit and the burner will shut down.

If there is a call for space heat, the heating thermostat will make the “R”-“G” circuit and the boiler will fire without regard to the status of the indirect water heater. The low water cut-off and pressure limit control will interrupt 120 volt power to the burner in the event of a low water or excessive pressure condition.

### Feeder Wiring for Boilers Equipped with Hydrolevel CG450 Low Water Cut-offs

1) Using Hydrolevel VXT-120 feeder - Do not alter factory boiler wiring. Connect VXT-120 to CG450 as follows:

- Connect the **BLACK** lead on the feeder to terminal **A** on the CG450.
- Connect the **WHITE** lead on the feeder to terminal **2** on the CG450.

### CAUTION

- When making low voltage connections, make sure that no external power source is present in the thermostat circuits. If such a power source is present, it could destroy the boiler's control. One example of an external power source that could be inadvertently connected to the low voltage connections is a transformer in old thermostat wiring.
- Do not use the transformer provided on the boiler to power external devices such as zone valves. Doing so may cause damage to the transformer.

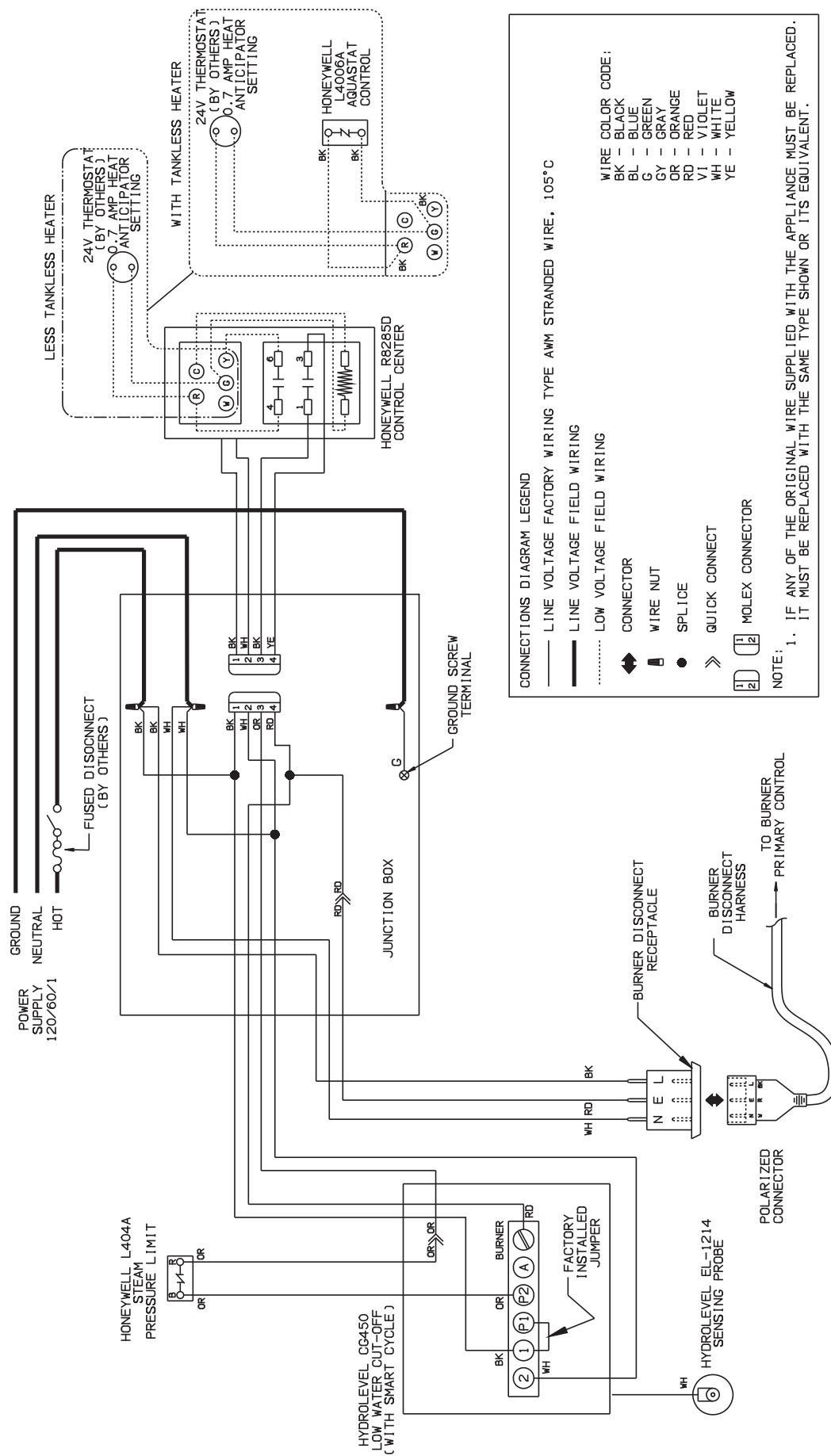
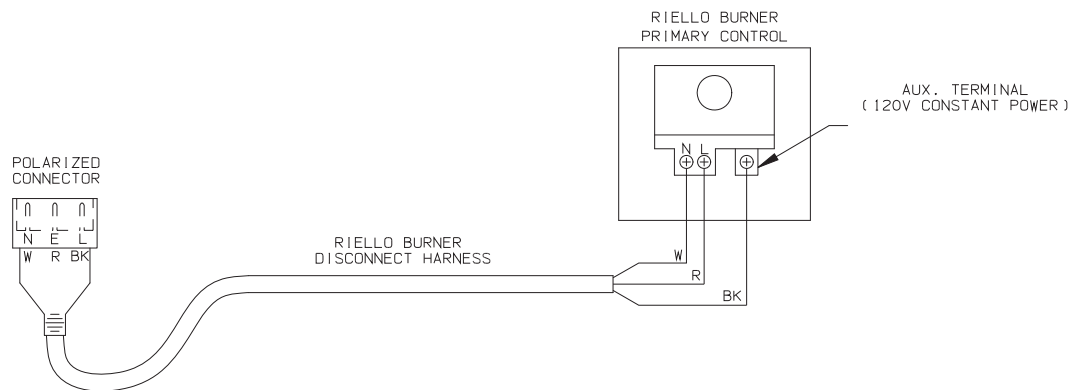
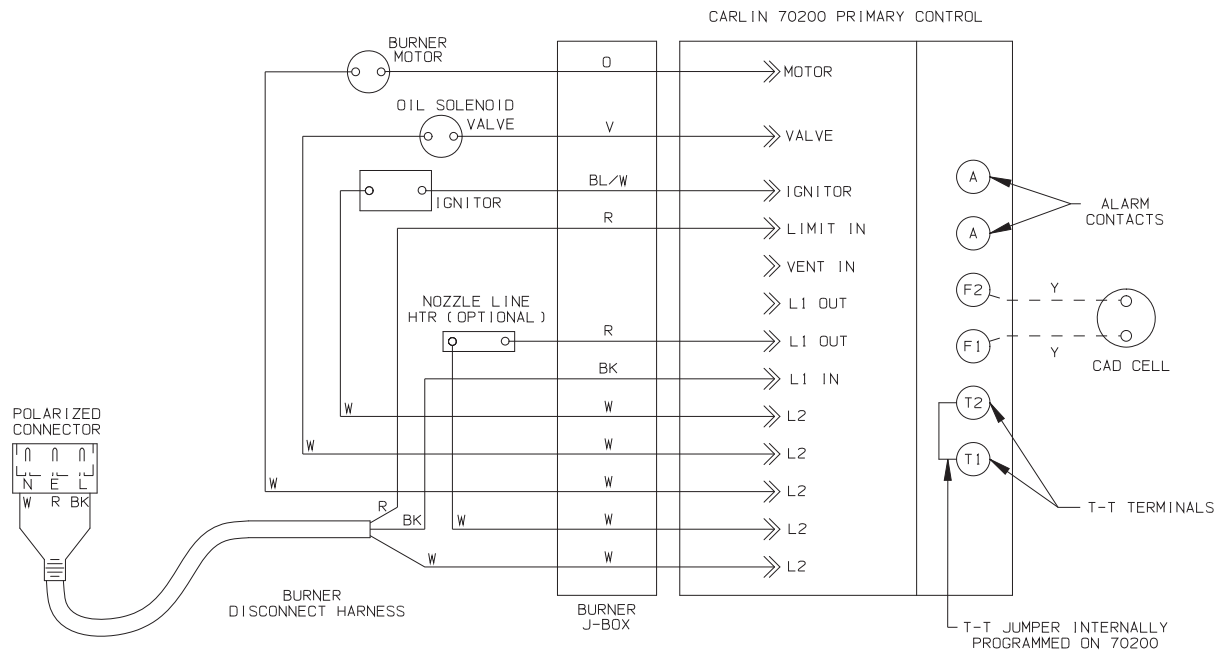
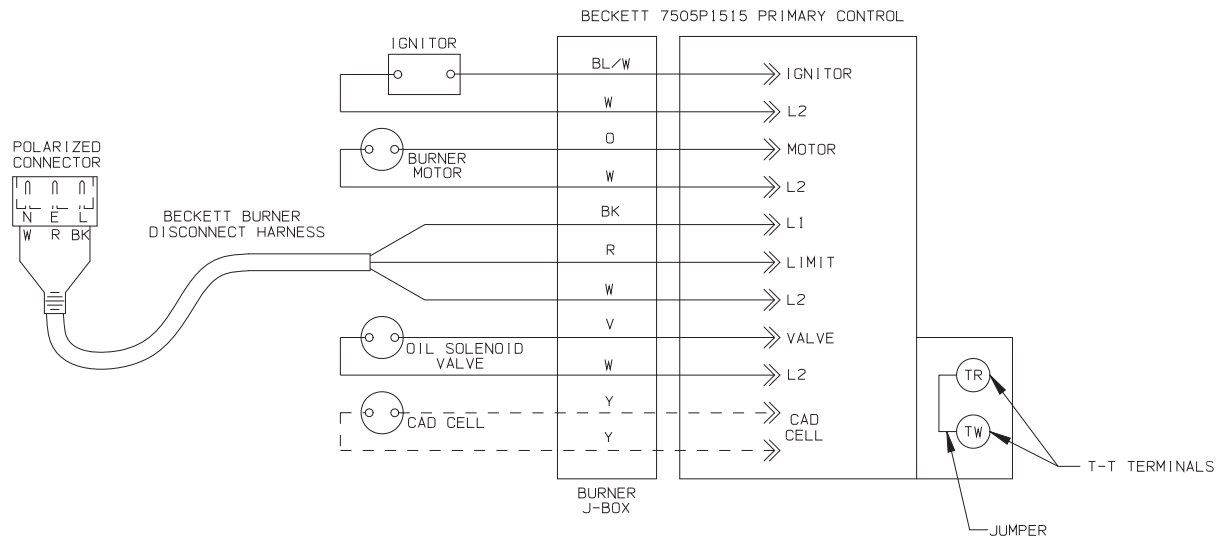
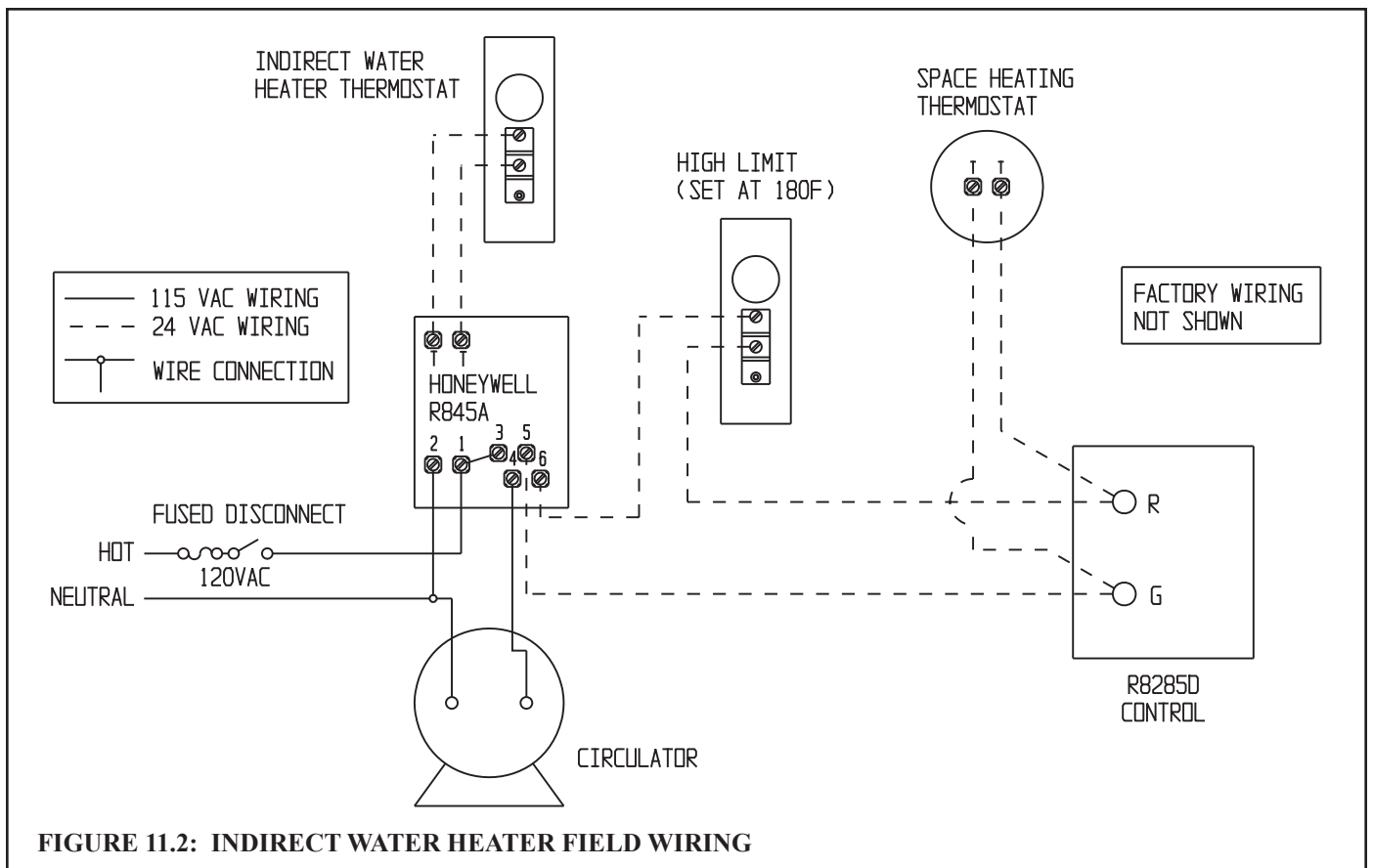


FIGURE 11.0: WIRING CONNECTIONS DIAGRAM, STEAM, CG450 PROBE LWCO



**FIGURE 11.1: CONNECTIONS WIRING DIAGRAM FOR BURNER SPECIFIC PRIMARY CONTROL**



**FIGURE 11.2: INDIRECT WATER HEATER FIELD WIRING**

## XII Start-up and Checkout

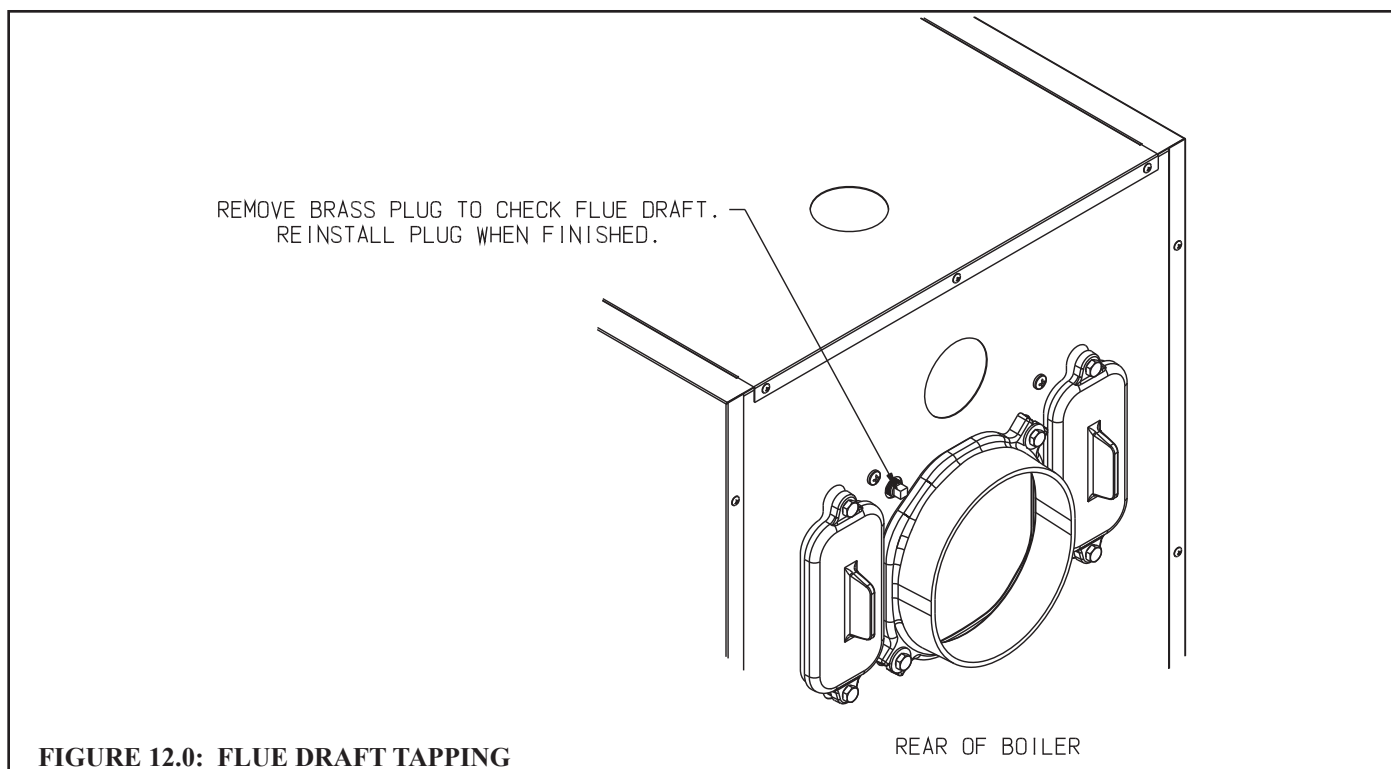


### WARNING

- Never attempt to fill a hot empty boiler.
- Make sure that the area around the boiler is clear and free from combustible materials, gasoline, and other flammable vapors and liquids.
- Safe reliable operation of this boiler requires that the burner be checked and adjusted by a qualified oil serviceman using combustion test instruments.
- Failure to perform all of the checks outlined in the following procedure could result in unreliable operation, damage to the boiler not covered under warranty, property damage, or unsafe operation.
- All boilers equipped with burner swing door have a potential hazard which can cause severe property damage, personal injury or loss of life if ignored. Before opening swing door, turn off service switch to boiler to prevent accidental firing of burner outside the combustion chamber. Be sure to tighten swing door fastener completely when service is completed. In addition, the burner power cord will have to be disconnected from the receptacle in the front jacket.

Use the following procedure for initial start-up of the boiler:

- 1) Ensure that the boiler is filled to the normal water level.
- 2) Verify that the vent system is properly installed and free of obstructions prior to start-up of the boiler. Refer to Section VII for more information.
- 3) Inspect all wiring for loose or uninsulated connections, proper size fuses installed, etc.
- 4) Verify that oil tank is filled with #2 fuel oil meeting ASTM D396 specifications, oil piping has been tested and is air tight, and shutoff valve(s) are closed.
- 5) Check initial settings of oil burner air band and air shutter, head setting etc., and readjust if needed. See Table 12.1 for setup and combustion data pertaining to a particular boiler/ burner combination.
- 6) Ensure the burner is tightly secured to the burner swing door creating an airtight seal.
- 7) Attach plastic hose to oil pump vent fitting and provide a container to catch oil during oil pump bleeding procedure.
- 8) Install 0-200 PSI pressure gauge into oil pump gauge port.
- 9) Open all oil line shutoff valves.
- 10) Open flame observation port cover on burner swing door to see flame.
- 11) Adjust system thermostat to highest setting.
- 12) Set pressure limit control to suit individual requirements of the installation. For most systems, the cut-in pressure should be set at 0.5 psi with a 1 psi differential.
- 13) Turn the line service switch to "ON" position.
- 14) Crack open vent fitting on the oil pump and allow burner to run until a solid oil stream, free of air bubbles, flows for 15 seconds into container. As the vent fitting is closed, the burner should fire and flame should be visible through observation port immediately (or after prepurge timing has expired, if a burner is so equipped). Refer to burner instructions for more details.
- 15) Immediately upon firing the boiler, check the smoke level. If the smoke level is in excess of a #1, open the air adjustment to bring the smoke level below a #1.
- 16) Make sure that the oil pressure matches that shown in Table 12.1 for the burner supplied. Adjust pressure if required.



**FIGURE 12.0: FLUE DRAFT TAPPING**

- 17) Check the vacuum at the inlet of the fuel pump. Make sure that the vacuum does not exceed the fuel pump manufacturer's limit (consult the pump manufacturer's instructions).
- 18) Close the flame observation cover.
- 19) After chimney has warmed-up for at least 5 minutes, adjust barometric draft regulator to obtain a draft at the 1/4" tapping shown in Figure 12.0 that is within the range shown in Table 12.1. DRAFT AT THIS LOCATION MUST NEVER BE POSITIVE.
- 20) Check the CO<sub>2</sub> and confirm that it is between the minimum and maximum limits shown in Table 12.1. Adjust if necessary.
- 21) Verify that the smoke level still does not exceed #1 and that the draft in the breech is still within the range prescribed by Table 12.1.
- 22) Turn off the burner and remove pressure gauge. Install and tighten gauge port plug, then restart the burner.
- 23) Check for clean cutoff of the burner. Air in the oil line between fuel pump and nozzle will compress, while burner is running, and expand, when burner shuts off, causing oil line pressure to drop and nozzle drip after burner stops. Cycle burner on and off 5 to 10 times to purge air completely.
- 24) Check thermostat operation by raising or lowering its set point as required, cycling burner on and off.
- 25) Verify primary control operation and safety features according to procedure outlined in the instructions furnished with the burner.
- 26) Check pressure limit control operation. Jump thermostat terminals and allow burner to run until boiler pressure exceeds cut-in pressure plus the differential. The burner should shut down.
- 27) Check low water cut-off operation. With the thermostat still jumped, fire the boiler and crack the boiler drain valve so that water is slowly drained from the boiler. Confirm that the burner shuts down before the water level drops below the bottom of the sight glass. **Do not permit the boiler to fire without water visible in the sight glass.** Add water to the boiler and confirm that the burner restarts. Remove thermostat jumper and reconnect thermostat upon check completion.
- 28) After the boiler has operated for approximately 30 minutes, check the boiler and heating system for leaks. Repair any leaks found at once.
- 29) After the above checks have been completed, leave thermostat(s) at desired setting. Leave all instructions provided with

the boiler with owner or in boiler room, displayed near boiler.

30) After new boiler has been installed and put into continuous operation for several days, clean the boiler of oil, grease, sludge, and other contaminants that may have been present in existing piping. This will prevent unsteady water line and water carry over into supply main. The boiler boil-out should be done as follows:

- a) Turn off the burner.
- b) Drain water from boiler until about one inch of water is visible in gauge glass.
- c) Run a hose or temporary piping from the boiler drain valve to a location where hot water can be safely discharged. Drain approximately five gallons of water from the boiler and mix-in an appropriate amount of an approved boil-out compound. Remove safety valve and refill the boiler with prepared solution through funnel. Replace safety valve.
- d) Run a hose or temporary piping from the 1-1/2" skimmer tap on the upper rear section to a location where hot water can be safely discharged.
- e) Start the burner. Run boiler for several hours, boiling the water, without generating steam pressure. Open the water feed valve sufficiently to allow a slight overflow of water through the skimmer tapping drain line. Continue boiling until water coming out is clear.
- f) Turn off the burner. Drain hot water from boiler through boiler drain valve to a location where hot water can be safely discharged. Refill the boiler to normal water line level. If water in the gauge glass does not look clear, repeat above boil-out procedure again until water clears out.
- g) Reinstall safety valve and related piping.
- h) Conduct pH and Alkalinity test of water in the system. The pH reading should be in 7 to 11 range.

#### ***NOTICE***

When substantial amount of make-up water is used due to lost condensate, or when make-up water is hard or corrosive, water treatment is required. Contact qualified water treatment company for recommended water treatment compounds and procedure.



#### **WARNING**

Attempts to use burners or burner configurations other than those shown in Table 12.1 could result in reliability problems, property damage, personal injury or loss of life



**TABLE 12.1a: BECKETT BURNER CONFIGURATION AND SETUP DATA**

BOILER MODEL	FSZ080	FSZ100	FSZ130	FSZ160
BURNER MODEL	AFG	AFG	AFG	AFG
AIR TUBE COMBO	70MMAQN	70MMAQN	70MLASN	70MLASN
HEAD TYPE	L1	L1	V1	V1
STATIC PLATE	3-3/8U	3-3/8U	NONE	2-3/4M
LOW FIRING RATE BAFFLE	Beckett Silver (5880)	NONE	NONE	NONE
INSERTION LENGTH	2.0	2.0	2.0	2.0
PITCH ANGLE	0	0	0	0
STANDARD NOZZLE	DELAVAN .65 X 60A	DELAVAN .85 X 60B	DELAVAN 1.10 X 60B	DELAVAN 1.35 X 60B
PUMP PRESSURE (psi)	150	150	150	150
HEAD SETTING	FIXED	FIXED	0	1
STARTING: SHUTTER SETTING BAND SETTING	10 1	7 1	8 2	9 5
DRAFT IN FLUE (in w.c.)	0 to -0.02	0 to -0.02	0 to -0.02	0 to -0.02
MAX SMOKE (Bacharach Scale)	#1	#1	#1	#1
FLUE CO <sub>2</sub> (%) MIN. MAX.	11.5 12.8	11.5 12.8	11.5 12.8	11.5 12.8

**TABLE 12.1b: RIELLO BURNER CONFIGURATION AND SETUP DATA**

BOILER MODEL	FSZ080	FSZ100	FSZ130	FSZ160
BURNER MODEL	F3	F5	F5	F5
TURBULATOR DISK	5 SLOT	9 SLOT	9 SLOT	9 SLOT
COMBUSTION HEAD	VSBT	10" LBT	6" SBT	VSBT
STANDARD NOZZLE	DELAVAN .60 X 60A	DELAVAN .85 X 60B	DELAVAN 1.10 X 60B	DELAVAN 1.35 X 60B
INSERTION LENGTH	2.5	10	3.5	2.25
PUMP PRESSURE (psi)	175	145	150	145
TURBULATOR SETTING	3.0	2.0	4.0	4.0
AIR GATE SETTING	2.4	2.5	3.75	4.0
DRAFT IN FLUE (in w.c.)	0 to -0.02	0 to -0.02	0 to -0.02	0 to -0.02
MAX SMOKE (Bacharach Scale)	#1	#1	#1	#1
FLUE CO <sub>2</sub> (%) MIN. MAX.	11.5 12.8	11.5 12.8	11.5 12.8	11.5 12.8

**TABLE 12.1c: CARLIN BURNER CONFIGURATION AND SETUP DATA**

BOILER MODEL	FSZ080	FSZ100	FSZ130	FSZ160
BURNER MODEL	EZ1-LF	EZ1-LF	EZ1-LF	EZ-66
BLENDER	28 HOLE	NONE	NONE	NONE
CARLIN AIR TUBE NUMBER	50989	50989	50989	51198
STANDARD NOZZLE	DANFOSS 0.60 X 60AS	HAGO 0.75 X 60B	HAGO 1.00 X 45B	HAGO 1.35 X 45B
INSERTION LENGTH	2.62"	2.62"	2.62"	2.62"
PITCH ANGLE	1°	1°	1°	1°
PUMP PRESSURE (psi)	175	175	175	140
HEAD SETTING	2	2	3	5
STARTING AIR BAND SETTING	45%	35%	45%	60%
DRAFT IN FLUE (in w.c.)	0 to -0.02	0 to -0.02	0 to -0.02	0 to -0.02
MAX SMOKE (Bacharach Scale)	#1	#1	#1	#1
FLUE CO <sub>2</sub> (%)				
MIN.	11.5	11.5	11.5	11.5
MAX.	12.8	12.8	12.8	12.8

## **XIII Service and Maintenance**

### **A. Water Side Maintenance**

**The following procedure should be performed on an annual basis:**

- 1) Turn off electrical power and oil supply to the boiler.
- 2) Inspect the low water cut-off:
  - For Hydrolevel CG450 low water cut-offs - Remove and inspect the probe for scale and sediment buildup. Clean any sediment or scale from the probe with a scouring pad or steel wool. Consult the Hydrolevel CG450 manual for any additional maintenance information. Test the low water cut-off before placing the boiler back into service.
- 3) Allow the boiler to cool to room temperature and drain the boiler. Remove the 1-1/4" plug from the unused return tapping. Use a flashlight to inspect the bottom row of pushnipples for accumulated scale or mud. If a significant amount is present, use the following procedure to clean the inside of the heat exchanger:
  - a) Temporarily install a 1-1/4" inch or larger full port ball valve in place of the 1-1/4" plug. Temporarily pipe the outlet of this valve to a location where hot water and steam can be safely discharged.
  - b) Make sure that this valve is closed and that the water level is at the normal water line.
  - c) If a king valve is present in the steam main takeoff, close it. Alternatively, temporarily replace enough of the vents on the mains and/or radiators with plugs so that 2-5 psi can be developed when the boiler is fired.
  - d) Fire the boiler and allow it to steam until 2-5 psi is registered on the gauge.
  - e) Turn off the burner and immediately fully open the 1-1/4" valve.
  - f) Allow the boiler to blow down until either the water runs clear or the water level reaches the bottom of the gauge glass.
  - g) Allow all parts of the boiler to cool to room temperature. Drain the boiler completely and remove the 1-1/4" valve.
  - h) If significant mud or scale is still present in the bottom of the boiler, repeat steps (b) through (g) until all mud or scale is removed.
  - i) Once all mud or scale is removed, replace the 1-1/4" valve and temporary blow-down piping with the standard plug.
  - j) After all parts of the boiler are at room temperature, refill the boiler to the normal water line.

#### **NOTE**

A large accumulation of mud or scale in the bottom of the heat exchanger is usually a sign of excessive feedwater make-up. Such accumulations can cause severe heat exchanger damage. If mud or scale accumulations are found:

- Make sure that all vents are in working order. Vents should not permit any passage of steam or water.
- Check all steam and return piping for leaks. Be aware that buried return piping can leak and go undetected during normal operation.

#### **TANKLESS HEATER MAINTENANCE**

- During the warm months, make sure that the water level in the boiler is 30 to 31-1/2 inches above the surface on which the boiler is installed. Failure to do this may result in inadequate hot water and/or steaming when there is no call for heat.
- Maintain the mixing valve in accordance with the valve manufacturer's instructions.

## B. Fire Side Maintenance



### WARNING

All boiler cleaning must be completed with the burner service switch turned off. Boilers equipped with burner swing door have a potential hazard which can cause severe property damage, personal injury or loss of life if ignored. Before opening swing door, turn off service switch to boiler to prevent accidental firing of burner outside the combustion chamber. Disconnect the burner plug from the receptacle in the front jacket. Be sure to tighten the swing door fastener completely when service is completed.

The following procedure should be performed on an annual basis:

- 1) Turn off electrical power and oil supply to the boiler.
- 2) Clean the boiler as follows:
  - a) Remove the two 3/8" bolts from either side of the swing door and open the door to access the combustion chamber.
  - b) Remove the two smoke box clean-out covers from the rear smoke box by removing the four 5/16" bolts. It is not necessary to remove the vent connector from the smoke box to clean boiler however if there is heavy soot accumulation in the boiler remove the vent connector to inspect the base of the chimney for condensate or accumulation of debris.
  - c) Remove the baffles (if installed) from the flue passages.
  - d) Clean the 3rd Pass - Insert a 2" dia x 42" long wire or fiber bristle brush into one of the two 3rd flue passes. Using long strokes push the brush all the way through the boiler until the brush has exited the smoke box opening. Pull the brush all the way forward until it has exited the front of the boiler. Continue this operation for the entire height of the flue way until clean. Repeat the operation for the other 3rd pass flue way.
  - e) Clean the 2nd Pass - Insert a 2" dia x 42" long wire or fiber bristle brush into one of the two 2nd flue passes. Using long strokes push the brush all the way through the boiler until the brush hits the back wall of the reversing chamber. Pull the brush all the way forward until it has exited the front of the boiler. Continue this operation for the entire height of the flue way until clean. Repeat the operation for the other 2nd pass flue way.
  - f) Vacuum to loose debris in the bottom of the combustion chamber and smoke box
  - g) Clean the Combustion Chamber - Use a wire or fiber bristle brush to clean the surfaces of the combustion chamber. Vacuum all loose debris in the chamber.
  - h) Check condition of the burner swing door insulation and rope gaskets for signs of damage; replace if required.
  - i) Check burner head for signs of deterioration. Clean the head of any deposits.
  - j) Insert baffles (if originally installed) into the correct flueways.
  - k) Attach the smoke box clean-out covers onto the rear of the boiler using the 5/16" bolts originally removed. Verify that the rope gasket is in good order before assembly. Replace rope gasket if necessary. Do not over tighten. The bolts should be snug but not bottomed out.
  - l) Close the swing door and tighten it with the 3/8" bolts originally removed. When securing the burner swing door make sure the door is drawn-in equally on both sides by alternating the tightening method for right side to left side. Do not over tighten. The rope gasket will provide sufficient seal when door is snugged into place.

### IMPORTANT

Clean The Boiler Even If There Are No Significant Soot Deposits. Failure To Remove All Sulfur And Ash Deposits Annually Can Cause Severe Corrosion Damage.



## WARNING

The boiler must be connected to an approved chimney in good condition. Serious property damage could result if the boiler is connected to a dirty or inadequate chimney. The interior of the chimney flue must be inspected and cleaned before the start of the heating season and should be inspected periodically throughout the heating season for any obstructions. A clean and unobstructed chimney flue is necessary to allow noxious fumes that could cause injury or loss of life to vent safely and will contribute toward maintaining the boiler's efficiency.

- 3) Inspect the vent system:
  - a) Make sure that the vent system is free of obstructions and soot.
  - b) Make sure that all vent system supports are intact.
  - c) Inspect joints for signs of condensate or flue gas leakage.
  - d) Inspect venting components for corrosion or other deterioration. Replace any defective vent system components.
  - e) Ensure all vent piping joints are gas tight and secured with sheet metal screws.
- 4) Service the oil burner:
  - a) Replace oil nozzle with identical make and model (see Table 12.1).
  - b) Inspect the electrodes. Replace if they are deteriorated. Make sure that the electrode position is set according to the burner manufacturer's instructions.
  - c) Remove and clean fuel pump strainer.
  - d) Remove any accumulations of dust, hair, etc. from the air shutter, blower wheel, and other air handling parts of the burner.
  - e) Replace the fuel oil line filter element and gaskets.
- 6) Inspect all oil piping and fittings for kinks and leaks. Repair any found.
- 7) Inspect the hydronic piping and boiler for water leaks. Repair any leaks found immediately.
- 8) Verify operation of relief valve by manually lifting lever; replace relief valve immediately if valve fails to relieve pressure.
- 9) Open fuel line shut-off valve(s) and restore electrical power to the boiler.
- 10) Fire the boiler and check it out using the procedure outlined in "Start-up and Checkout". This must include checking the burner adjustments using instruments. Check for proper operation of all controls.



## WARNING

Water leaks can cause severe corrosion damage to the boiler or other system components. Repair any leaks found immediately.

## **Important Product Safety Information**

### **Refractory Ceramic Fiber Product**

#### **Warning:**

The Parts list designates parts that contain refractory ceramic fibers (RCF). RCF has been classified as a possible human carcinogen. When exposed to temperatures about 1805°F, such as during direct flame contact, RCF changes into crystalline silica, a known carcinogen. When disturbed as a result of servicing or repair, these substances become airborne and, if inhaled, may be hazardous to your health.

#### **AVOID Breathing Fiber Particulates and Dust**

#### **Precautionary Measures:**

Do not remove or replace RCF parts or attempt any service or repair work involving RCF without wearing the following protective gear:

1. A National Institute for Occupational Safety and Health (NIOSH) approved respirator
  2. Long sleeved, loose fitting clothing
  3. Gloves
  4. Eye Protection
- Take steps to assure adequate ventilation.
  - Wash all exposed body areas gently with soap and water after contact.
  - Wash work clothes separately from other laundry and rinse washing machine after use to avoid contaminating other clothes.
  - Discard used RCF components by sealing in an airtight plastic bag. RCF and crystalline silica are not classified as hazardous wastes in the United States and Canada.

#### **First Aid Procedures:**

- If contact with eyes: Flush with water for at least 15 minutes. Seek immediate medical attention if irritation persists.
- If contact with skin: Wash affected area gently with soap and water. Seek immediate medical attention if irritation persists.
- If breathing difficulty develops: Leave the area and move to a location with clean fresh air. Seek immediate medical attention if breathing difficulties persist.
- Ingestion: Do not induce vomiting. Drink plenty of water. Seek immediate medical attention.

## XIV Trouble Shooting

### A. Combustion

- 1) Nozzles - The selection of the nozzle supplied with the FSZ boiler is the result of extensive testing to obtain the best flame shape and efficient combustion. Other brands of the same spray angle and pattern may be used but may not perform at the expected level of CO<sub>2</sub> and smoke. Nozzles are delicate and should be protected from dirt and abuse. Nozzles are mass-produced and can vary from sample to sample. For all of those reasons a spare nozzle should be part of a serviceman's replacement parts inventory.
- 2) Flame Shape - As seen for the observation port, the flame should appear straight with no sparklers rolling up toward the crown of the chamber. If the flame drags to the right or left, sends sparklers upward or makes wet spots on the chamber walls, the nozzle should be replaced. If the condition persists look for fuel leaks, air leaks, water or dirt in the fuel as described below.
- 3) Fuel Leaks - Any fuel leak between the pump and the nozzle will be detrimental to good combustion results. Look for wet surfaces in the air tube, under the ignitor and around the air inlet. Any such leaks should be repaired as they may cause erratic burning of the fuel and in the extreme case may become a fire hazard.
- 4) Air Leaks - Any such leaks should be repaired as they may cause erratic burning of fuel and in extreme cases may become a fire hazard.
- 5) Gasket Leaks - If CO<sub>2</sub> readings between 11.5% and 12.8% with a #1 smoke cannot be obtained in the breeching, or if odors are observed, look for leaks around the burner mounting gasket, observation door and canopy gasket, or in the breeching below the point where the flue gas sample is taken. Air leakage into the boiler or breeching can cause low CO<sub>2</sub> readings (the lower the firing rate, the greater effect an air leak can have on CO<sub>2</sub> readings). Such leaks can also cause flue gas leakage into the building, resulting in odor complaints.
- 6) Dirt - The use of a fuel filter is good practice. Accidental accumulation of dirt in the fuel system can clog the nozzle or nozzle strainer and produce a poor spray pattern from the nozzle. The smaller the firing rate, the smaller the slots in the nozzle and the more prone to plugging it becomes.
- 7) Water - Water in the fuel in large amounts will stall the fuel pump. Water in the fuel in smaller amounts will cause excessive wear on the pump. More importantly it chills the flame and causes smoke and unburned fuel to pass through the combustion chamber and clog the flueways of the boiler.
- 8) Cold Oil - If the oil temperature near the fuel pump is 40°F or lower, poor combustion or delayed ignition may result. Cold oil is harder for the nozzle to atomize, thus the oil droplets get larger and travel further creating a longer flame. An outside fuel tank that is above grade or has fuel lines in a shallow bury is a good candidate for cold oil. The best solution is to bury the tank and lines deep enough to keep the oil above 40°F. Be sure to follow any state and local codes when burying fuel oil tanks and/or fuel oil lines.
- 9) Start-Up Noise - Delayed ignition is the cause of start-up noises. If it occurs recheck for electrode settings, flame shape, air or water in the fuel lines.
- 10) Shut Down Noise - If the flame runs out of air before it runs out of fuel, an after burn with noise may occur. That may be the result of a faulty cut-off valve in the fuel pump, or it may be air trapped in the nozzle line. It may take several firing cycles for that air to be fully vented through the nozzle. Water in the fuel or poor flame shape can also cause shut down noises.

### TEST PROCEDURE FOR FUEL SIDE PROBLEMS

A good test for isolating fuel side problems is to disconnect the fuel system and with a 24" length of tubing, fire the burner out of an auxiliary five gallon pail of clean, fresh, warm #2 fuel oil from another source. If the burner runs successfully when drawing out of the auxiliary pail then the problem is isolated to the fuel or fuel lines being used on the installation.

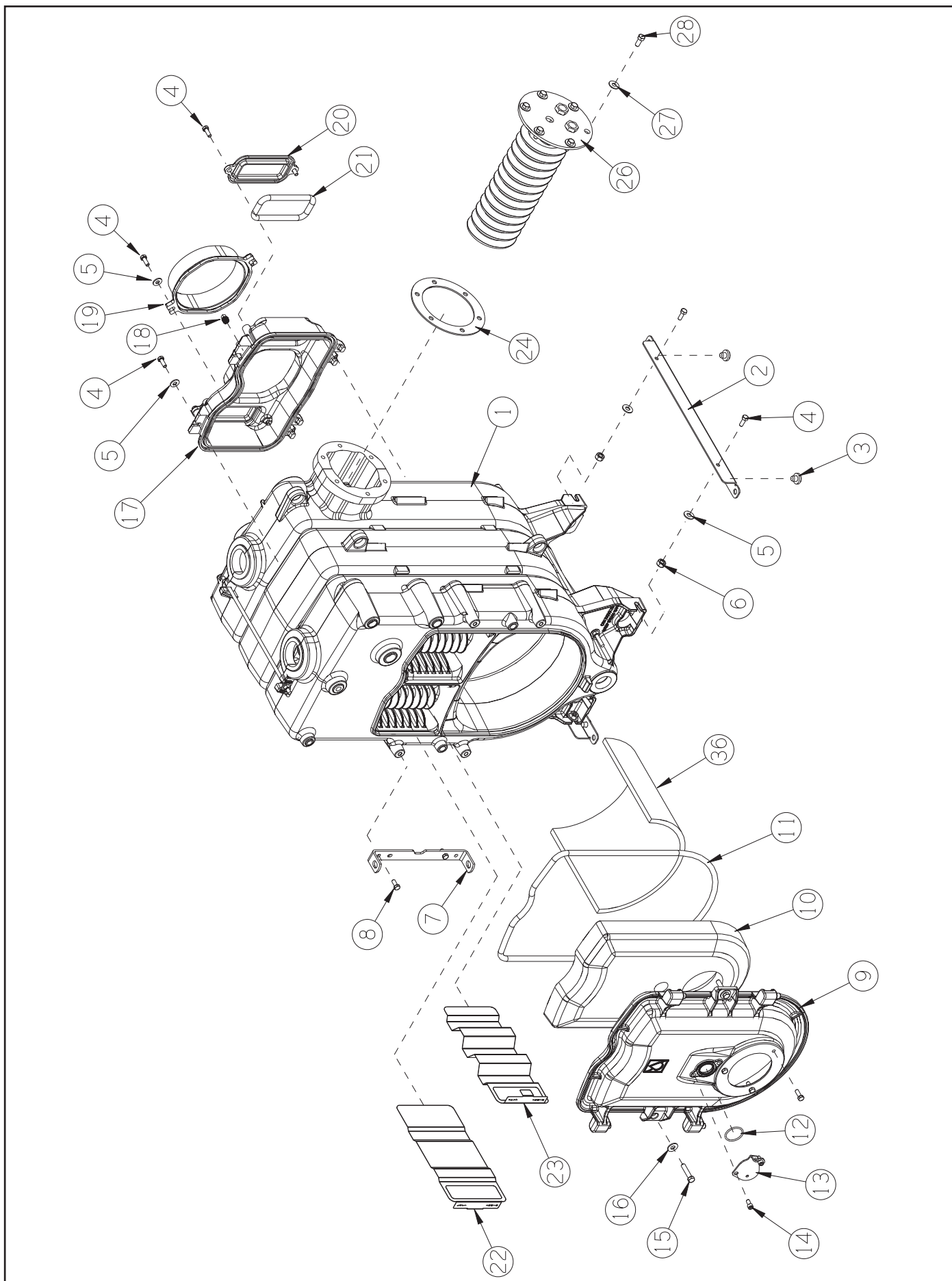
## XV Parts

KEY #	DESCRIPTION	QTY. OR CROWN PN	QUANTITY PER BOILER OR CROWN PART NUMBER			
			FSZ080	FSZ100	FSZ130	FSZ160
1	HEAT EXCHANGER ASSEMBLY WITH HEATER OPENING	1	420013	420013	420014	420015
*	HEAT EXCHANGER ASSEMBLY WITH NO HEATER OPENING	1	4200135	4200135	4200145	4200155
2	SPANNER BAR	2	410403	410403	410404	410405
3	NYLON GLIDE	700111	4	4	4	4
4	HEX HD CAP SCREW 5/16-18 X 7/8"	900109	10	10	10	10
5	FLAT WASHER 5/16"	900102	10	10	10	10
6	HEX JAM NUT 5/16-18	900103	4	4	4	4
7	HINGE BRACKET	410010	1	1	1	1
8	HEX HD CAP SCREW 5/16-18 X 7/8"	900109	2	2	2	2
9	SWING DOOR	410020	1	1	1	1
10	SWING DOOR INSULATION LESS POCKETS	410021	1	1	1	
10	SWING DOOR INSULATION WITH POCKETS	410023				1
11	1/2" DIA ROPE GASKET - SWING DOOR	410024	1	1	1	1
12	1/8" DIA ROPE GASKET - OBSERVATION PORT	410032	1	1	1	1
13	OBSERVATION PORT COVER	410022	1	1	1	1
14	SOCKET HD CAP SCREW 5/16"-18 X 3/4"	900108	2	2	2	2
15	HEX HD TAP BOLT 3/8"-16 X 1-3/4"	900170	2	2	2	2
16	USS FLAT WASHER 3/8"	90-036	2	2	2	2
17	SMOKEBOX	410006	1	1	1	1
18	BRASS SQUARE HD PIPE PLUG 1/4" NPT	950041	1	1	1	1
19	SMOKEBOX COLLAR - 6" DIA.	410026	1	1	1	
19	SMOKEBOX COLLAR - 7" DIA.	410027				1
20	CLEAN OUT COVER	410004	2	2	2	2
21	1/2" DIA ROPE GASKET - CLEAN OUT COVER	410005	EA	EA	EA	EA
22	THIRD PASS BAFFLE **	410007	2**	2**	2**	2**
23	SECOND PASS BAFFLE	410008		2	2	2
24	HEATER GASKET	270001	1	1	1	1
26	HEATER ASSEMBLY	420002	1	1	1	1
27	USS FLAT WASHER 3/8"	90-036	6	6	6	6
28	CAP SCREW 3/8"-16 X 7/8"	900450	6	6	6	6
36	REFRACTORY BLANKET**	1	415003**	415003**	415004**	415005**

\* NOT SHOWN

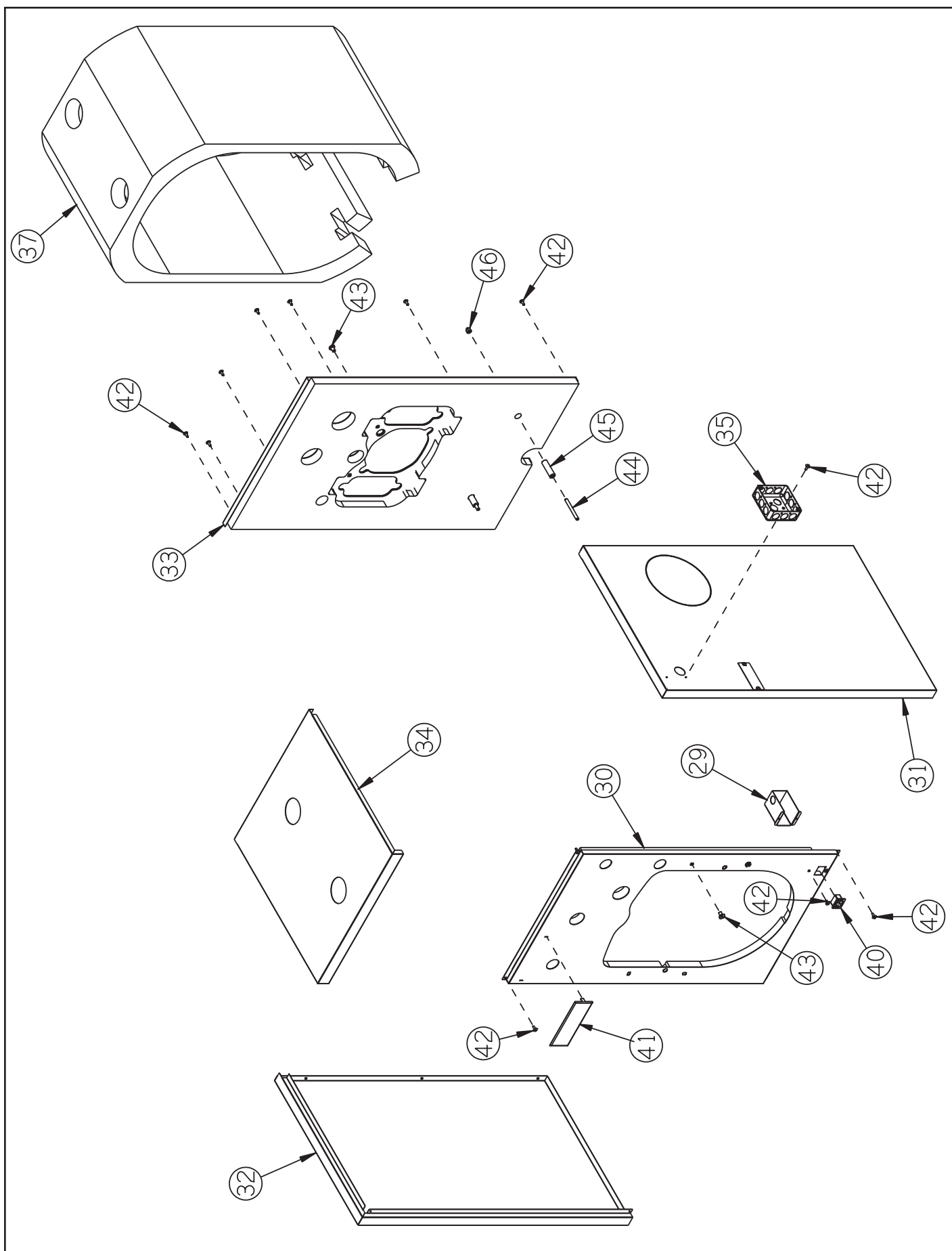
\*\* NOT USED IN ALL APPLICATIONS - CONSULT TABLE 4.1





KEY #	DESCRIPTION	QTY. OR CROWN PN	QUANTITY PER BOILER OR CROWN PART NUMBER			
			FSZ080	FSZ100	FSZ130	FSZ160
29	RECEPTACLE ENCLOSURE	410090	1	1	1	1
30	FRONT JACKET PANEL	420310	1	1	1	1
31	RIGHT SIDE JACKET PANEL	1	420303	420303	420304	420305
32	LEFT SIDE JACKET PANEL	1	420313	420313	420314	420315
33	REAR JACKET PANEL	420301	1	1	1	1
34	TOP JACKET PANEL	1	420323	420323	420324	420325
35	JUNCTION BOX	960155	1	1	1	1
37	FIBERGLASS INSULATION WRAPPER	1	422303	422303	422304	422305
40	POWER RECEPTACLE	960041	1	1	1	1
41	CROWN NAMEPLATE	98-004	1	1	1	1
42	#10 X 1/2" SHEET METAL SCREW	900120	15	15	15	15
43	5/16"-18 X 1/2" PAN HEAD SCREW	900420	4	4	4	4
44	5/16"-18 X 3" THREADED STUD	900111	2	2	2	2
45	5/8"O.D. X 2-5/32" LONG JACKET SPACER	410200	2	2	2	2
46	5/16"-18 ACORN NUT	146-95-042	2	2	2	2

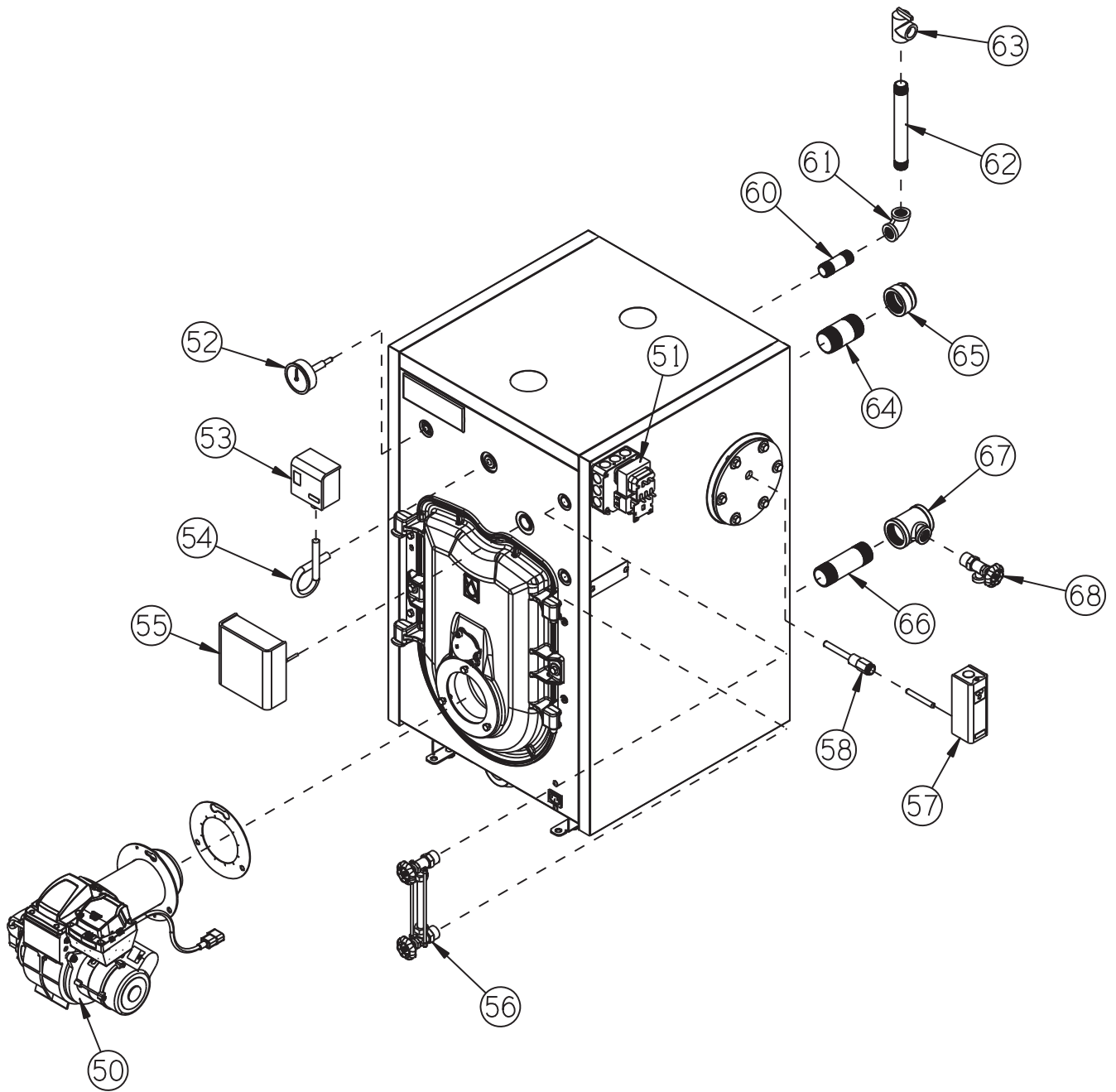
\* NOT SHOWN



KEY #	DESCRIPTION	QTY. OR CROWN PN	QUANTITY PER BOILER OR CROWN PART NUMBER			
			FSZ080	FSZ100	FSZ130	FSZ160
50	BECKETT OIL BURNER ASSY (NOTE 1)	1	42080B	42100B <sup>2</sup>	41130B	41160B
50	RIELLO OIL BURNER ASSY (NOTE 1)	1	42080R	42100R <sup>2</sup>	41130R	41160R
51	HONEYWELL R8285D5001 W/ MOLEX CONNECTOR	9601913	1	1	1	1
52	PRESSURE GAUGE	95-070	1	1	1	1
53	PRESSURE LIMIT, HONEYWELL L404F1367	3503800	1	1	1	1
54	SYPHON, 1/4" NPT X 1-7/8" X 3-1/2" X 90	950058	1	1	1	1
55	CG450 PROBE LOW WATER CUT-OFF	450450	1	1	1	1
56	GAUGE GLASS SET, 6" CONBRACO 21-104-10	950079	1	1	1	1
57	LIMIT, HONEYWELL L4006A2015	35-3510	1	1	1	1
58	WELL, 1/2" NPT X 3"	35-1006	1	1	1	1
60	3/4" NPT X 3" LONG NIPPLE	95-027	1	1	1	1
61	3/4" NPT 90° ELBOW	95-057	1	1	1	1
62	3/4" NPT X 8" LONG NIPPLE	950008	1	1	1	1
63	3/4" NPT SAFETY VALVE, 15 PSI, CONBRACO 13-512-B15	95-079	1	1	1	1
64	1-1/2" NPT X 3" NIPPLE	950023	1	1	1	1
65	1-1/2" NPT CAP	950107	1	1	1	1
66	1-1/4" NPT X 5" NIPPLE	95-043	1	1	1	
66	1-1/2" NPT X 5" NIPPLE	950025				1
67	1-1/4" X 1-1/4" X 3/4" NPT REDUCING TEE	95-100	1	1	1	
67	1-1/2" X 1-1/2" x 3/4" NPT REDUCING TEE	950019				1
68	3/4" NPT DRAIN VALVE	95-041	1	1	1	1
*	BAROMETRIC DRAFT CONTROL	1	13-020	13-020	13-020	13-018
*	FSZ STANDARD WIRING HARNESS	9601910	1	1	1	1
*	FSZ PRESSURE LIMIT HARNESS	9601911	1	1	1	1
*	FSZ LWCO HARNESS	9601912	1	1	1	1

\* NOT SHOWN

- PART NUMBERS PROVIDED ARE FOR FULLY CONFIGURED BURNERS AND INCLUDE PRIMARY SAFETY CONTROL, NOZZLES, BURNER CORD ASSEMBLIES AND (WHERE APPLICABLE) LOW FIRING RATE BAFFLES.
- BURNER ASSEMBLIES FOR THE FSZ100 ARE PACKAGED WITH 2 SECOND PASS BAFFLES PN 410008.



## Appendix A: Optional Dropped Header Gravity Return Piping Kit

The following near-boiler piping kits are available from Crown for use with FSZ boilers installed in gravity return systems:

421095 - Dropped Header Gravity Return Near Boiler Piping Kit (FSZ080,100,130)

421096 - Dropped Header Gravity Return Near Boiler Piping Kit (FSZ160)

These kits provide the pipe and fittings needed for the “drop header” piping as listed in Table A.1 for the FSZ080, FSZ100 and FSZ130 and in Table A.3 for the FSZ160.

### Installation of Dropped Header Gravity Return Piping Kit

1) Assemble Dropped Header Gravity Return Piping Kit for the FSZ080, FSZ100 and FSZ130 as shown in Figure A.2.

2) Assemble Dropped Header Gravity Return Piping Kit for the FSZ160 as shown in Figure A.4.

3) Tighten unions only after all piping is in the proper position. Use of pipe dope or teflon tape on all threaded surfaces is recommended.



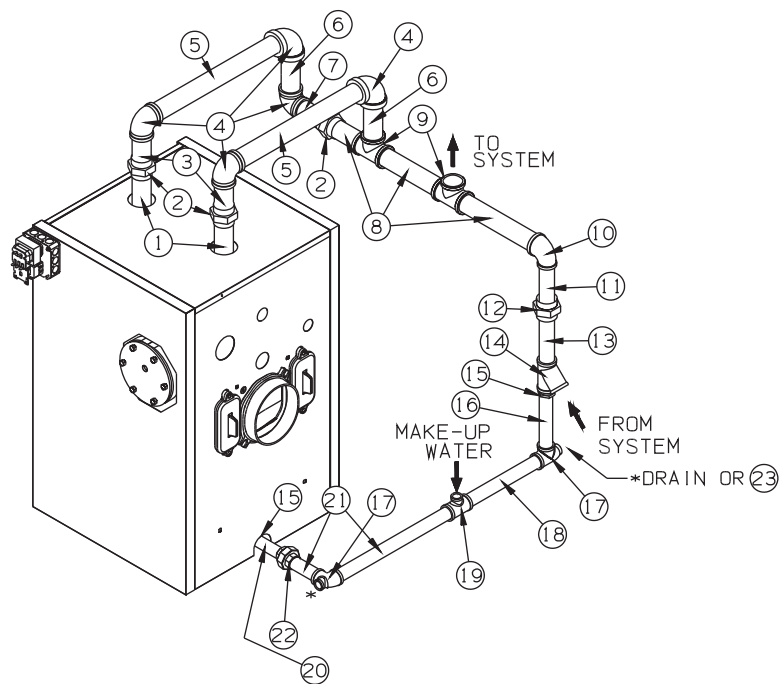
#### **WARNING**

Difference in piping compound and or method may effect pipe alignment.

**TABLE A.1: Dropped Header Material List for FSZ080, FSZ100 and FSZ130 Boilers**

Item	Fitting Description	Quantity
1	2" x 12" Nipple	2
2	2" Union	3
3	2" x 6" Nipple	2
4	2" Elbow	5
5	2" x 15" Nipple	2
6	2" x 7" Nipple	2
7	2" x 3" Nipple (FSZ080 and FSZ100) or 2" x 9" Nipple (FSZ130)	1
8	2" x 4-1/2" Nipple	3
9	2" Tee	2
10	2" - 1-1/2" Reducing Elbow	1
11	1-1/2" x 8" Nipple	1
12	1-1/2" Union	1
13	1-1/2" x 5-1/2" Nipple	1
14	1-1/2" Wye	1
15	1-1/2" - 1-1/4" Bushing	1
16	1-1/4" x 22" Nipple	1
17	1-1/4" x 3/4" x 1-1/4" Tee	2
18	1-1/4" x 12" Nipple	1
19	1-1/4" x 1-1/4" x 3/4" Tee	1
20	1-1/4" x 7" Nipple	1
21	1-1/4" x Close Nipple	2
22	1-1/4" Union	1
23	3/4" Plug	1

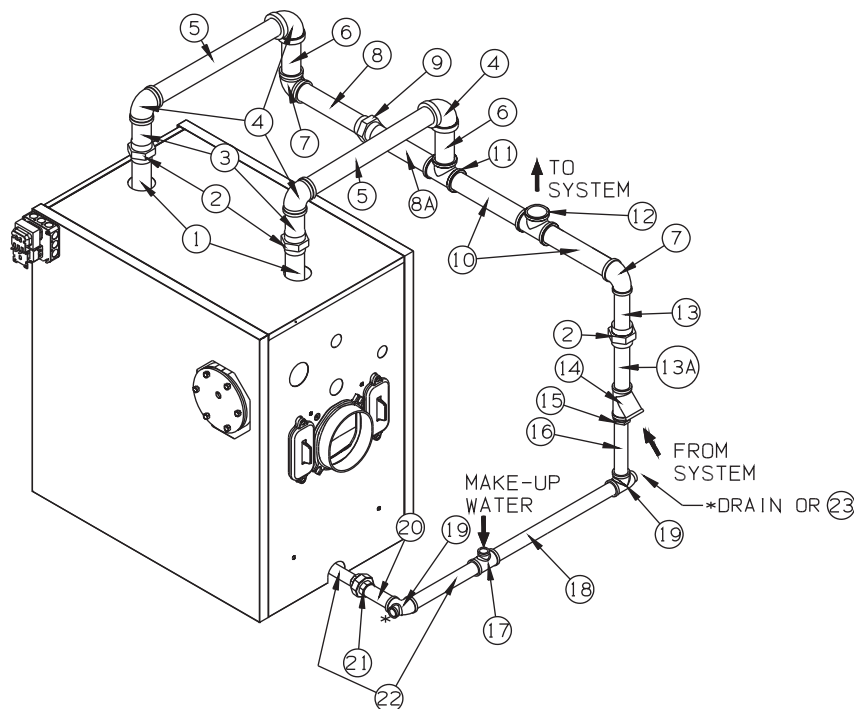
NOTE: Item 15 shown at boiler is installed on the boiler at the factory.



**FIGURE A.2: Dropped Header Gravity Return Diagram for FSZ080, FSZ100 and FSZ130**

**TABLE A-3: Dropped Header Material List for FSZ160 Boilers**

Item	Fitting Description	Quantity
1	2" x 12" Nipple	2
2	2" Union	3
3	2" x 6" Nipple	2
4	2" Elbow	4
5	2" x 15" Nipple	2
6	2" x 7" Nipple	2
7	3" x 2" Reducing Elbow	2
8	3" x 9" Nipple	1
8A	3" x 10" Nipple	1
9	3" Union	1
10	3" x 5" Nipple	2
11	3" x 3" x 2" Tee	1
12	3" Tee	1
13	2" x 7" Nipple	1
13A	2" x 5" Nipple	1
14	2" Wye	1
15	2" - 1-1/2" Bushing	1
16	1-1/2" x 20-3/4" Nipple	1
17	1-1/2" x 1-1/2" x 3/4 Tee	1
18	1-1/2" x 5" Nipple	1
19	1-1/2" x 3/4" x 1-1/2" Tee	2
20	1-1/2" x 4" Nipple	1
21	1-1/2" Union	1
22	1-1/2" x 8" Nipple	2
23	3/4" Plug	1



**FIGURE A.4: Dropped Header Gravity Return Diagram for FSZ160**



## Notes

## Notes

## SERVICE RECORD

DATESERVICE PERFORMED[illegible]



---

Manufacturer of Hydronic Heating Products  
P.O. Box 14818 3633 I. Street  
Philadelphia, PA 19134  
[www.crownboiler.com](http://www.crownboiler.com)