



- Multiple venting options
- Cast iron, wet-leg heat exchanger
- Stainless steel burners
- Powered intake and venting
- Controls located in a front vestibule for ease of service and flexibility installing the unit
- Advanced safety systems designed to assure clean, safe combustion
- Eight sizes from 60 to 245 MBH
- Limited lifetime warranty

See back side for piping configurations

CABO 2 Gas-Fired Hot Water Boiler

Designed for efficiency, reliability and performance. For direct vent residential applications

INTEGRATED BOILER CONTROL

Temperature control, relay and ignition functions in a single module. Includes additional circulator output for a second heating zone or an indirect water heater like the Mega-Stor II®.

Available Upgrade Options

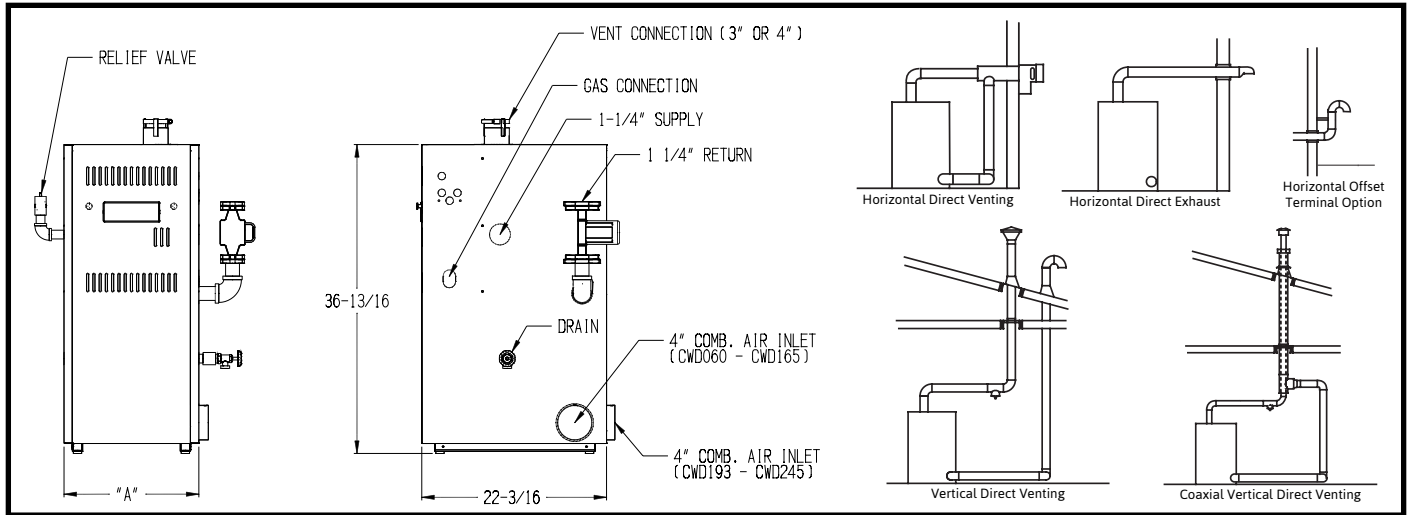
- 24 Volt Low Water Cutoff



Quality
Value &
Service

CWD SERIES - CABO 2

TECHNICAL SPECIFICATIONS



CROWN MODEL NUMBER	NO. OF SECS.	NATURAL AND LP GAS				DIMENSIONS (IN.)			SHIPPING WEIGHT (LBS.)
		INPUT (MBH)	HEATING CAPACITY (MBH)	AHRI NET WATER RATING (MBH)	AFUE (%)	COLLAR INLET DIA.	COLLAR EXHAUST DIA.	'A'	
CWD060	3	60	51	44	85.1	4	3	16-1/8	280
CWD083	4	82	71	62	85.1	4	3	19-3/4	315
CWD110	5	110	94	82	85.2	4	3	23-3/8	350
CWD138	6	137	118	103	85.2	4	3	27	385
CWD165	7	165	142	123	85.2	4	3 OR 4	30-5/8	420
CWD193	8	192	165	143	85.2	4	3 OR 4	34-1/8	475
CWD220	9	220	189	164	85.2	4	3 OR 4	32-3/4	525
CWD245	10	245	211	189	85.3	4	3 OR 4	41-3/8	580

IMPORTANT: This boiler requires a special venting system. Read instructions carefully before installing.

- Altitudes above 2,000 ft. - ratings should be reduced at a rate of 4% for each 1,000 ft. above sea level (US only)
- The Net Water Ratings are based on a piping and pickup allowance of 1.15.
- The manufacturer should be consulted before selecting a boiler for installations having unusual piping and pickup requirements, such as intermittent system operation, extensive piping systems, etc.

All CWD boiler models include a full one-year warranty. A limited, lifetime warranty is provided for the heat exchanger. A 5-year and a 10-year extended warranty covering parts and labor are also available. Visit VelocityBoilerWorks.com or see your warranty for complete details.



The Mega-Stor II® indirect water heater utilizes the energy created by your boiler to produce abundant hot water for your home. Mega-Stor II water heaters come in a variety of sizes from 26 to 119 gallons to meet a variety of residential and commercial needs. A Horizontal model is also available in 40 and 53 gallon sizes, as well as a Solar model in 79 and 119 gallon sizes.

Specifications are subject to change without notice.

