

## PRODUCT SELECTION GUIDE

Quality  
Value &  
Service

	Page
<b>RESIDENTIAL HEATING</b>	
<b>Phantom Combi II 10:1</b> .....	3
Gas-Fired - Stainless Steel - Combi Boiler	
<b>Phantom II 10:1</b>	
Gas-Fired - Stainless Steel - Condensing - Hot Water Boiler	
<b>Phantom Combi 10:1</b> .....	4
Condensing-Stainless Steel-Water Tube-Gas Fired-Hot Water-Direct Vent	
<b>Phantom 10:1</b>	
Condensing-Stainless Steel-Water Tube-Gas Fired-Hot Water-Direct Vent	
<b>Raptor 10:1</b> .....	5
Condensing--Direct Vent-Gas Fired-Stainless Steel-Fire Tube Design-Hot Water	
<b>Aruba (AWR)</b> Cast Iron - Gas-Fired - Hot Water - Atmospheric Vent .....	6
<b>Bali 2 (BWF)</b> Cast Iron - Gas-Fired - Hot Water - Power Vent .....	7
<b>Bermuda (BSI)</b> Cast Iron - Gas Fired - Steam - Atmospheric Vent .....	8
<b>Tobago (TWB)</b> Cast Iron - Oil-Fired - Hot Water - Atmospheric Vent .....	9
<b>Freeport II (FWZ)</b> Cast Iron - Oil-Fired - Hot Water - Atmospheric Vent	
<b>Freeport II (FSZ)</b> Cast Iron - Oil-Fired - Steam - Atmospheric Vent .....	10
<b>Kingston (KSB)</b> Cast Iron - Oil-Fired - Steam - Atmospheric Vent	
<b>COMMERCIAL HEATING</b>	
<b>Phantom-X</b> .....	11
Condensing-Stainless Steel-Water Tube-Gas Fired-Hot Water-Direct Vent	
<b>Raptor-X</b> Condensing-Stainless Steel-Fire Tube-Gas Fired-Hot Water-Direct Vent	
<b>Freeport (FW)</b> Cast Iron - Oil or Gas-Fired - Hot Water .....	12
<b>Series 16H</b> Cast Iron - Gas-Fired - Hot Water - Atmospheric Vent	
<b>Series 24</b> Cast Iron - Oil or Gas-Fired - Hot Water or Steam .....	13
<b>Series 49</b> Cast Iron - Gas Fired - Steam - Atmospheric Vent .....	14
<b>INDIRECT WATER HEATERS</b> .....	15
<b>Mega-Stor II (MS2)</b> Stainless Steel - Vertical	
<b>Mega-Stor II Buffer Tank</b> Stainless Steel	
<b>Maxi-Therm 2 (MT)</b> Glass Lined - Vertical .....	16
<b>FURNACES</b> .....	17
Low Profile High Boy	
Low Profile High Boy (Energy Star Certified)	
Low Boy Front • Low Boy Rear	
Horizontal/Counterflow • Hi Boy	
<b>ADVANCED FEATURES</b> .....	18
Integrated Boiler Control	
Hydrolevel 3250	
Touch Screen	
Phantom Adaptive Combustion	
<b>ACCESSORIES</b> .....	19
Steam Near Boiler Piping Kits	
Condensing Accessories	

## **Velocity Boiler Works**

**is a leader in Hydronic  
Heating Technologies.**

### **Velocity**

delivers Residential and Commercial Oil and Gas-Fired Cast Iron Boilers, Stainless Steel Condensing Boilers, Indirect Water Heaters, and Warm Air Oil Furnaces with the guiding principles of offering quality products with outstanding customer service at competitive pricing.

### **Product Notes:**

The NET AHRI Steam Ratings shown are based on a Piping and Pickup Allowance of 1.333.

The NET AHRI Water Ratings shown are based on a Piping and Pickup Allowance of 1.15.

The Manufacturer should be consulted before selecting a boiler for installations having unusual Piping Pickup requirements, such as Intermittent System Operation, Extensive Piping Systems, etc.

Not all models are suitable for installation with all fuels or altitudes. Refer to Product Specific Literature or Manual for complete details.

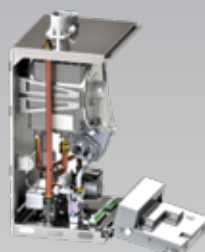




# PHANTOM<sup>®</sup> COMBI II


**Condensing - Direct Vent - Stainless Steel  
Gas-Fired – Adaptive Combustion  
Hot Water - Water Tube**

- 95% AFUE with 10:1 turndown ratio
- Heat Input - 13.6-120 MBH Input
- Domestic Hot Water - Up to 3.7 GPM at 70 degree rise
- Low Loss Header Included
- Field Convertible to LP - No conversion kit required



- Easy access to key components
- Fully removable front & side panels
- Drop down control center

**CLICK HERE  
FOR MORE INFO**

Space Heating Ratings						Dimensions			Domestic Hot Water (DHW) Ratings <sup>1</sup>						Shipping Weight  (lbs)
Model	Input <sup>2</sup> (MBH)		DOE Heating Capacity (MBH)	AHRI Net Rating <sup>3</sup> (MBH)	 AFUE %	Depth (in)	Width (in)	Height (in)	Input <sup>2</sup> (MBH)		Hot Water Draw Limits GPM				
	Min	Max							Min	Max	Max			Min <sup>4</sup>	
											70°F Rise	77°F Rise	90°F Rise		
PHTM2136C	13.6	120	112	97	95.0	16.3	17.8	29.8	13.6	136	3.7	3.4	2.9	0.5	112
PHTM2200C	20	150	141	123	95.0	20.4	17.8	29.8	20	200	5.2	4.7	4.0	0.5	135

<sup>1</sup> DHW ratings are not AHRI certified.

<sup>2</sup> Input and DHW draw limits for elevations up to 2,000 ft. with min vent length. See Table 3-3 in installation manual for derate at max vent length.

<sup>3</sup> Net AHRI Water Ratings shown are based on a piping and pickup allowance of 1.15. The manufacturer should be consulted before selecting a boiler for installations having unusual piping and pickup requirements, such as intermittent operation, extensive piping systems, etc.

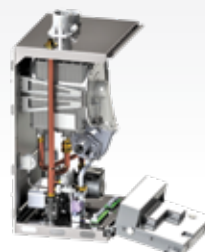
<sup>4</sup> Min DHW flow rate required through boiler to initiate DHW demand. Higher flow rate through fixture may be required due to mixing at tempering valve and/or fixture itself.



# PHANTOM<sup>®</sup> II



**Condensing - Direct Vent - Stainless Steel  
Gas-Fired – Adaptive Combustion  
Hot Water - Water Tube**

- 95% AFUE with 10:1 Turndown
- Three Sizes - 120,150,180 MBH Input
- 2" venting standard
- 5-year parts warranty
- Serviceability



- Easy access to key components
- Fully removable front & side panels
- Drop down control center

**CLICK HERE  
FOR MORE INFO**

Space Heating Ratings						Dimensions and Connections					Shipping Weight (lbs)
Model	Input <sup>1</sup> (MBH)		DOE Heating Capacity (MBH)	AHRI Net Rating (MBH) <sup>2</sup>	 AFUE %	Depth (in)	Width (in)	Height (in)	Space Heating Water sweat, (in)	Gas NPT	
	Min	Max									
PHTM2120H	13.6	120	112	97	95.0	16.3	17.8	29.8	1	1/2	112
PHTM2150H	20	150	141	123	95.0	20.4	17.8	29.8	1	1/2	132
PHTM2180H	20	180	169	147	95.0	20.4	17.8	29.8	1	1/2	132

<sup>1</sup> Input for elevations up to 2,000 ft. with min vent length. See Table 3-3 in installation manual for vent diameter connection sizes and derate at max vent length. Above models are not for installation above 2,000 ft.

<sup>2</sup> Net AHRI Water Ratings shown are based on a piping and pickup allowance of 1.15. The manufacturer should be consulted before selecting a boiler for installations having unusual piping and pickup requirements, such as intermittent operation, extensive piping systems, etc.



# PHANTOM<sup>®</sup>

## COMBI

**Condensing - Direct Vent - Stainless Steel  
Gas-Fired - Hot Water - Water Tube**

- 95% AFUE
- 10:1 turndown ratio
- Two Sizes: 150, 180 MBH
- Field convertible to LP gas with optional kit
- Up to 4.5 gallons per minute of hot water at 70 degree rise (PHNTM180CB)

**CLICK HERE  
FOR MORE INFO**

SPACE HEATING RATINGS					DOMESTIC HOT WATER (DHW) RATINGS <sup>1</sup>							
MODEL	INPUT (MBH) MIN-MAX	GROSS OUTPUT, MBH	NET AHRI WATER, MBH	AFUE, %	INPUT (MBH) MIN-MAX	Max Draw GPM <sup>1,2</sup>		W (IN)	D (IN)	H (IN)	VENT DIAMETER (IN)	APPROX. SHIPPING WEIGHT (LBS)
						70°F Rise	77°F Rise					
PHNTM150CB	15-150	142	123	95.0	15-150	3.9	3.7	17	19	30	3	169
PHNTM180CB <sup>5</sup>	18-180	169	147	95.0	18-180	4.5	4.1	17	19	30	3	169

1. DHW ratings are not AHRI certified.



# PHANTOM<sup>®</sup>

**Condensing - Direct Vent - Stainless Steel  
Gas-Fired - Hot Water - Water Tube**

- 95% AFUE
- 10:1 turndown ratio
- Five sizes: 80-180 MBH
- 5-year parts warranty
- Field convertible to LP gas with optional kit
- Optional EZ loop low loss header
- Optional EZ Base Pedestal

**CLICK HERE  
FOR MORE INFO**

SPACE HEATING RATINGS									
MODEL	INPUT (MBH) Min-Max	HEATING CAPACITY (MBH)	NET AHRI WATER RATING (MBH)	AFUE (%)	W (IN)	D (IN)	H (IN)	VENT DIAMETER (IN)	APPROX. SHIPPING WEIGHT (LBS)
PHNTM080B	8-80	74	64	95.0	16-5/8	17	29-1/16	2 OR 3	100
PHNTM100B	10-100	94	80	95.0	16-5/8	17	29-1/16	2 OR 3	102
PHNTM120B	12-120	112	97	95.0	16-5/8	17	29-1/16	3	105
PHNTM150B	15-150	142	123	95.0	16-5/8	21	29-1/16	3	119
PHNTM180B	18-180	179	147	95.0	16-5/8	21	29-1/16	3	119
PHNTM180M	18-180	168	146	94.5	16-5/8	21	29-1/16	3	119




## Condensing - Direct Vent - Gas-Fired Stainless Steel - Fire Tube Design - Hot Water

- Up to 96% AFUE
- 10:1 turndown ratio
- Five sizes: 85-270 MBH heat only
- 5-year parts warranty
- Field convertible to LP gas with optional kit

**CLICK HERE  
FOR MORE INFO**

### SPACE HEATING RATINGS



MODEL	INPUT (MBH) MIN-MAX	HEATING CAPACITY (MBH)	NET AHRI WATER RATING (MBH)	 AFUE (%)	W (IN)	D (IN)	H (IN)	VENT DIAMETER (IN)	APPROX. SHIPPING WEIGHT (LBS)
RPTR085HB	8.5 - 85	79	69	96.0	19-13/16	20	33-5/16	2 or 3	140
RPTR110HB	11 - 110	103	90	96.0	19-13/16	20	33-5/16	2 or 3	145
RPTR155HB	15.5 - 155	145	126	95.0	19-13/16	20	33-5/16	3	160
RPTR205HB	20.5 - 205	189	164	95.0	19-13/16	21	33-5/16	3	175
RPTR270HB	27 - 270	252	219	95.0	19-13/16	21	33-5/16	3	185

RESIDENTIAL HEATING

WATER

CONDENSING

GAS

Quality  
Value &  
Service



# ARUBA

## (AWR SERIES)

**Cast Iron - Gas-Fired - Hot Water  
Atmospheric Vent**

- 84.0% AFUE
- Eight sizes: 38-280 MBH
- Natural gas & LP models available
- Boiler easily field convertible to left side piping
- Controls located inside the jacket and easily accessible from the front of boiler
- LWCO Standard

### SPACE HEATING RATINGS



**CLICK HERE  
FOR MORE INFO**



MODEL	NATURAL GAS & LP GAS			AFUE (%)	NO. OF SECS.	W (IN)	D (IN)	H (IN)	VENT DIAM. (IN)	APPROX. SHIPPING WEIGHT (LBS)
	INPUT (MBH)	HEATING CAPACITY (MBH)	NET AHRI WATER RATING (MBH)							
AWR038B	38	32	28	84.0	2	9-3/4	31-1/2	39-1/2	4	234
AWR070B	70	59	51	84.0	3	12-7/8	31-1/2	39-1/2	4	284
AWR105B	105	88	77	84.0	4	15-3/8	31-1/2	39-1/2	5	334
AWR140B	140	117	102	84.0	5	18-1/2	31-1/2	39-1/2	6	384
AWR175B	175	146	127	84.0	6	21-1/2	31-3/4	39-1/2	7	434
AWR210B	210	176	153	84.0	7	24-5/8	33-1/2	39-1/2	7	484
AWR245B	245	205	178	84.0	8	27-5/8	33-1/2	39-1/2	8	533
AWR280B	280	234	203	84.0	9	30-3/4	33-1/2	39-1/2	8	583





## BALI 2 (BWF SERIES)

**Cast Iron - Gas-Fired  
Hot Water - Power Vent**

- Cast iron heat exchanger and stainless steel burners
- Integral fan for sidewall venting
- Six sizes available in natural or LP gas
- Limited lifetime warranty
- LWCO standard equipment
- Optional direct vent kit available
- Boiler easily field convertible to left side piping

**CLICK HERE  
FOR MORE INFO**



BWF Space Heating Ratings						# of Sections	'A' Width	Connection Size		Water Content	Approx. Shipping Weight	Optional Direct Vent Kit
Basic Boiler Model	Fuel	Input	Heating Capacity	Net AHRI Rating, Water	AFUE			Gas	Vent			
		MBH	MBH	MBH	%			(inch) (NPT)	(inch)			
BWF070BN	NAT. GAS	70	60	52	85.0	3	12-3/4	1/2	3	2	260	110019-03
BWF105BN	NAT. GAS	105	90	78	85.0	4	15-1/2	1/2	3	3	310	110019-04
BWF140BN	NAT. GAS	140	120	104	85.0	5	18-1/2	1/2	3	4	360	110019-05
BWF175BN	NAT. GAS	175	150	130	85.0	6	21-1/2	1/2	3	5	415	110019-06
BWF210BN	NAT. GAS	210	179	156	85.0	7	24-3/4	3/4	3	6	470	110019-07
BWF245BN	NAT. GAS	245	208	181	84.0	8	27-3/4	3/4	4	7	525	110019-08
BWF063BL	PROPANE	63	54	47	85.0	3	12-3/4	1/2	3	2	260	110019-03
BWF094BL	PROPANE	94.5	81	70	85.0	4	15-1/2	1/2	3	3	310	110019-04
BWF126BL	PROPANE	126	108	94	85.0	5	18-1/2	1/2	3	4	360	110019-05
BWF157BL	PROPANE	157.5	135	117	85.0	6	21-1/2	1/2	3	5	415	110019-06
BWF189BL	PROPANE	189	161	140	85.0	7	24-3/4	3/4	3	6	470	110019-07
BWF220BL	PROPANE	220.5	187	163	84.0	8	27-3/4	3/4	4	7	525	110019-08

Direct Vent Kit is included with high altitude models.

**Quality  
Value  
Service**

RESIDENTIAL HEATING

WATER

NON-CONDENSING

GAS



# BERMUDA

## (BSI SERIES)

Cast Iron - Gas-Fired - Steam  
Atmospheric Vent

- Up to 82.2% AFUE
- Ten sizes: 69-379 MBH
- Natural gas & LP models available
- Fully assembled or available as a semi-pack (172 and up)
- Near boiler piping kit available separately for ease of installation

**CLICK HERE  
FOR MORE INFO**



### SPACE HEATING RATINGS



MODEL	NATURAL OR LP GAS				AFUE (%)	NO. OF SECS	W (IN)	D (IN)	H (IN)	VENT DIAMETER (IN)	APPROX. SHIPPING WEIGHT PACKAGED (LBS)
	INPUT (MBH)	HEATING CAPACITY (MBH)	NET AHRI STEAM RATING								
			(SQ. FT.)	(MBH)							
BSI069	69	57	179	43	82.0	3	12-3/4	28	40-7/16	4	365
BSI103	103	85	267	64	82.0	4	16	28	40-7/16	5	432
BSI138	138	113	354	85	82.0	5	19-1/4	28	40-7/16	6	504
BSI172	172	142	446	107	82.1	6	22-1/2	28	40-7/16	6	589
BSI207	207	171	533	128	82.1	7	25-3/4	30	40-7/16	7	669
BSI241	241	199	621	149	82.2	8	29	30	40-7/16	7	745
BSI276	276	229	708	172	82.2	9	32-1/4	30	40-7/16	8	826
BSI311*	310	240***	790	180	77.5"	10	35-1/2	30	45-7/16	8	957
BSI346*	345	267***	879	200	77.5"	11	38-3/4	30	45-7/16	9	1,044
BSI380*	379	294***	966	221	77.5"	12	42	30	45-7/16	9	1,125

\*\*Thermal Efficiency

\*\*\* Gross Output

\*Not available for use with LP gas





# TOBAGO

Cast Iron - Oil-Fired - Water  
Atmospheric Vent  
(TWB SERIES)

**CLICK HERE  
FOR MORE INFO**

- ENERGY STAR® rated with efficiencies up to 87.3%
- Three physical sizes with firing rates from 0.65-1.90 GPH
- Beckett AFG burner standard; Carlin & Riello burners optional on most sizes
- Burner packaged separately for easier handling
- Optional front-mounted tankless coil for domestic hot water supply
- Hydrolevel Hydrostat with low water cut off



TWB SPACE HEATING RATINGS					NO. OF SECS.	TANKLESS HEATER	DIMENSIONS			SHIPPING WEIGHT
CROWN MODEL NUMBER	BURNER INPUT	HEATING CAPACITY	AHRI NET RATING WATER	AFUE (%)			"A"	"B"	"C"	
	(GAL/HR)	(MBH)	(MBH)			(GPM)	(in.)	(in.)	(in.)	(LBS)
TWB065	0.65	80	70	87.3*	3	2.75	17-3/8	8-15/16	6	560
TWB075	0.75	92	80	87.0*	3	3.00	17-3/8	8-15/16	6	560
TWB100	1.00	122	106	86.3	3	3.25	17-3/8	8-15/16	6	560
TWB125	1.20	148	129	87.0*	4	3.75	22-3/8	10-13/16	7	680
TWB150	1.50	182	158	86.0	4	4.00	22-3/8	10-13/16	7	680
TWB175	1.75	214	186	86.4	5	4.25	27-3/8	13-5/16	8	800
TWB200	1.90	231	201	86.1	5	4.75	27-3/8	13-5/16	8	800

\*ENERGY STAR® certified product

Notes: 1. Net Ratings are based on piping and pick-up allowances of 1.15. The manufacturer should be consulted before selecting a boiler for installations having unusual piping and pickup requirements, such as intermittent system operation, extensive piping systems, etc.  
2. Burner Capacity Rating, GPH is based on #2 oil with a Gross Heating Value equal to 140000 BTU/Gal.  
3. Tankless heater ratings based on 40F inlet water, 140F outlet water, and 190F boiler water. Ratings are also based on 5 minute intermittent draws with 10 minutes between draws.



# FREEPORT II

Cast Iron - Oil-Fired - Hot Water  
Atmospheric Vent  
(FWZ SERIES)

- Six sizes: 0.60-1.60 GPH
- Swing door with burner disconnect plug for easy access to all heating surfaces through the front
- Beckett AFG burner standard; Carlin & Riello burners optional on most sizes

**CLICK HERE  
FOR MORE INFO**



SPACE HEATING RATINGS					NO. OF SECS.	W (IN)	D (IN)	H (IN)	VENT DIAM. (IN)	APPROX. SHIPPING WEIGHT (LBS)
MODEL	BURNER INPUT* (GPH)	HEATING CAPACITY (MBH)	NET AHRI WATER RATING (MBH)	AFUE (%)						
FWZ060	0.60	73	63	86.0	2	20-3/4	16-1/4	31-1/2	5	430
FWZ080	0.80	97	84	86.3	2	20-3/4	16-1/4	31-1/2	5	430
FWZ081	0.80	99	86	87.0*	3	20-3/4	22-1/4	31-1/2	6	545
FWZ100	1.00	123	107	87.0*	3	20-3/4	22-1/4	31-1/2	6	545
FWZ130	1.30	160	139	87.0*	4	20-3/4	28-1/4	31-1/2	6	658
FWZ160	1.60	197	171	87.0*	5	20-3/4	34-1/4	31-1/2	7	771

1. Input based on 140 MBH per gallon #2 fuel oil

ENERGY STAR® certified product

RESIDENTIAL HEATING

WATER

OIL





# FREEPORT II

## (FSZ SERIES)

**Cast Iron - Oil-Fired - Steam  
Atmospheric Vent**

**CLICK HERE  
FOR MORE INFO**

- Up to 86.0% AFUE
- Four sizes: 0.80-1.60 GPH
- Optional side-mounted tankless coil for domestic hot water
- Near boiler piping kit available separately for ease of installation

SPACE HEATING RATINGS												
MODEL	BURNER INPUT <sup>2</sup> (GPH)	HEATING CAPACITY (MBH)	NET AHRI STEAM RATING		AFUE (%)	NO. OF SECS.	W (IN)	D (IN)	H (IN)	VENT DIAMETER (IN)	TANKLESS HEATER (GPM) <sup>1</sup>	APPROX. SHIPPING WEIGHT (LBS)
			(MBH)	(SQ. FT.)								
FSZ080	0.80	97	73	303	85.7	3	22-1/2	22-1/4	38-1/2	6	3.00	607
FSZ100	1.00	122	92	381	86.0	3	22-1/2	22-1/4	38-1/2	6	3.25	607
FSZ130	1.30	158	119	494	86.0	4	22-1/2	28-1/4	38-1/2	6	3.50	744
FSZ160	1.60	195	146	610	85.9	5	22-1/2	34-1/4	38-1/2	7	4.00	881

1. Tankless heater ratings based on an average temperature rise of 90°F with 200°F boiler water temperature and 40°F heater inlet temperature (intermittent draw).

2. Input based on 140 MBH per gallon #2 fuel oil.




# KINGSTON

## (KSB SERIES)

**Cast Iron - Oil-Fired - Steam  
Atmospheric Vent**

**CLICK HERE  
FOR MORE INFO**

- Efficiencies up to 86.4% AFUE
- Three physical sizes with firing rates from 0.65-1.90 GPH
- Optional side-mounted tankless coil for domestic hot water
- Beckett AFG burner standard; Carlin & Riello burners optional on most sizes
- Burner packaged separately for easier handling
- Near boiler piping kit available separately for ease of installation

KSB SPACE HEATING RATINGS							NO. OF SECS.	TANKLESS HEATER	DIMENSIONS			SHIPPING WEIGHT
CROWN MODEL NUMBER	BURNER INPUT	HEATING CAPACITY	AHRI NET RATING STEAM		AFUE (%)	“A”			“B”	“C”		
			(GAL/HR)	(MBH)							(Sq. Ft.)	
KSB065	0.65	79	246	59	85.1	3	2.25	17-3/8	8-15/16	6	570	
KSB075	0.75	91	283	68	85.7	3	2.25	17-3/8	8-15/16	6	570	
KSB100	1.00	121	379	91	85.0	3	2.50	17-3/8	8-15/16	6	570	
KSB125	1.20	147	458	110	86.4	4	2.75	22-3/8	10-13/16	7	690	
KSB150	1.50	181	567	136	85.1	4	3.00	22-3/8	10-13/16	7	690	
KSB175	1.75	212	663	159	85.6	5	3.25	27-3/8	13-5/16	8	810	
KSB200	1.90	230	721	173	85.3	5	3.50	27-3/8	13-5/16	8	810	

Notes:

1. Net Ratings are based on piping and pick-up allowances of 1.333. The manufacturer should be consulted before selecting a boiler for installations having unusual piping and pickup requirements, such as intermittent system operation, extensive piping systems, etc.

2. Burner Capacity Rating, GPH is based on #2 oil with a Gross Heating Value equal to 140000 BTU/Gal.

3. Tankless heater ratings based on 40F inlet water, 140F outlet water, and 190F boiler water. Ratings are also based on 5 minute intermittent draws with 10 minutes between draws.



**CLICK HERE FOR MORE INFO  
ON PHANTOM-X 210-285**

# PHANTOM-X™

**Condensing - Direct Vent - Stainless Steel  
Gas-Fired - Hot Water - Water Tube**

- Seven Sizes: 210-800 MBH
- 5:1 turndown ratio
- Up to 95% AFUE (PHNTM 210-285)
- Up to 97% thermal efficiency (399C-800C)
- Stackable for floor space savings
- Natural gas and LP applications - consult manual

**CLICK HERE FOR MORE INFO  
ON PHANTOM-X "C"**



SPACE HEATING RATINGS						AHRI CERTIFIED				
MODEL	MAX. INPUT (MBH)	MIN. INPUT (MBH)	HEATING CAPACITY (MBH)	NET AHRI WATER RATING (MBH)	AFUE (%)	W (IN)	D (IN)	H (IN)	VENT DIAMETER (IN)	APPROX. SHIPPING WEIGHT (LBS)
PHNTM210	210	42	194	169	95.0**	16-11/16	23-15/16	32-3/16	3	206
PHNTM285	285	57	262	228	95.0**	16-11/16	21-13/16	43-7/16	3	256
PHNTM399C	399	80	375*	326	94.1 <sup>†</sup>	16-7/8	31-3/16	43-1/2	4	316
PHNTM500C	500	100	485*	422	97.0 <sup>†</sup>	16-7/8	46-1/2	35-1/16	4	368
PHNTM600C	625	125	594*	517	95.0 <sup>†</sup>	16-7/8	49-1/2	35-1/16	6	458
PHNTM700C	725	145	689*	599	95.0 <sup>†</sup>	16-7/8	49-1/2	35-1/16	6	458
PHNTM800C	800	160	760*	661	95.0 <sup>†</sup>	16-7/8	53-5/16	35-1/16	6	500
*Gross output						<sup>†</sup> Thermal efficiency				

\*\* ENERGY STAR® certified product






# RAPTOR-X® FIRETUBE

**Condensing - Direct Vent - Stainless Steel  
Gas-Fired - Hot Water - Fire Tube**

- 95% thermal efficiency
- 10:1 turndown ratio
- Two sizes: 320 & 399 MBH
- Field convertible to LP gas with optional kit
- Can be floor or wall mounted

**CLICK HERE  
FOR MORE INFO**



SPACE HEATING RATINGS										
MODEL	INPUT MIN-MAX (MBH)	HEATING CAPACITY (MBH)	AHRI NET RATING (MBH)	THERMAL EFFICIENCY %	W (IN)	D (IN)	H (IN)	VENT DIAMETER (IN)	APPROX. SHIPPING WEIGHT (LBS)	
RPTR320HB	32-320	304	264	95.0	23	22.4	45.28	4	270	
RPTR399HB	39.9-399	379	330	95.0	23	22.4	45.28	4	275	



# FREEPORT (FW SERIES)

**Residential/Commercial - Cast Iron  
Oil- or Gas-Fired - Hot Water**

- Thermal efficiencies up to 84.5% for Oil, 84.0% for Gas
- Six Sizes: 355-1091 MBH Gross Output
- Swing open burner door
- 3-pass Scotch Marine design
- Forced or normal draft venting

**CLICK HERE  
FOR MORE INFO**



## SPACE HEATING RATINGS



MODEL	BURNER INPUT		GROSS OUTPUT (MBH)	NET AHRI WATER RATING (MBH)	THERMAL EFF %		W (IN)	D (IN)	H (IN)	VENT DIAMETER (IN)	APPROX SHIPPING WEIGHT (LBS)
	GAS (MBH)	OIL (GPH)			GAS	OIL					
FW-4	433	3.0	355	309	81.7	84.5	33	26	36	7	1126
FW-5	577	4.0	478	416	82.7	84.5	33	37	36	7	1313
FW-6	722	5.0	600	522	83.2	84.5	33	42	36	8	1524
FW-7	866	6.0	723	629	83.5	84.5	33	47	36	9	1743
FW-8	1082	7.5	907	789	83.8	84.5	33	52	36	10	1947
FW-9	1299	9.0	1091	949	84.0	84.5	33	57	36	10	2143



# SERIES 16H

**Cast Iron - Gas-Fired - Hot Water  
Atmospheric Vent**

- Thermal efficiency ratings up to 81%
- Four sizes: 340-505 MBH input
- Shipped semi-packaged for convenience

**CLICK HERE  
FOR MORE INFO**



## SPACE HEATING RATINGS



MODEL	INPUT MBH	GROSS OUTPUT MBH	NET AHRI WATER RATING MBH	THERMAL EFFICIENCY %	NO. OF SECS.	W (IN)	D (IN)	H (IN)	VENT DIAMETER (IN)	APPROX. SHIPPING WEIGHT (LBS)
16H-340	340	275	239	81.0	7	27-1/2	32-7/16	32-1/2	8	870
16H-410	410	328	285	80.1	8	31-1/4	32-7/16	32-1/2	9	950
16H-460	460	370	322	80.4	9	35	32-7/16	32-1/2	10	1040
16H-505	505	406	353	80.5	10	38-3/4	32-7/16	32-1/2	10	1140






# SERIES 24 Cast Iron - Oil- or Gas-Fired Hot Water or Steam

- Ten sizes: 342-1852 MBH gross output
- Cast iron sectional heat exchanger and push nipples
- Easily assembled with short individual draw rods
- Optional tankless heater for domestic hot water
- Top or rear vent connections

## SERIES 24 WATER & STEAM (OIL-FIRED)

Space Heating Ratings						AHRI CERTIFIED® www.ahri-certified.org	FOR MORE INFO		CROWN BOILER™ VELOCITY BOILER WORKS			
Boiler Model <sup>5</sup>	Burner Input	Gross Output	Net AHRI Rating			Thermal Efficiency %	No. Of Sections	W (In.)	D (In.)	H (In.)	Nominal Vent Dia. (In.)	Approx. Shipping Weight (Lbs)
	Oil		Steam		Water							
	(GPH)		MBH	Sq. Ft.	MBH							
24-03W0	3.05	356			310	85.0	3	32-1/8	18-1/4	57	7	1363
24-03S0	3.05	348	261	1088		81.5	3	32-1/8	18-1/4	57	7	1363
24-04*0	4.10	471	353	1471	410	82.1	4	32-1/8	24-1/4	57	7	1675
24-05*0	5.50	634	476	1983	551	82.1	5	32-1/8	30-1/4	57	8	1987
24-06*0	6.90	797	598	2492	693	82.1	6	32-1/8	36-1/4	57	8	2273
24-07*0	8.10	937	703	2929	815	82.1	7	32-1/8	42-1/4	57	8	2589
24-08*0	9.40	1087	815	3396	945	82.1	8	32-1/8	48-1/4	57	10	2901
24-09*0	11.40	1316	992	4133	1144	82.1	9	32-1/8	54-1/4	57	10	3282
24-10*0	13.00	1505	1149	4788	1309	82.1	10	32-1/8	60-1/4	57	10	3614
24-11*0	14.60	1690	1303	5429	1470	82.1	11	32-1/8	66-1/4	57	12	3925
24-12*0	16.00	1852	1396	5817	1610	82.1	12	32-1/8	72-1/4	57	12	4252

## SERIES 24 WATER & STEAM (GAS-FIRED)

Space Heating Ratings												
Boiler Model <sup>5</sup>	Burner Input	Gross Output	Net AHRI Rating			Thermal Efficiency %	No. Of Sections	W (In.)	D (In.)	H (In.)	Nominal Vent Dia. (In.)	Approx. Shipping Weight (Lbs)
	Gas		Steam		Water							
	(MBH)		MBH	Sq. Ft.	MBH							
24-03WG	440	356			310	81.0	3	32-1/8	18-1/4	57	7	1363
24-04*G	594	476	357	1488	414	81.7	4	32-1/8	24-1/4	57	7	1675
24-05*G	792	634	476	1983	551	81.7	5	32-1/8	30-1/4	57	8	1987
24-06*G	990	793	595	2479	690	81.7	6	32-1/8	36-1/4	57	8	2273
24-07*G	1174	940	705	2938	817	81.7	7	32-1/8	42-1/4	57	8	2589
24-08*G	1358	1089	817	3404	947	81.7	8	32-1/8	48-1/4	57	10	2901
24-09*G	1641	1316	992	4133	1144	81.7	9	32-1/8	54-1/4	57	10	3282
24-10*G	1867	1497	1142	4758	1302	81.7	10	32-1/8	60-1/4	57	10	3614
24-11*G	2093	1681	1295	5396	1462	81.7	11	32-1/8	66-1/4	57	12	3925
24-12*G	2320	1863	1404	5850	1620	81.7	12	32-1/8	72-1/4	57	12	4252

COMMERCIAL

NON-CONDENSING

WATER/STEAM

OIL/GAS



## SERIES 49 Cast Iron - Gas-Fired - Steam Atmospheric Vent

- Tappings on both end sections, return can be piped left or right
- Cast iron sectional heat exchanger
- Natural Gas Only
- Sectional knock-down (299 to 550 MBH)
- 2" Skim taping

### SERIES 49 STEAM (NG-FIRED ONLY)

Space Heating Ratings					AHRI CERTIFIED <sup>C</sup>									
Boiler Model	Input	Heating Capacity	Net AHRI Rating		AFUE <sup>2</sup> (%)	No. Of Sections	W (In.)	H (In.)	D (In.)	Nominal Vent Dia. <sup>3</sup> (In.)	Supply (NPT)	Return (NPT)	Gas Conn <sup>4</sup> (NPT)	Approx. Shipping Weight (Lbs)
	(MBH)	(MBH)	MBH	Sq. Ft.										
49-299S	299	246	185	771	82.0	7	36-9/16	40-3/4	40	8	(2) 2	2	3/4	881 <sup>5</sup>
49-350S	350	284 <sup>1</sup>	213	890	81.0 <sup>2</sup>	8	41-5/8	40-3/4	40	6 & 7	(3) 2	2	1/2 & 3/4	1008 <sup>5</sup>
49-399S	399	323 <sup>1</sup>	242	1,012	81.0 <sup>2</sup>	9	46-11/16	40-3/4	40	6 & 8	(3) 2	2	1/2 & 3/4	1123 <sup>5</sup>
49-450S	450	365 <sup>1</sup>	274	1,143	81.0 <sup>2</sup>	10	51-3/4	40-3/4	40	7 & 8	(4) 2	2	3/4 & 3/4	1239 <sup>5</sup>
49-500S	500	405 <sup>1</sup>	304	1,269	81.0 <sup>2</sup>	11	56-13/16	40-3/4	40	7 & 8	(4) 2	2	3/4 & 3/4	1354 <sup>5</sup>
49-550S	550	446 <sup>1</sup>	335	1,397	81.0 <sup>2</sup>	12	61-7/8	40-3/4	40	8 & 8	(4) 2	2	3/4 & 3/4	1469 <sup>5</sup>

**CLICK HERE FOR MORE INFO**



<sup>1</sup> Gross output on models with inputs over 300MBH

<sup>2</sup> Thermal efficiency on models with inputs over 300MBH

<sup>3</sup> e.g. 6 & 7 indicates both 6 and 7 inch collar diameters (see installation manual)

<sup>4</sup> e.g. 1/2 & 3/4 indicates both 1/2 and 3/4 inch gas connections

<sup>5</sup> Weight for knock-down units








## MEGA-STOR® II (MS2)

### Stainless Steel - Indirect Water Heater

- Five sizes: 30-119 gallon
- Rugged design with coated steel jacket and heavy duty polymer top and bottom to resist cracks and abrasions (Available on sizes 30-75 only)
- Large diameter and smooth surface stainless steel coil maintains superior performance over the life of the tank
- Adjustable feet for uneven floors (Available on sizes 30-75 ONLY)

**CLICK HERE  
FOR MORE INFO**



AHRI Performance Ratings												
Model	First Hour Rating	Continuous Draw Rating	Standby Loss (°F/hr)	Minimum Boiler Output (MBH)	Boiler Water Through Coil		POTABLE VOLUME (GAL)	D (IN)	H (IN)	APPROX SHIPPING WEIGHT (LBS)		
	(Gal/hr)	(Gal/hr)			Min Flow (Gal/min)	Head Loss (ft w.c.)						
MS2-030	162	138	1.4	87	8.0	2.6	30.1	23-1/2	33-1/8	69		
MS2-040	192	162	1.1	101	8.0	2.8	37.9	23-1/2	39-3/8	82		
MS2-050	236	193	0.9	121	8.0	2.9	50.6	23-1/2	49-3/4	112		
MS2-075	307	238	1.0	150	8.0	4.5	74.0	23-1/2	68-3/4	146		
MS2-119	497	417	1.4	264	14.0	4.2	111.3	30-3/4	62-7/8	251		

## MEGA-STOR BUFFER TANK

- Available in 3 sizes (30, 50, 75)
- Rugged design with coated steel jacket and heavy-duty polymer top and bottom
- Tank cylinder made of 444 stainless steel
- Adjustable feet for uneven floors
- 1-1/2" system connections

**CLICK HERE  
FOR MORE INFO**



MODEL	VOLUME (GAL.)	DIMENSIONS IN INCHES		WEIGHT	
		HEIGHT	WIDTH	NET	FULL
MSB-030	31.4	33-1/8	23-1/2	71	333
MSB-050	52.6	49-3/4	23-1/2	82	520
MSB-075	76.3	68-3/4	23-1/2	115	751




# MAXI-THERM II (MT)

## Glass Lined - Indirect Water Heater

- Three sizes: 40, 50 and 120 gallons
- Porcelain enamel tank
- Porcelain enamel coated smooth coil surface

**CLICK HERE  
FOR MORE INFO**

AHRI Performance Ratings										
Model	First Hour Rating	Continuous Draw Rating	Standby Loss (°F/hr)	Minimum Boiler Output (MBH)	Boiler Water Through Coil		POTABLE VOLUME (GAL)	D (IN)	H (IN)	APPROX SHIPPING WEIGHT (LBS)
	(Gal/hr)	(Gal/hr)			Min Flow (Gal/min)	Head Loss (ft w.c.)				
MT040 GBR	205	180	1.1	120	13.7	1.5	37	22	41-1/8	172
MT050 GBR	210	180	0.9	120	13.7	1.5	43	22	46-1/4	180
MT120 GBC	400	325	0.4	220	14.0	5.0	107	28-1/4	62-1/2	415

Note: First hour ratings are based on the following conditions: 180 deg. F Boiler Supply, 58 deg. F cold water in, 135 deg. F domestic water out.



# OIL FURNACE SERIES

- Five styles available: Low Profile High Boy, Low Boy, Rear Flue, Low Boy Front Flue, Horizontal/Counterflow, Hi Boy
- Limited lifetime warranty on heat exchanger
- 5-year parts warranty

**CLICK HERE  
FOR MORE INFO**



STYLE	MODEL	BTU/H OUTPUT (1000'S)	AFUE%	Energy Star	MAX RECOMMENDED A/C	W (IN)	D (IN)	H (IN)	APPROX. SHIPPING WEIGHT (LBS)
LOW PROFILE HIGH BOY	VCSHB60-90ABP	60 / 72 / 90	85%	NO	4 TON	21	30	45	270
LOW PROFILE HIGH BOY	VCSHB60-90ABT	60 / 72 / 90	85%*	YES	4 TON	21	30	45	270
LOW BOY - FRONT	VCLBF68-112DBP	70 / 88 / 98 / 114	85%	NO	3 1/2 TON	22-1/4	47	41-1/2	300
LOW BOY - REAR	VCLBR68-112DBP	70 / 88 / 98 / 114	85%	NO	3 1/2 TON	22-1/4	47	41-1/2	300
HORIZONTAL / COUNTER FLOW	VCHC68-96CBP	70 / 88 / 98 / 114	85%	NO	3 1/2 TON	22-1/4	22-1/4	61-1/4	280
HI BOY	VCH8FA119P60B	101 / 119 / 132	85%	NO	5 TON	24-1/2	36-1/2	50-1/8	316

\*  ENERGY STAR® certified product

# ADVANCED FEATURES



## INTEGRATED BOILER CONTROL

Features temperature control, relay and ignition functions in a single module. Included LWCO and additional circulator output for a second heating zone or an indirect water heater like the Mega-Stor II.

**Standard on AWR & BWF**



## HYDROLEVEL 3250

**CLICK HERE  
FOR MORE INFO**

The Hydrolevel HydroStat 3250 control provides temperature limit and low water cutoff, while allowing for outdoor reset control with the addition of an Outdoor Sensor Kit.

**Standard on TWB & FWZ**



## TOUCH SCREEN

A factory preset control system featuring a touch screen display with plain language guidance makes for quick and easy setup.

**Standard on Phantom, Phantom-X, Raptor, Raptor-X & Phantom Combi**



## PHANTOM ADAPTIVE COMBUSTION

Adaptive combustion technology features

- Field convertible to LP- No conversion Kit required
- Simple start-up
- Rate based temperature reset- no outdoor sensor required

**Standard on Phantom II Combi and Heat Only boilers**

# ACCESSORIES

## STEAM NEAR BOILER PIPING KITS



The near boiler piping kit will assist in delivering “dry” steam to the heating system, reduce short cycling, eliminate water hammering and protect against system flooding. Kit includes all components required to complete the near boiler piping as recommended in the installation manual.

Available on BSI, FSZ & KSZ

[CLICK HERE  
FOR MORE INFO](#)

## CONDENSING ACCESSORIES



### CPVC/PVC Vent Kits

Leg Kit Raptor

EZ Base Phantom/Phantom Combi

EZ Loop Low Loss Header

Phantom - Residential

[CLICK HERE  
FOR MORE INFO](#)



- High-grade materials and “smart” controls for maximum efficiency and cost savings
- Safe, reliable and durable products for years of exceptional performance
- Expertly engineered, inspected and certified to meet the most rigorous standards for quality, safety and efficiency
- Delivered fully assembled and tested, easy to install and service
- A wide range of venting options and boiler sizes to fit the needs of any home or business
- Backed by superior warranties, with friendly and experienced technicians ready to answer questions and provide support

At Velocity Boiler Works our products are built to the highest standards, earning one or more of the following marks:



Quality  
Value &  
Service