



D E S I G N E D T O L E A D

BWC Series

**High Efficiency Gas-Fired Hot Water
Direct Vent Condensing Boilers**

INSTALLATION INSTRUCTIONS

These instructions must be affixed on or adjacent to the boiler.

Models:

- **BWC070**
- **BWC090**
- **BWC120**
- **BWC151**



WARNING: Improper installation, adjustment, alteration, service or maintenance can cause property damage, injury, or loss of life. For assistance or additional information, consult a qualified installer, service agency or the gas supplier. This boiler requires a special venting system. Read these instructions carefully before installing.

**Equipped with Honeywell
MCBA Control**

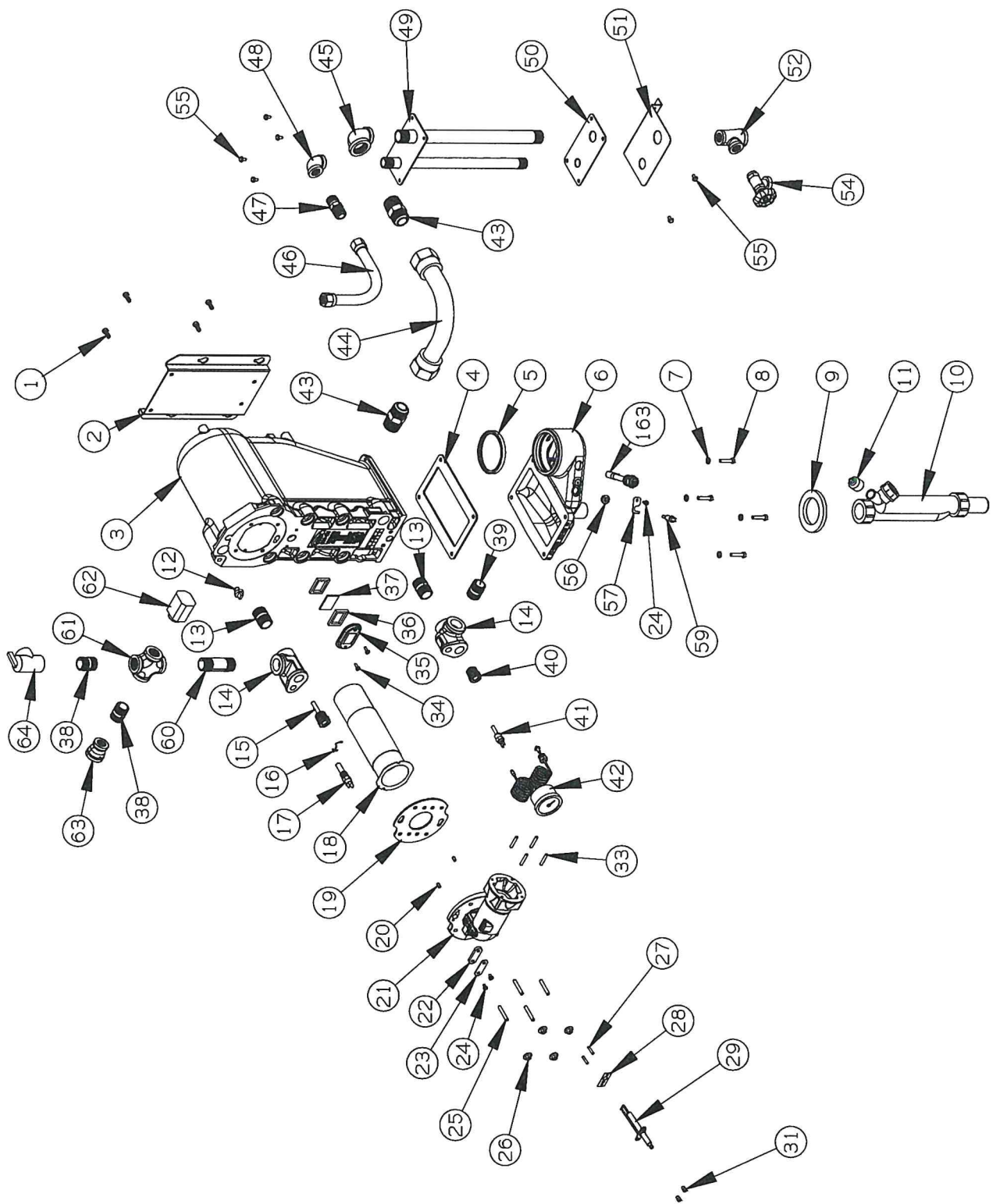


Manufacturer of Hydronic Heating Products
P.O. Box 14818 3633 I. Street
Philadelphia, PA 19134
www.crownboiler.com

XV Parts

The following parts may be obtained from any Crown distributor. To find the closest Crown distributor, consult the area Crown representative or the factory at:

Crown Boiler Co.
Customer Service
P.O. Box 14818
Philadelphia, PA 19134
www.crownboiler.com

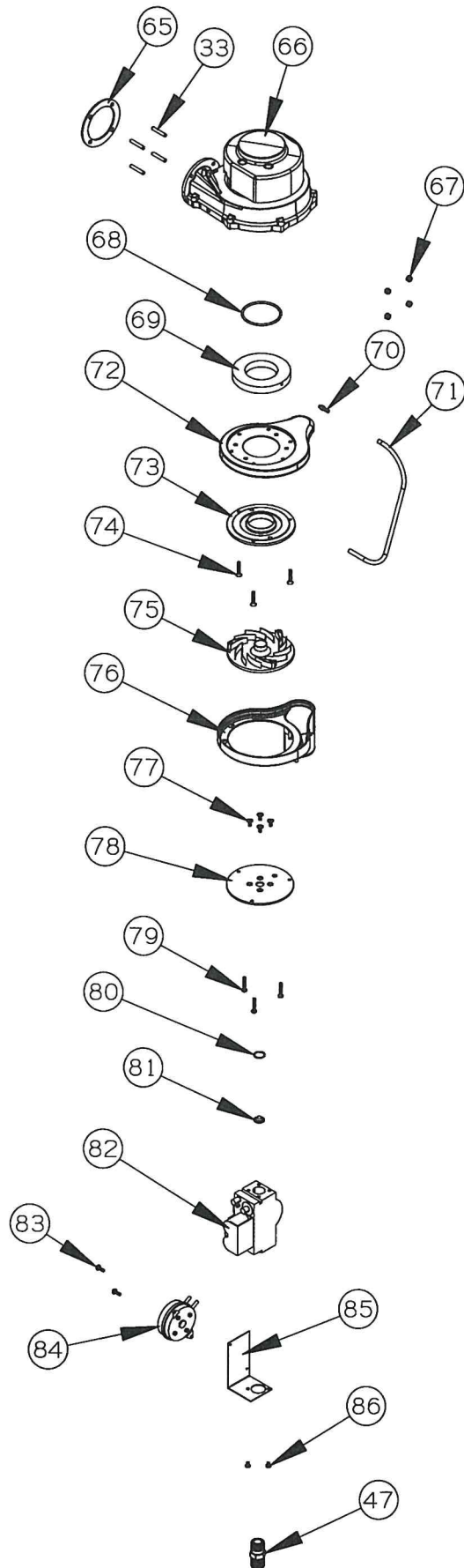


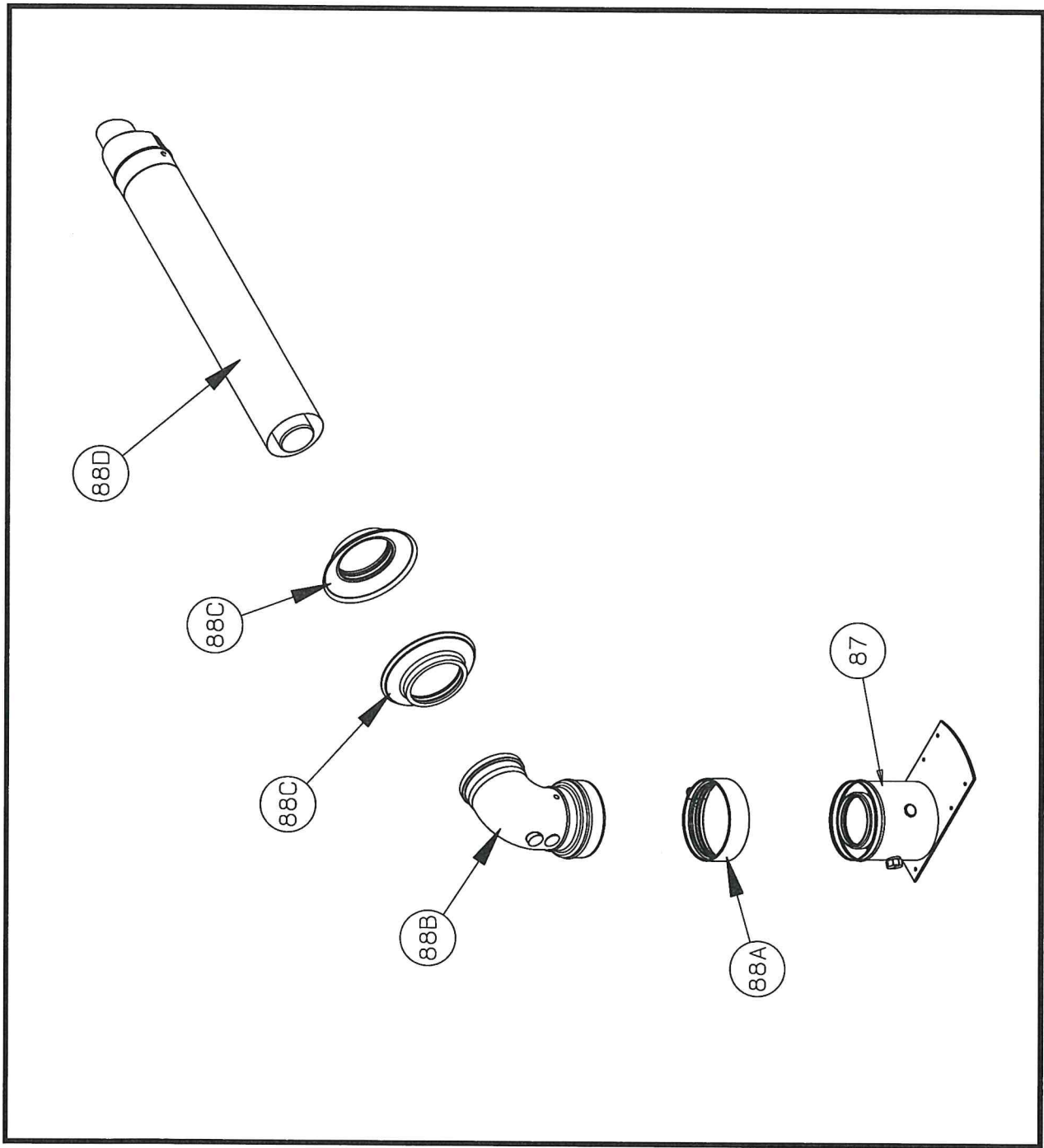
PARTS LIST

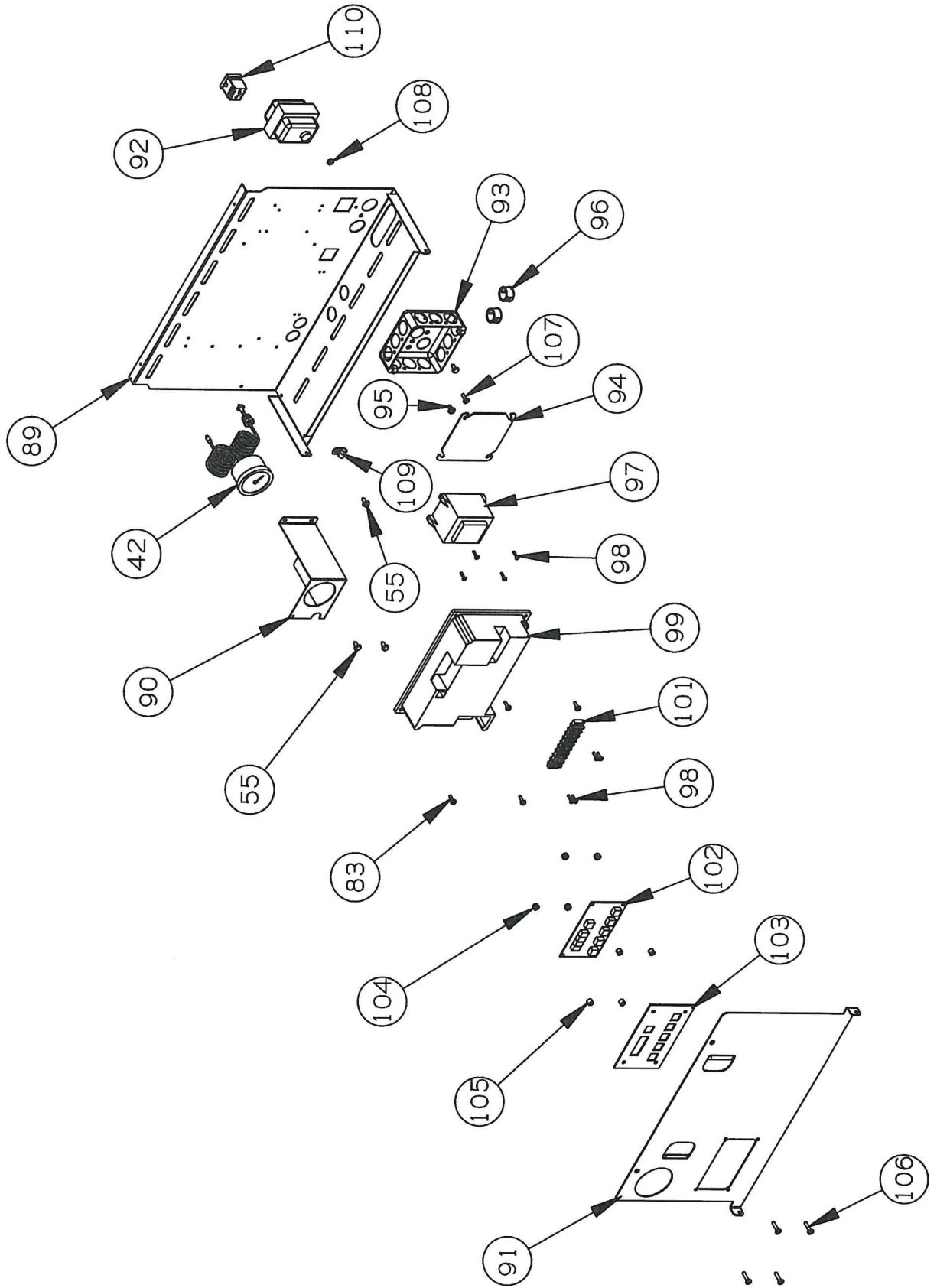
Key	DESCRIPTION	BWC070		BWC090		BWC120		BWC151	
		Part #	QTY	Part #	QTY	Part #	QTY	Part #	QTY
*	Taco 008	950165	1						
*	Taco 0014			950160	1	950160	1	950160	1
*	Gas Cock	950615	1	950615	1	950615	1	950615	1
*	M4 x 30mm Machine Screw (for gas valve harness)	3507342	1	3507342	1	3507342	1	3507342	1
*	Outdoor Sensor	240022	1	240022	1	240022	1	240022	1
*	4A Fuse	960004	1	960004	1	960004	1	960004	1
*	5A Fuse	960005	1	960005	1	960005	1	960005	1
*	Nylon Wire Tie Shoe	960016	9	960016	9	960016	9	960016	9
*	Graphic Overlay Membrane	980030	1	980030	1	980030	1	980030	1
*	X5 Plug	9602416	1	9602416	1	9602416	1	9602416	1
1	M6 x 16mm Serrated Flange Head Hex Screw	900722	4	900722	4	900722	4	900722	4
2	AM Heat Exchanger Bracket	230413	1	230413	1	230414	1	230414	1
3	Heat Exchanger	230013	1	230013	1	230014	1	230015	1
4	Sump Gasket	230713	1	230713	1	230714	1	230716	1
5	80mm Vent Gasket	240039	1	240039	1	240039	1	240039	1
6	Sump	230703	1	230703	1	230704	1	230706A	1
7	M6 Washer	230906	4	230906	4	230906	4	230906	4
8	M6 x 30mm Cap Screw	230935	4	230935	4	230935	4	230935	8
9	Condensate Trap Gasket	240005	1	240005	1	240005	1	240005	1
10	Condensate Trap, 150mm	240955	1	240955	1	240955	1	240955	1
11	Red Vinyl Cap	240990	1	240990	1	240990	1	240990	1
12	Supply Temperature Sensor	230122	1	230122	1	230122	1	230122	1
13	3/4 BSP x 1 1/2" Steel Nipple	950140	2	950140	2	950140	2		
13	1" BSP x 1 1/2" Steel Nipple							950141	2
14	Supply/Return Fitting	230095	2	230095	2	230095	2	230096	2
15	Gauge Sensor Well	230102	1	230102	1	230102	1	230102	1
16	Gauge Cap Tube Clamp	230103	1	230103	1	230103	1	230103	1
17	High Limit	960124	1	960124	1	960124	1	960124	1
18	Burner	230035	1	230035	1	230045	1	230046	1
19	Burner Hood Gasket	230032	1	230032	1	230032	1	230032	1
20	5 x 8 Grooved Pin	230945	2	230945	2	230945	2	230945	2
21	Burner hood, AM	230030	1	230030	1	230030	1	230030	1
22	Burner Hood Cover Plate Gasket	230050	1	230050	1	230050	1	230050	1
23	Burner Hood Cover Plate	230051	1	230051	1	230051	1	230051	1
24	M4 X 8 Machine Screw	230923	3	230923	3	230923	3	230923	3
25	M6 x 40mm Set Screw	230940	4	230940	4	230940	4	230940	4
26	M6 Nut With Captive Washer	240905	4	240905	4	240905	4	240905	4
27	M4 x 20mm Set Screw	240920	2	240920	2	240920	2	240920	2
28	Electrode Gasket	240011	1	240011	1	240011	1	240011	1
29	Electrode	240010	1	240010	1	240010	1	240010	1
31	M4 Shoulder Nut	240921	2	240921	2	240921	2	240921	2
33	M5 x 30mm Set Screw	230930	4	230930	4	230930	4	230930	4
34	M4 x 12mm PH Machine Screw	240925	2	240925	2	240925	2	240925	2
35	Sight Glass Holder	240951	1	240951	1	240951	1	240951	1
36	Sight Glass Gasket	240952	2	240952	2	240952	2	240952	2
37	Sight Glass	240950	1	240950	1	240950	1	240950	1
38	3/4 x Cl Blk Nipple	95-105	2	95-105	2	95-105	2	95-105	1
39	3/4 x Cl. Brass Nipple	950135	1	950135	1	950135	1		
40	Gauge Pressure Fitting	230101	1	230101	1	230101	1	230101	1
41	Return Temperature Sensor	230125	1	230125	1	230125	1	230125	1
42	Gauge	230100	1	230100	1	230100	1	230100	1
43	1" ID x 1" NPT CSST Adaptor	230710	2	230710	2	230710	2	230710	2
44	1" Gray Coated CSST, Nut by Nut	230700	1	230700	1	230700	1	230709	1
45	3/4 x 1 Blk Reducing Elbow	950116	1	950116	1	950116	1		
45	1" Blk Elbow							950190	1
46	1/2" Yellow Coated CSST, Nut by Nut	230705	1	230705	1	230705	1	230707	1
47	5/8" OD x 1/2" MPT CSST Adaptor	230715	2	230715	2	230715	2	230715	2

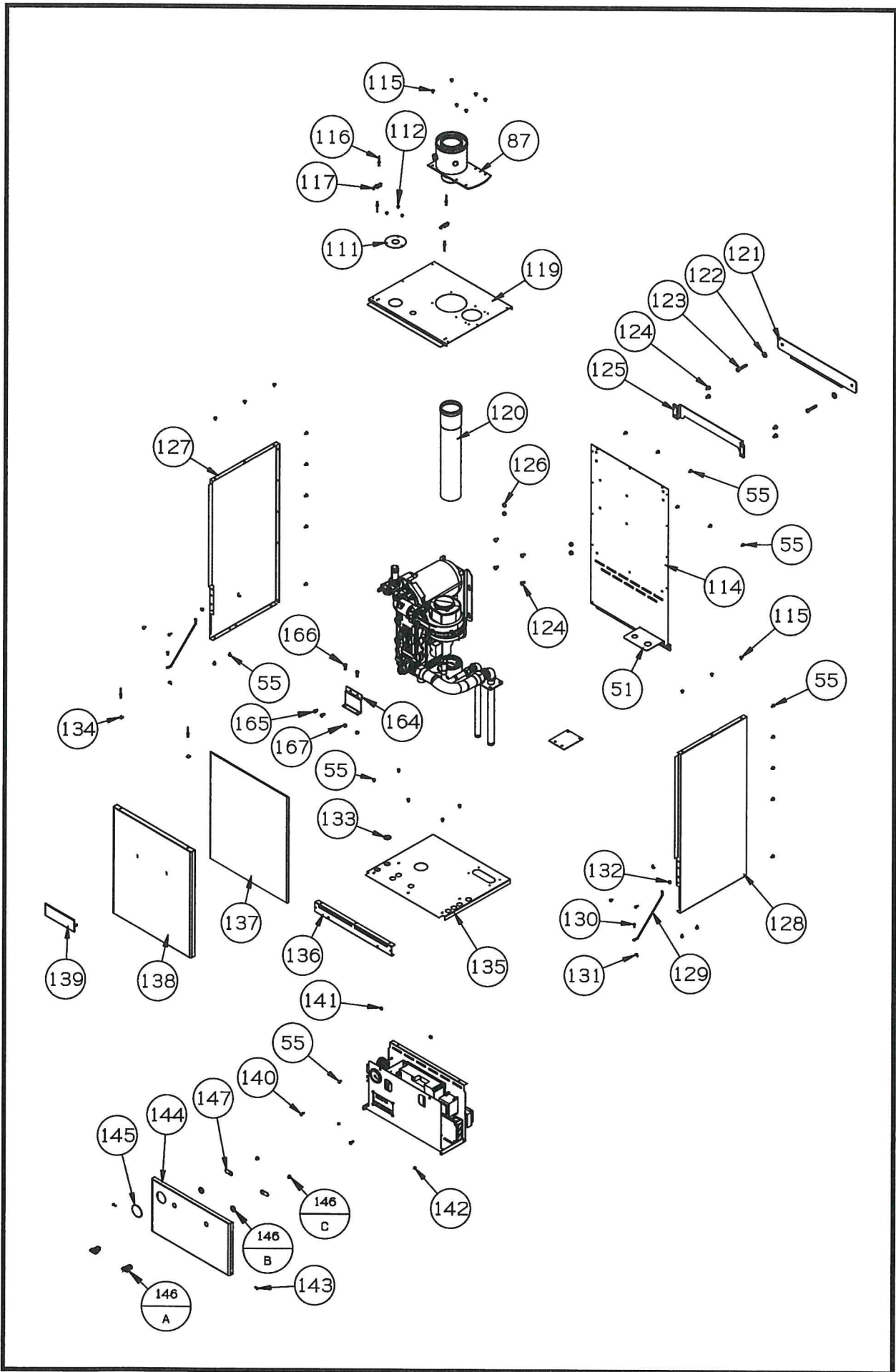
PARTS LIST

Key	DESCRIPTION	BWC070		BWC090		BWC120		BWC151	
		Part #	QTY	Part #	QTY	Part #	QTY	Part #	QTY
48	1/2" Blk Elbow	950049	1	950049	1	950049	1	950049	1
49	Flanged Nipple Assy	950700	1	950700	1	950700	1	950701	1
50	Flanged Nipple Gasket	230401	1	230401	1	230401	1	230405	1
51	Pipe Support Bracket	230470	1	230470	1	230470	1	230480	1
52	3/4 x 1 x 3/4 Reducing Black Tee	950118	1	950118	1	950118	1		
52	1 x 1 x 3/4 Black Tee							950212	1
54	3/4 Boiler Drain	95-041	1	95-041	1	95-041	1	95-041	1
55	#10 x 1/2 sheet metal screw	90-212	36	90-212	36	90-212	36	90-212	36
56	Fluegas Sensor Grommet	230056	1	230056	1	230056	1	230056	1
57	Fluegas NTC Mounting Plate	230055	1	230055	1	230055	1	230055	1
59	Fluegas Temperature Sensor	230120	1	230120	1	230120	1	230120	1
60	3/4 x 3" Nipple	95-027	1	95-027	1	95-027	1		
60	1 x 3" Nipple							950104	1
61	3/4 Black Cross	950130	1	950130	1	950130	1		
61	1" Black Cross							950105	1
62	Hydrolevel #1100 LWCO	450600	1	450600	1	450600	1	450600	1
63	3/4 x 1 Black Reducing Coupling	950120	1	950120	1	950120	1		
64	30 psi Relief Valve	95-040	1	95-040	1	95-040	1	95-040	1
65	Blower Gasket	240001	1	240001	1	240001	1	240001	1
66	Blower, RG128/1300-3612	230002	1	230002	1	230002	1	230002	1
67	M5 Locknut	900003	4	900003	4	900003	4	900003	4
68	3 x 63mm Buna-N O-Ring	230003	1	230003	1	230003	1	230003	1
69	Fan Inlet block	230150	1	230150	1	230150	1	230150	1
70	10-32 x 1/8 ID Hose Barb	90-222	1	90-222	1	90-222	1	90-222	1
71	1/8 ID Silicone Tubing (12")	14-008	1	14-008	1	14-008	1	14-008	1
72	Dungs Air Inlet Adaptor Part 2 (male)	3507345	1	3507345	1	3507345	1	3507345	1
73	42.5mm Short Fan Adaptor Plate	3507346	1	3507346	1	3507346	1	3507346	1
74	M4 x 25mm Flat Head Machine screw	900010	3	900010	3	900010	3	900010	3
75	5mm Swirlplate (Blue)	3507337	1	3507337	1				
75	9mm Swirlplate (Red)					3507347	1		
75	12mm Swirlplate (Gray)							3507336	1
76	Dungs Air Inlet Adaptor Part 1 (female)	3507344	1	3507344	1	3507344	1	3507344	1
77	M4 x 10mm FH Machine Screw	900006	4	900006	4	900006	4	900006	4
78	Injector Plate	3507348	1	3507348	1	3507348	1	3507348	1
79	M4 x 25mm Positdrive Hd Screws	900734	3	900734	3	900734	3	900734	3
80	1.5 x 17mm O-Ring	3507349	1	3507349	1	3507349	1	3507349	1
81	7.0mm Orifice					3507339	1	3507339	1
81	5.0mm Orifice	3507338	1	3507338	1				
82	GB-WND 055 Head On Gas Valve	3507340	1	3507340	1	3507340	1	3507340	1
83	6-32 x 1/2 HWH type F Self Tapping Screw	900713	6	900713	6	900713	6	900713	6
84	Pressure Switch	230009	1	230009	1	230009	1	230009	1
85	Pressure Switch Bracket	230475	1	230475	1	230475	1	230475	1
86	M4 x 6mm Round Head Machine Screw	900011	2	900011	2	900011	2	900011	2
87	Concentric Vent Collar	230501	1	230501	1	230501	1	230501	1
88	Vent Kit	230500	1	230500	1	230500	1	230580	1
89	Control Box	230331	1	230331	1	230331	1	230331	1
90	Gauge Bracket	950705	1	950705	1	950705	1	950705	1
91	Control Cover	230330	1	230330	1	230330	1	230330	1
92	AT140 Transformer	35-2000	1	35-2000	1	35-2000	1	35-2000	1
93	4 x 4 J-Box	96-055	1	96-055	1	96-055	1	96-055	1
94	4 x 4 J-Box Cover	96-054	1	96-054	1	96-054	1	96-054	1
95	10-32 x 3/8" Ground Screw	146-95-301	1	146-95-301	1	146-95-301	1	146-95-301	1
96	Shutter Bushing	96-050	2	96-050	2	96-050	2	96-050	2
97	AT250 Transformer	3502600	1	3502600	1	3502600	1	3502600	1
98	4-40 x 1/2 HWH type F Self Tapping Screw	900470	8	900470	8	900470	8	900470	8
99	MCBA (Programmed)	35223070NO	1	3523120	1	3523120	1	3523120	1
101	Terminal Strip	960095	1	960095	1	960095	1	960095	1
102	DISP4D	3501600	1	3501600	1	3501600	1	3501600	1
103	Graphic Overlay Mounting Plate	240390	1	240390	1	240390	1	240390	1
104	8-32 Lock Nut	900706	4	900706	4	900706	4	900706	4





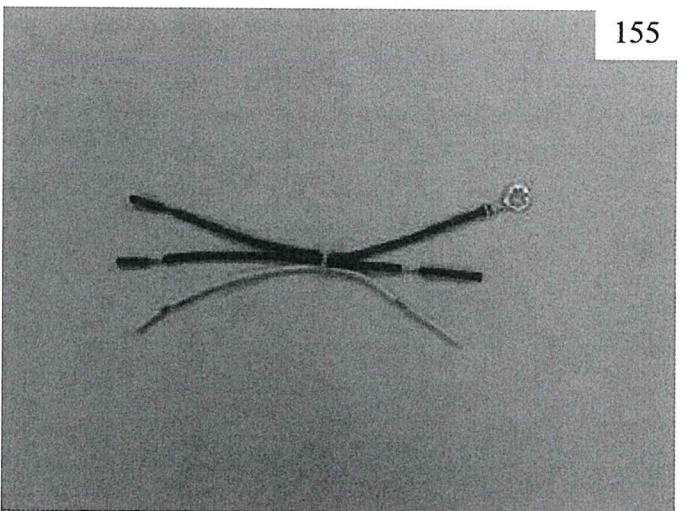
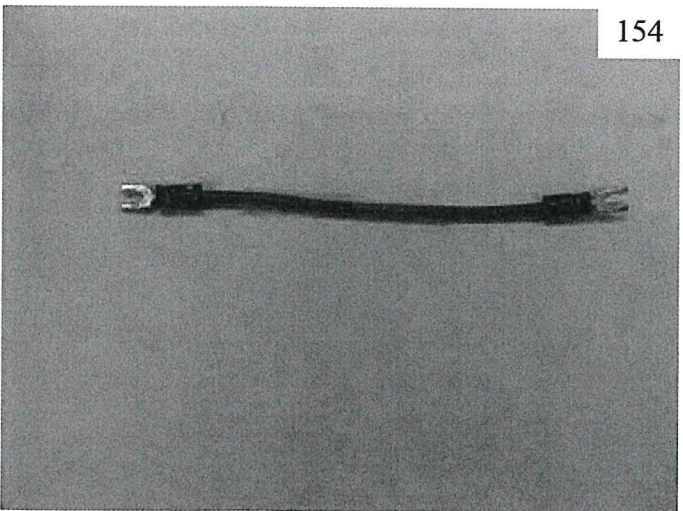
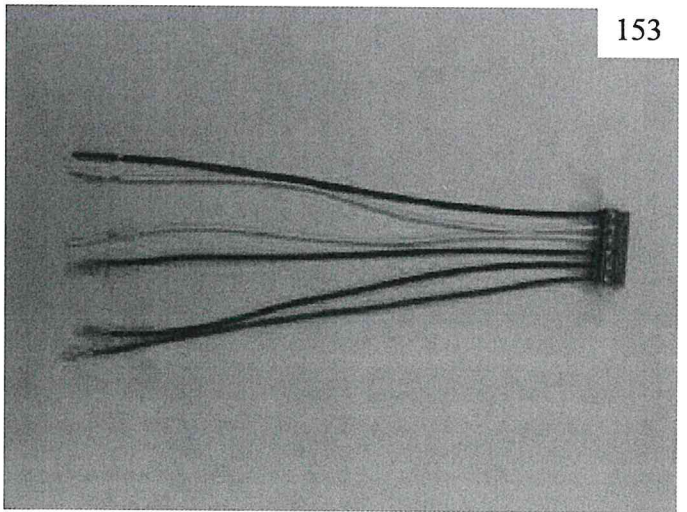
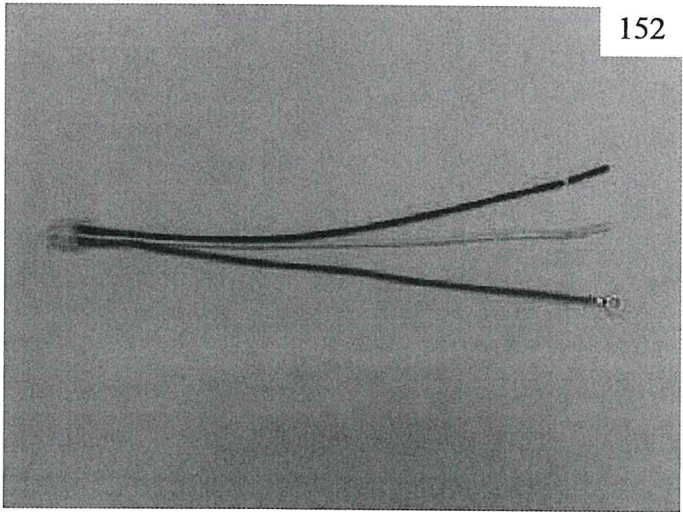
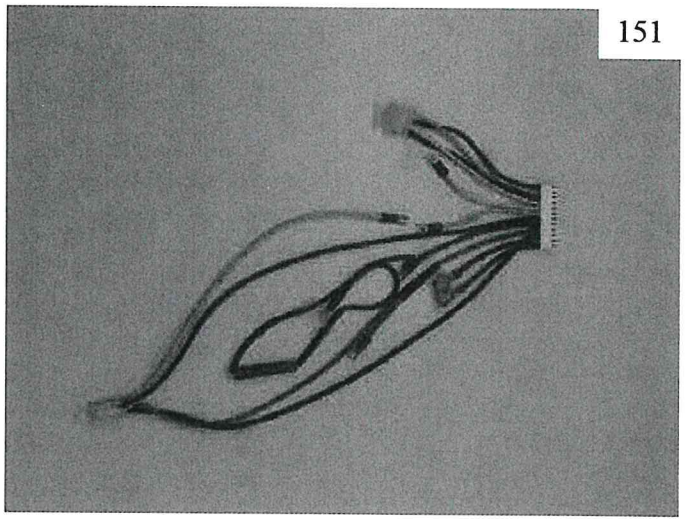
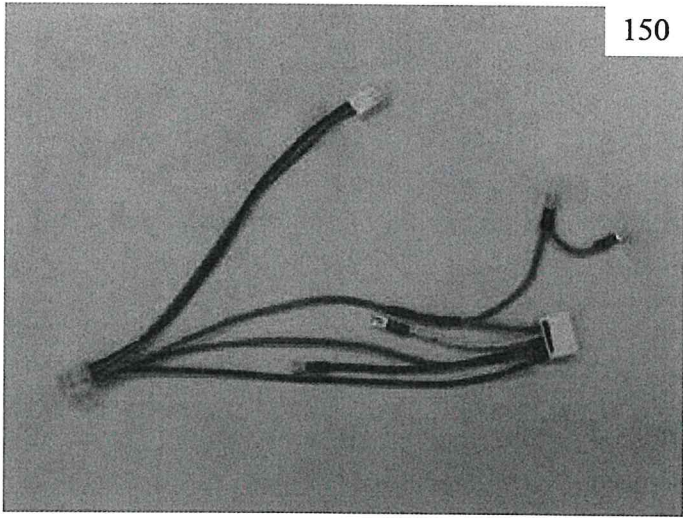


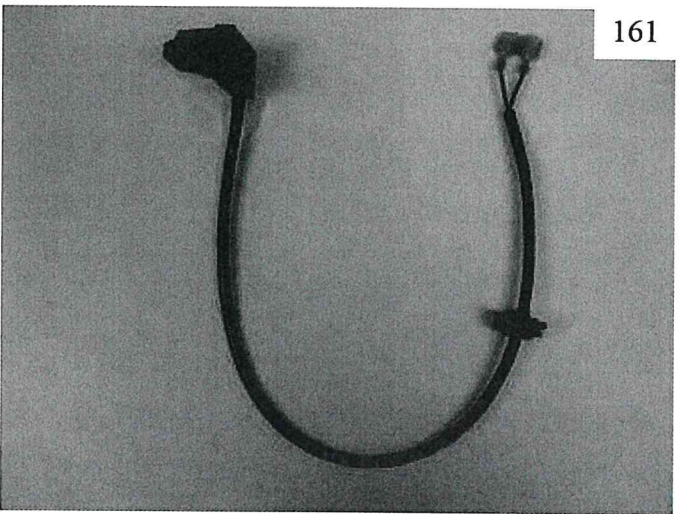
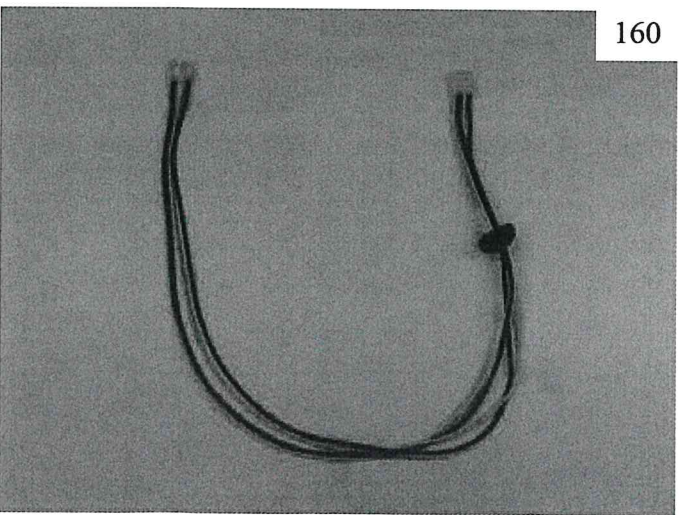
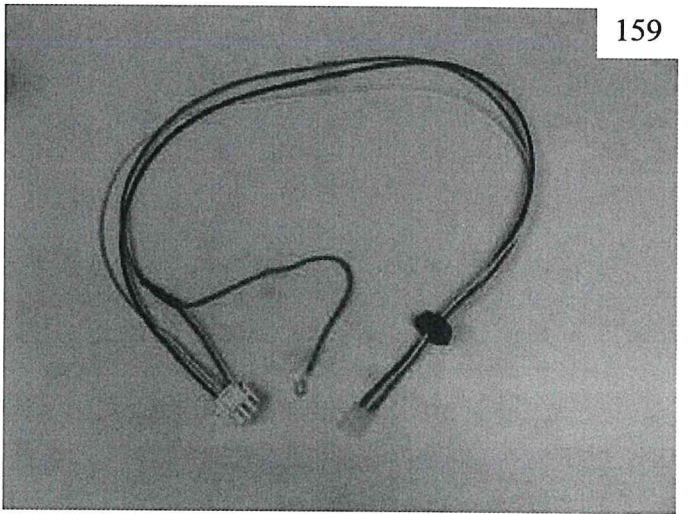
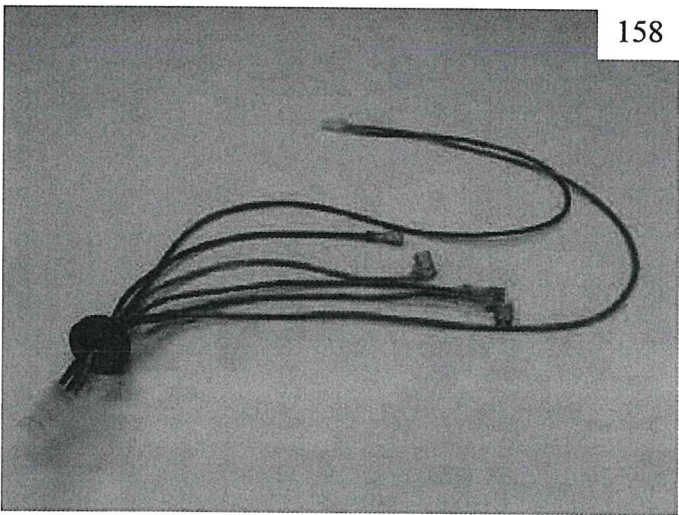
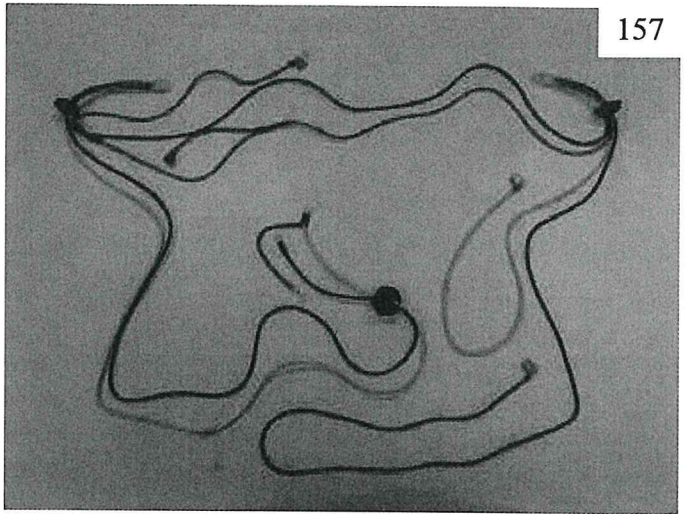
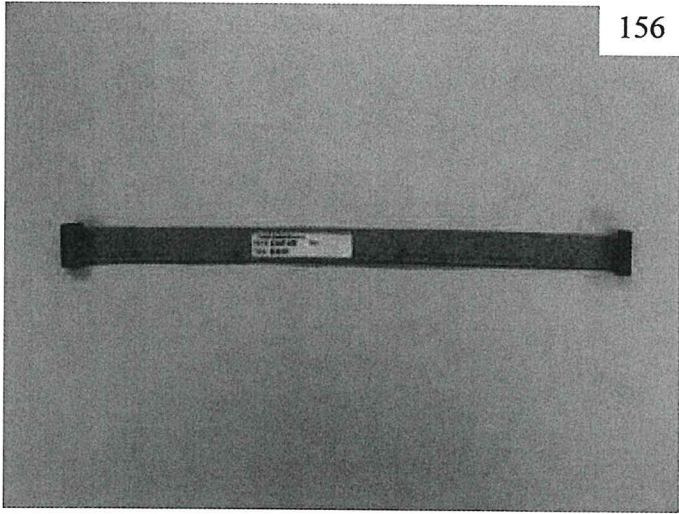


PARTS LIST

Key	DESCRIPTION	BWC070		BWC090		BWC120		BWC151	
		Part #	QTY	Part #	QTY	Part #	QTY	Part #	QTY
105	Zinc Plated Brass Spacer	960054	4	960054	4	960054	4	960054	4
106	8-32 x 3/4 Round Head Machine Screw	900725	4	900725	4	900725	4	900725	4
107	8-32 x 1/2" PH Machine Screw	90-052	1	90-052	1	90-052	1	90-052	1
108	8-32 Hex Nut	90-053	1	90-053	1	90-053	1	90-053	1
109	Resistor Clamp	960090	1	960090	1	960090	1	960090	1
110	Condensate Pump Receptacle	960023	1	960023	1	960023	1	960023	1
111	Escutcheon Plate	230380	1	230380	1	230380	1	230385	1
112	#8 Self Drilling Screw	900055	3	900055	3	900055	3	900055	3
114	Rear Panel	230303	1	230303	1	230303	1	230303	1
115	#10 x 1/2 Truss Hd Screws	900120	12	900120	12	900120	12	900120	12
116	1/8" Aluminum Pop Rivet	90-068	8	90-068	8	90-068	8	90-068	8
117	Draw Latch	230202	2	230202	2	230202	2	230202	2
119	Top Panel	230323	1	230323	1	230323	1	230325	1
120	Vent Stub	230502	1	230502	1	230502	1	230502	1
121	Wall Hook	230410	1	230410	1	230410	1	230410	1
122	5/16" Flat Washer	900102	2	900102	2	900102	2	900102	2
123	5/16" x 2" Lag Screw	900726	2	900726	2	900726	2	900726	2
124	1/4-20 x 1/2 Phillips Pan Hd with Ext Washer	900720	8	900720	8	900720	8	900720	8
125	Boiler Hanging Bracket	230435	1	230435	1	230435	1	230435	1
126	1/4-20 Nylon Insert Lock Nut	900721	4	900721	4	900721	4	900721	4
127	LH Side Panel	230301	1	230301	1	230301	1	2303015	1
128	RH Side Panel	230300	1	230300	1	230300	1	2303005	1
129	8" Long Bead Chain Lanyard	230210	2	230210	2	230210	2	230210	2
130	6-32 x 1/2 HWH type F Self Tapping Screw	900713	4	900713	4	900713	4	900713	4
131	6-32 Wing Nut	900724	4	900724	4	900724	4	900724	4
132	Rubber Bumper	230905	2	230905	2	230905	2	230905	2
133	Pinhole Grommet	10-026	2	10-026	2	10-026	2	10-026	2
134	Draw Keeper	230204	2	230204	2	230204	2	230204	2
135	Bottom Panel	230343	1	230343	1	230343	1	230345	1
136	Bottom Pan Support Bracket	230395	1	230395	1	230395	1	230395	1
137	AM Door Gasket	230400	1	230400	1	230400	1	230400	1
138	Upper Front Jacket Panel	230353	1	230353	1	230353	1	230353	1
139	Crown Aluminum Nameplate	98-004	1	98-004	1	98-004	1	98-004	1
140	10-32 x 1/2 Machine Screw	90-058	2	90-058	2	90-058	2	90-058	2
141	10-32 Screw Retainer	900727	2	900727	2	900727	2	900727	2
142	Nylon Spacer, #10 x 0.125	230212	2	230212	2	230212	2	230212	2
143	3/16 x 1/2 Slit Pin	230200	2	230200	2	230200	2	230200	2
144	Lower Front Jacket Panel	230363	1	230363	1	230363	1	230363	1
145	Heyco 2" Window	900723	1	900723	1	900723	1	900723	1
146	Latch CM Cam	230206	2	230206	2	230206	2	230206	2
147	Straight Cam	230208	2	230208	2	230208	2	230208	2
150	AM X3/X4 Harness	9602306	1	9602306	1	9602306	1	9602306	1
151	AM X2 Harness	9602307	1	9602307	1	9602307	1	9602307	1
152	Line Voltage Blower Harness	9602309	1	9602309	1	9602309	1	9602309	1
153	AM MCBA X1 Harness	9602310	1	9602310	1	9602310	1	9602310	1
154	Violet Jumper Wire	9602412	1	9602412	1	9602412	1	9602412	1
155	120VAC Pigtail Harness	9602407	1	9602407	1	9602407	1	9602407	1
156	AM Display Harness	9602308	1	9602308	1	9602308	1	9602308	1
157	AM Limit Harness	9602301	1	9602301	1	9602301	1	9602350	1
158	AM Sensor Harness	9602302	1	9602302	1	9602302	1	9602302	1
159	AM Blower Power Harness (Inner)	9602303	1	9602303	1	9602303	1	9602303	1
160	AM Tacho Harness	9602304	1	9602304	1	9602304	1	9602304	1
161	Dungs Gas Valve Harness	9602305	1	9602305	1	9602305	1	9602305	1
162	Igniton Cable	9602311	1	9602311	1	9602311	1	9602311	1
163	Float Switch							240060	1
164	Heat Exchanger Support Bracket							230420	1
165	M6 x 12 Machine Screw							900015	2
166	1/4-20 x 3/4 Cap Screw							90-213	2
167	1/4-20 Nut							90-202	2

* NOT SHOWN





162

