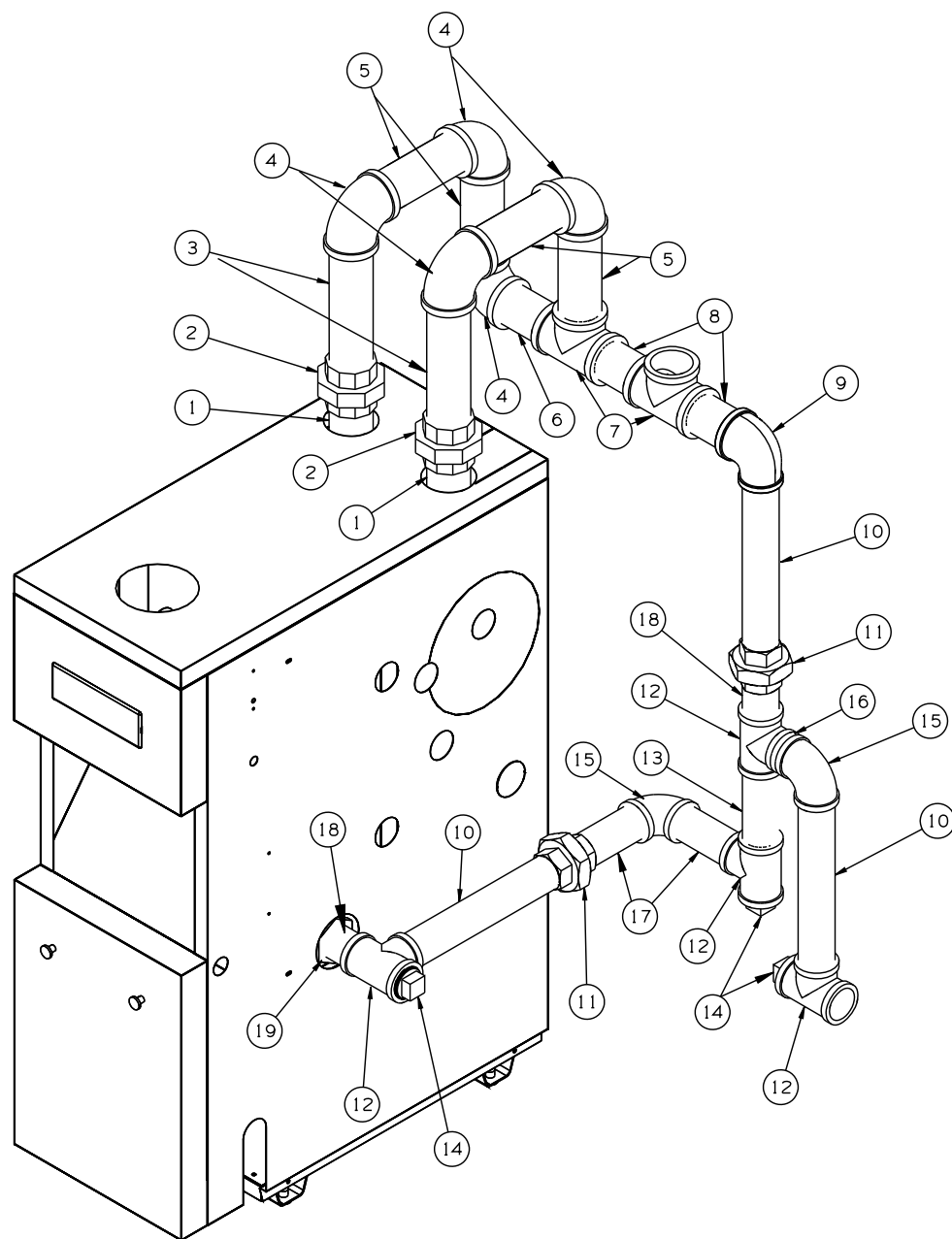


# DUAL RISER, DROP HEADER FOR BOILER MODELS:

3-6 SECTION, GAS-STEAM BOILERS

KIT PN 850105U



Number	Quantity In Kit	Description
1	0 (Note 1)	2" x 8" Pipe Nipple
2	2	2" Union
3	2	2" x 9" Pipe Nipple
4	5	2" 90° Elbow
5	4	2" x 7" Pipe Nipple
6 (3 Sec.)	1	2" x 4-1/2" Pipe Nipple
6 (4 Sec.)	1	2" x 7-3/4" Pipe Nipple
6 (5 Sec.)	1	2" x 11" Pipe Nipple
6 (6 Sec.)	1	2" x 14-1/4" Pipe Nipple
7	2	2" Tee
8	2	2" x 4" Pipe Nipple
9	1	2" x 1-1/2" 90° Reducing Elbow
10	3	1-1/2" x 12" Pipe Nipple
11	2	1-1/2" Union
12	4	1-1/2" Tee
13	1	1-1/2" x 6" Pipe Nipple (Note 2)
14	3	1-1/2" Plug
15	2	1-1/2" 90° Elbow
16	1	1-1/2" Close Nipple
17	2	1-1/2" x 5-1/4" Nipple (Note 2)
18	2	1-1/2" x 3" Nipple
19	1	2" x 1-1/2" Hex Bushing

NOTES: 1. 2" X 8" NIPPLES SHOWN SHIP WITH BOILER.  
 2. DUE TO VARIATION IN MAKE UP DIMENSIONS,  
 LENGTH OF THESE NIPPLES MAY NEED TO BE  
 ADJUSTED.  
 3. CONSULT INSTALLATION MANUAL FOR  
 ADDITIONAL INFORMATION ON PIPING.